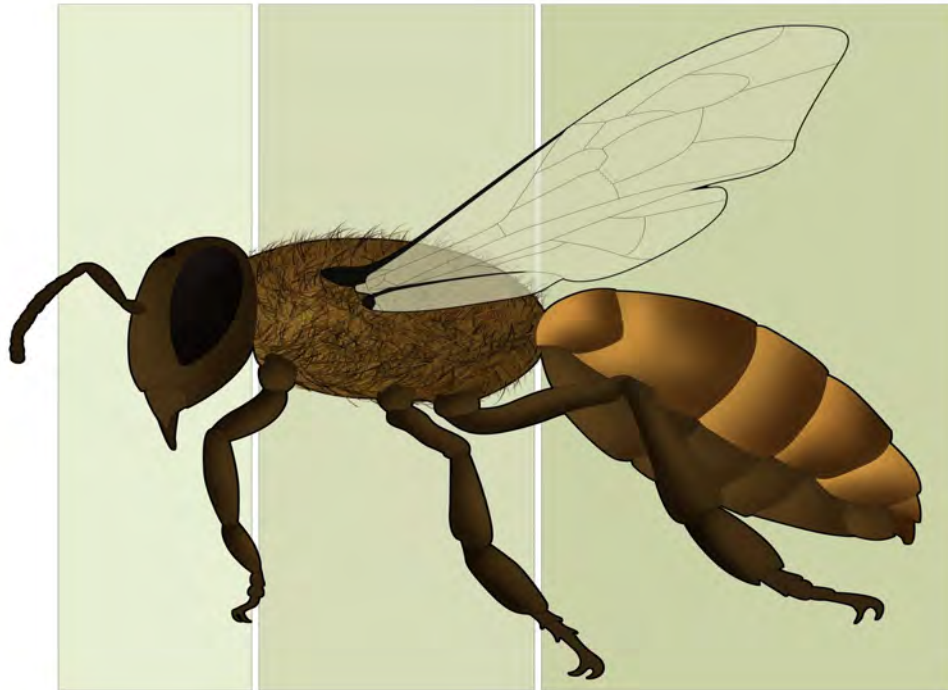
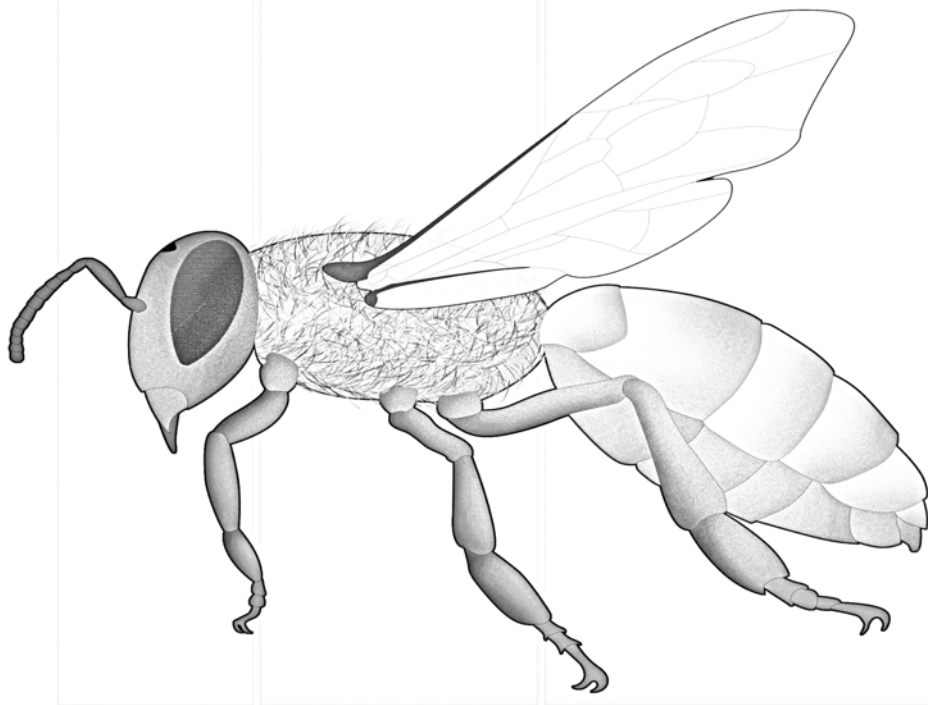




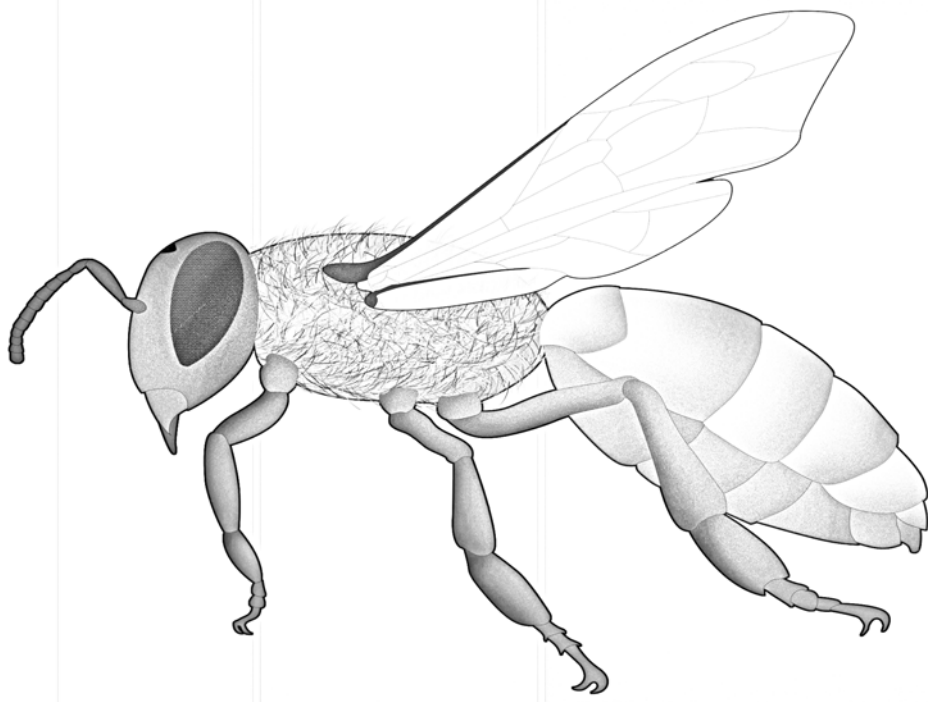
abeja



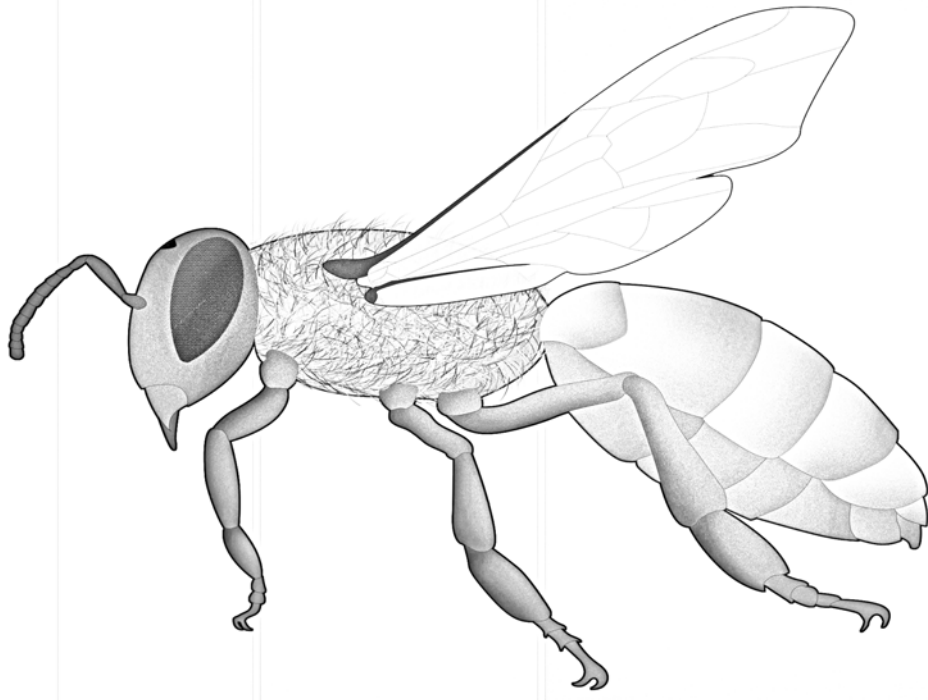
abeja



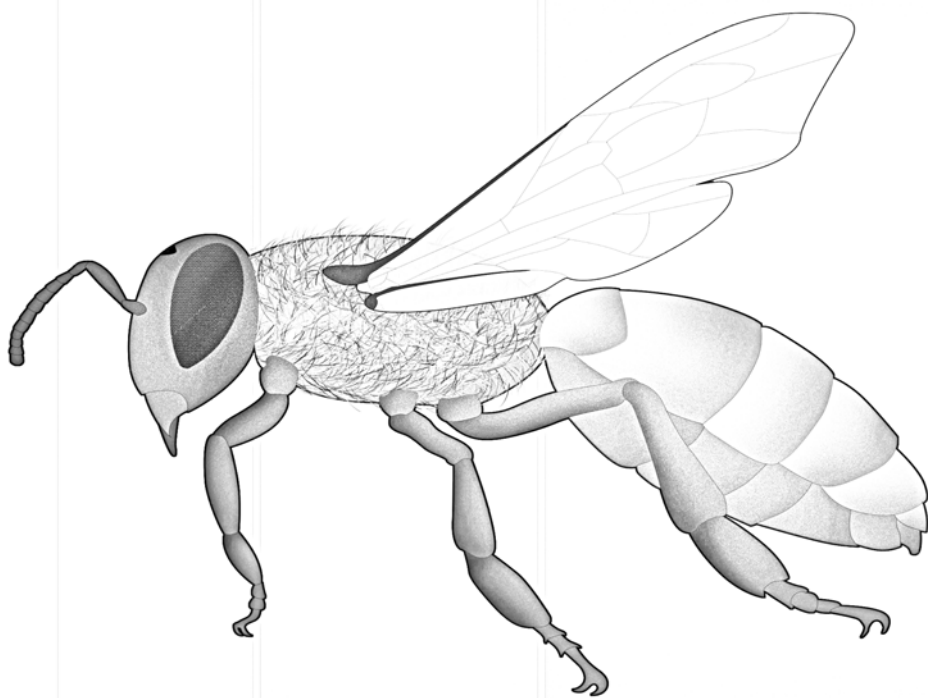
abeja



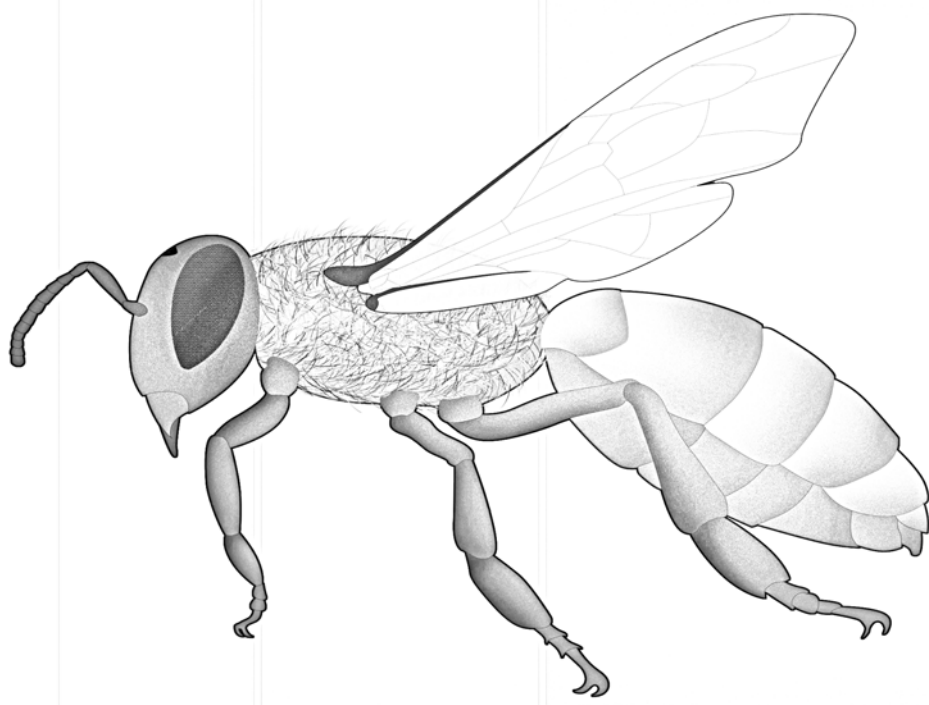
cabeza



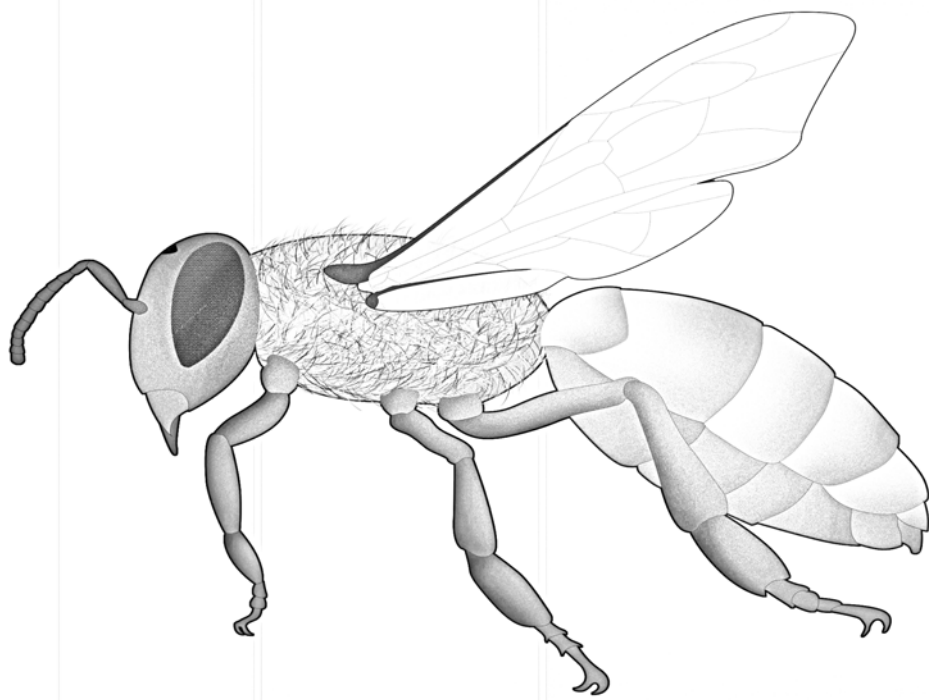
tórax



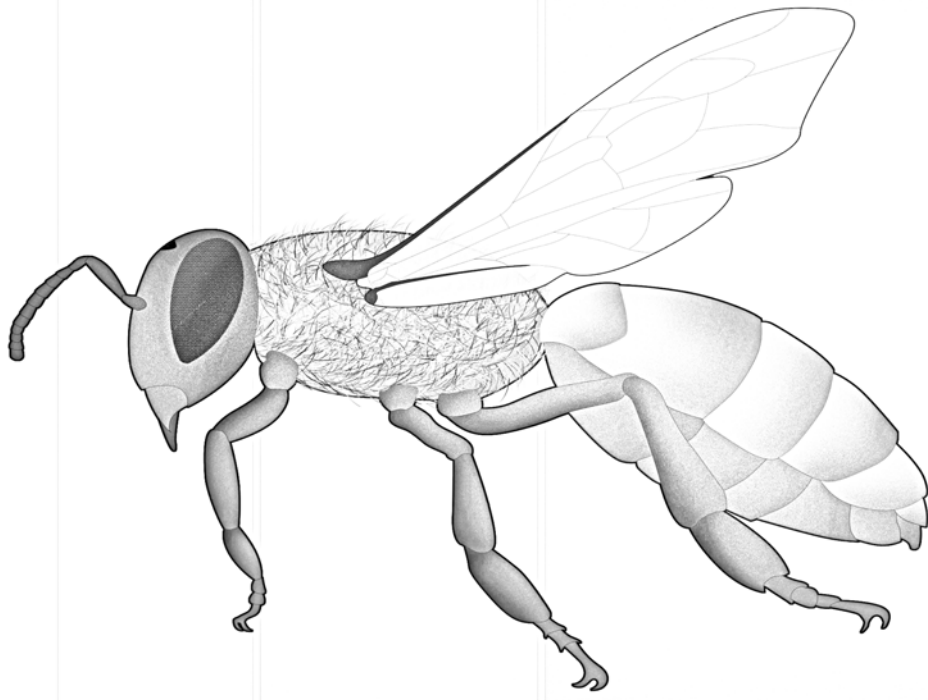
abdomen



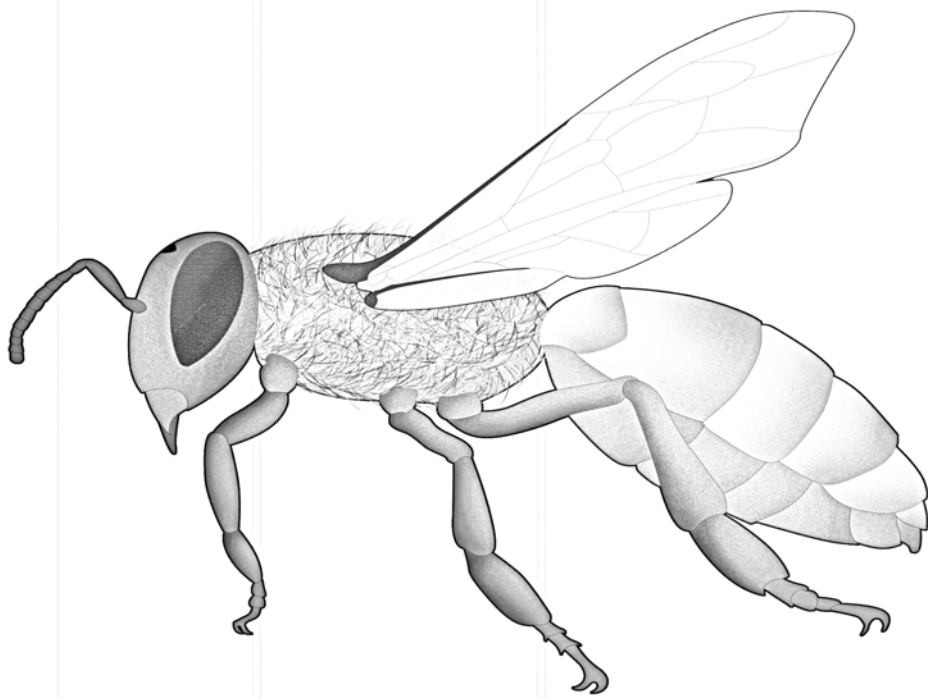
antenas



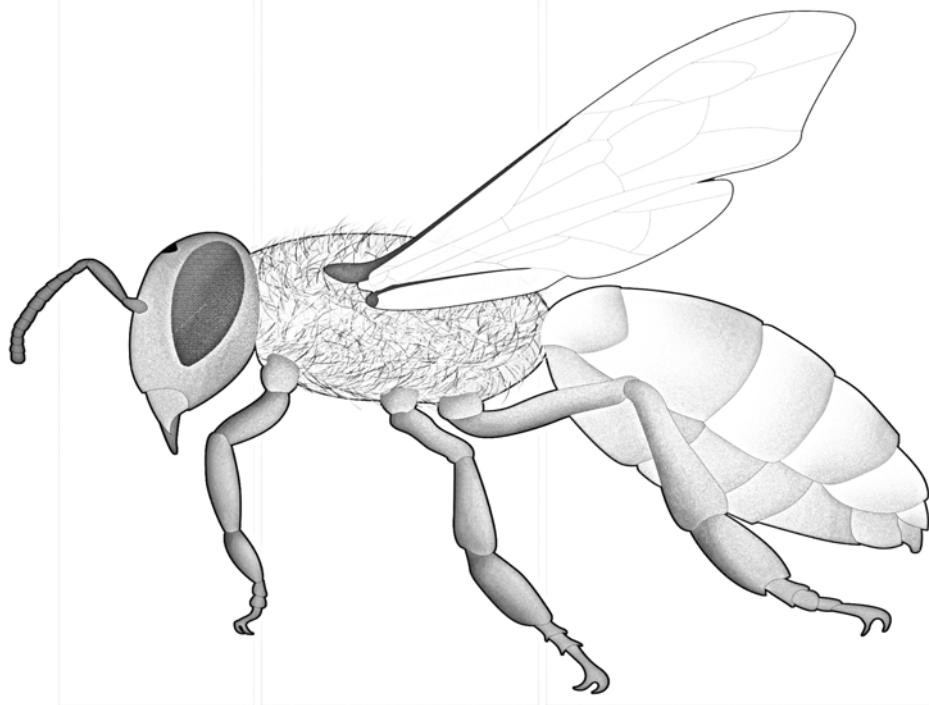
ojo compuesto



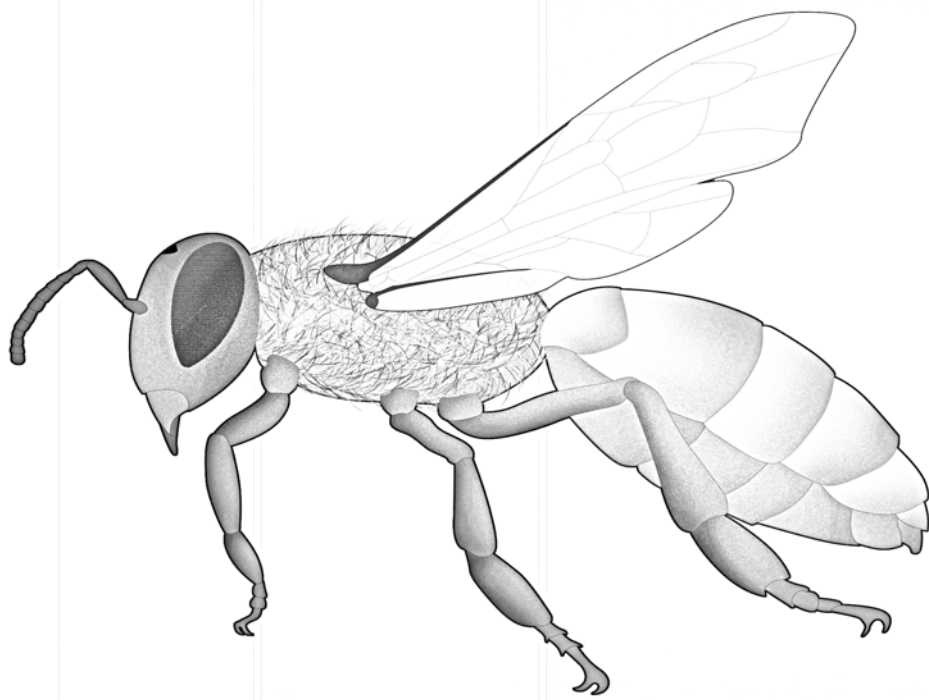
mandíbula



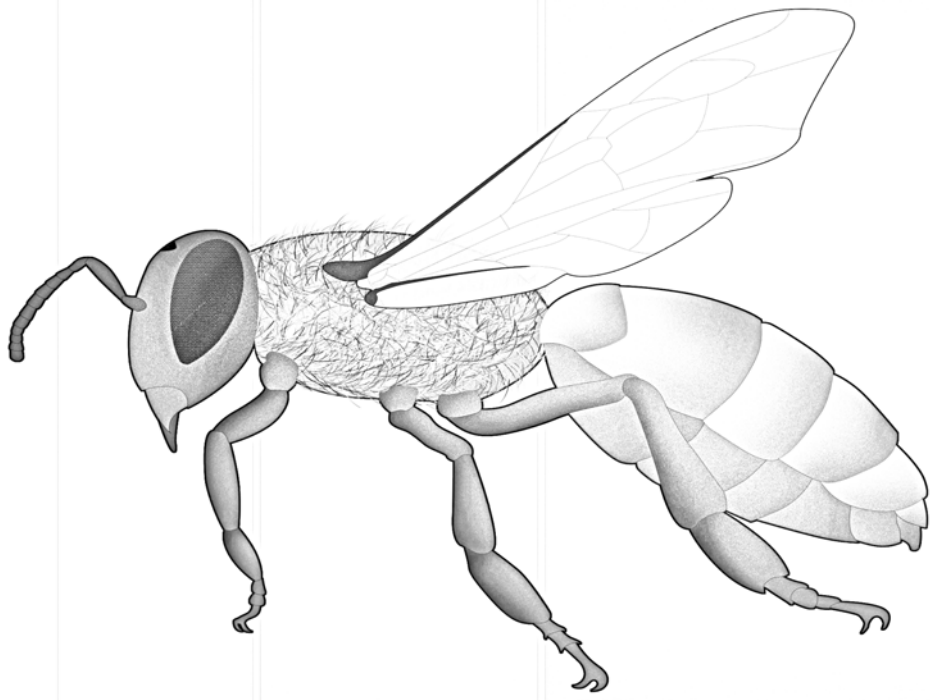
proboscis



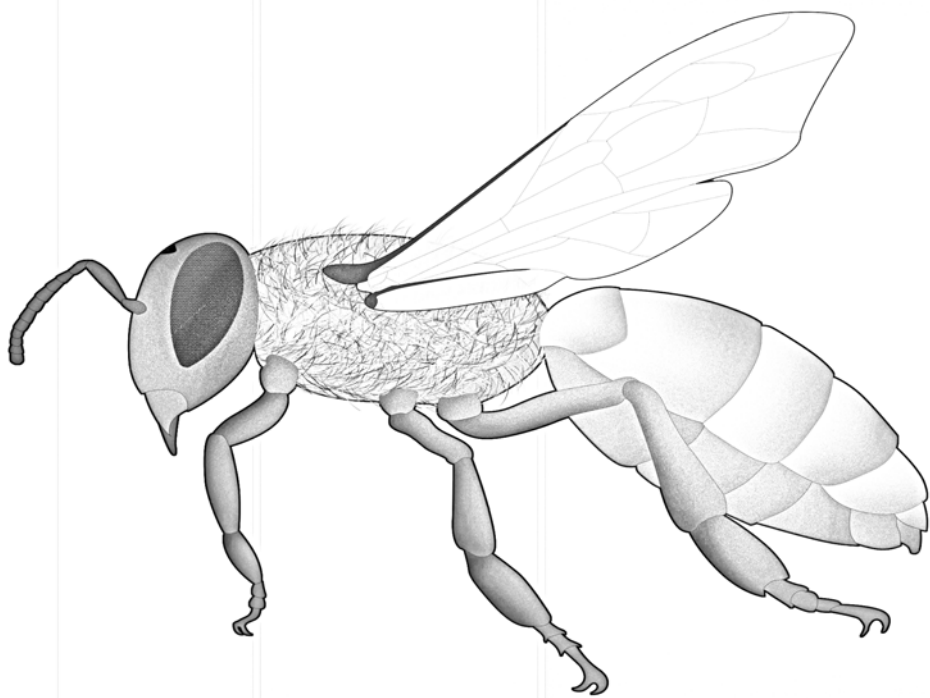
ala anterior



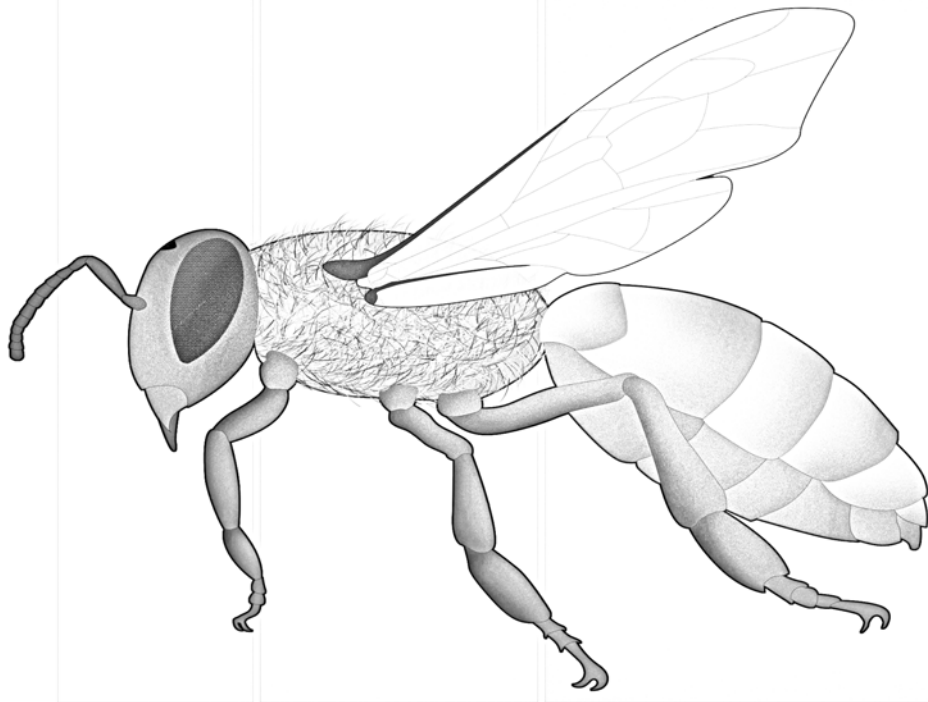
ala posterior



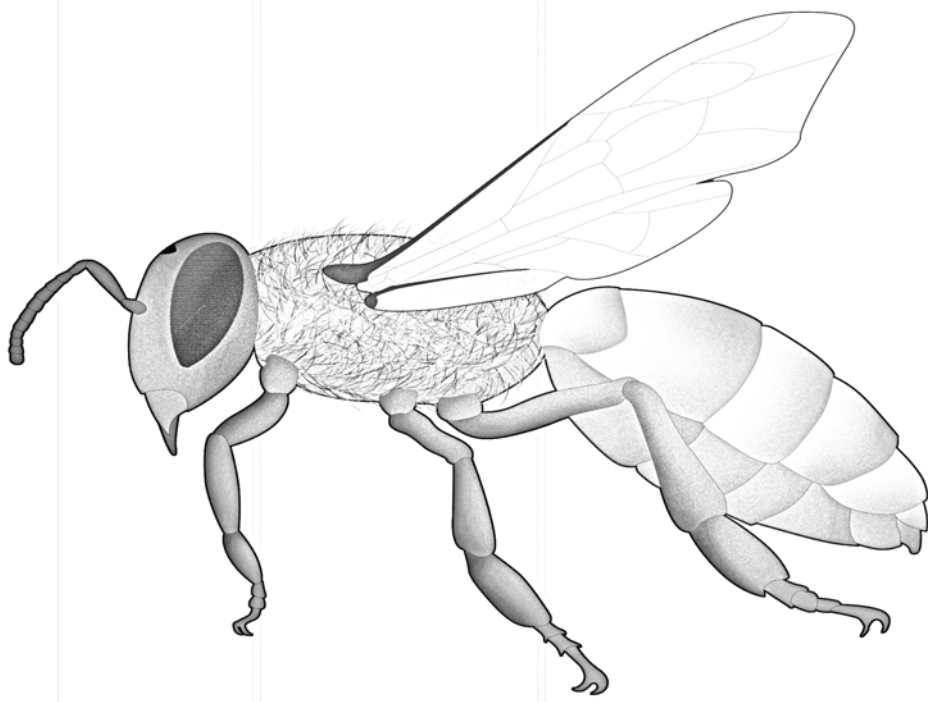
pata delantera



pata media

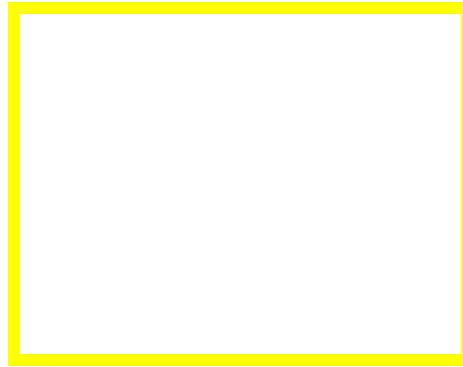


pata trasera



aguijón

huevo



ciclo de
vida abeja



abeja



larva



pupa

Recorta las imágenes y pégalas en el orden correcto en la parte superior.

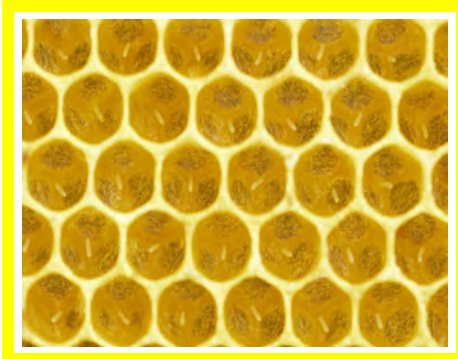


Bild: <https://commons.wikimedia.org/wiki/File:HoneyBeeAnatomy.svg>

bearbeitet mit: Adobe Photoshop, GIMP und Paint.NET

Schrift: KG Primary Penmanship 2