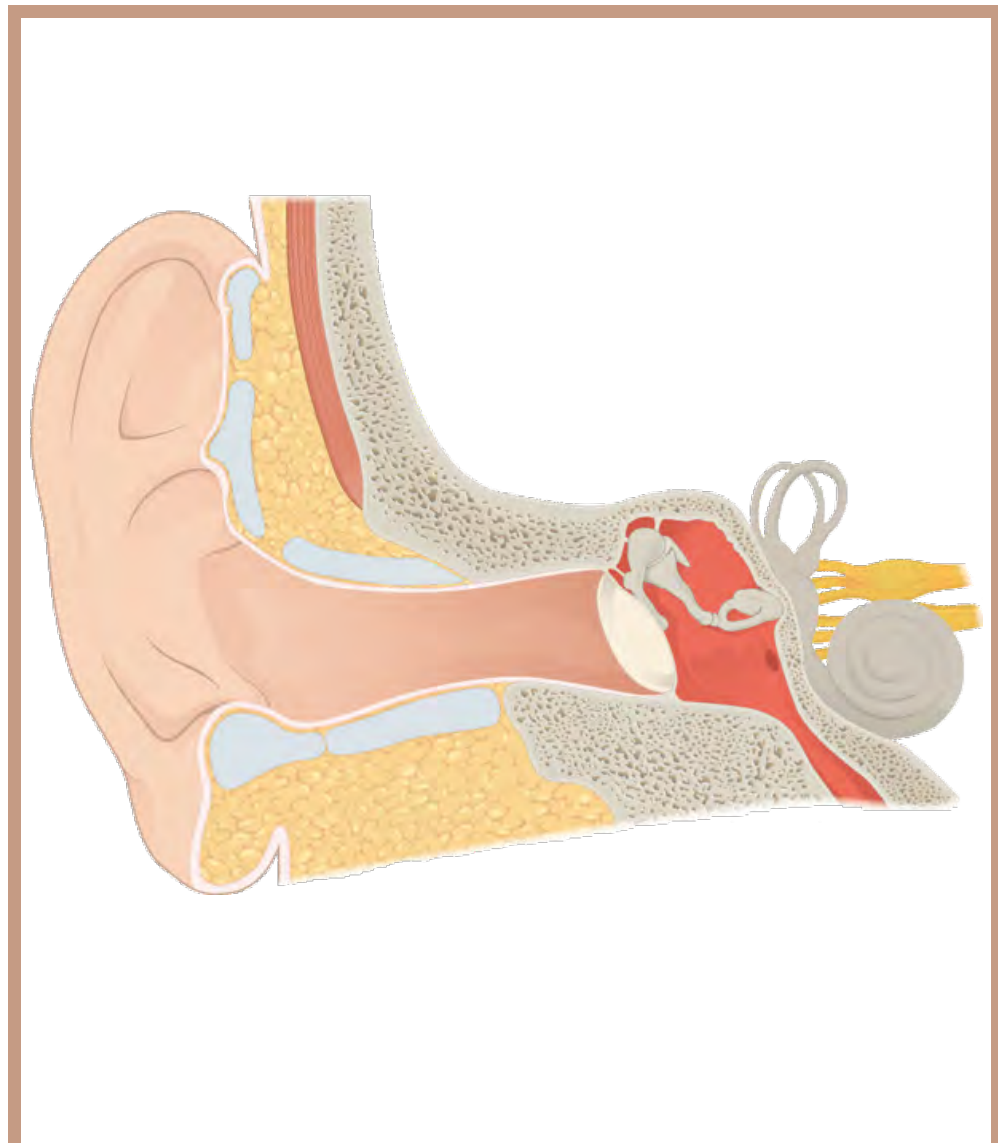
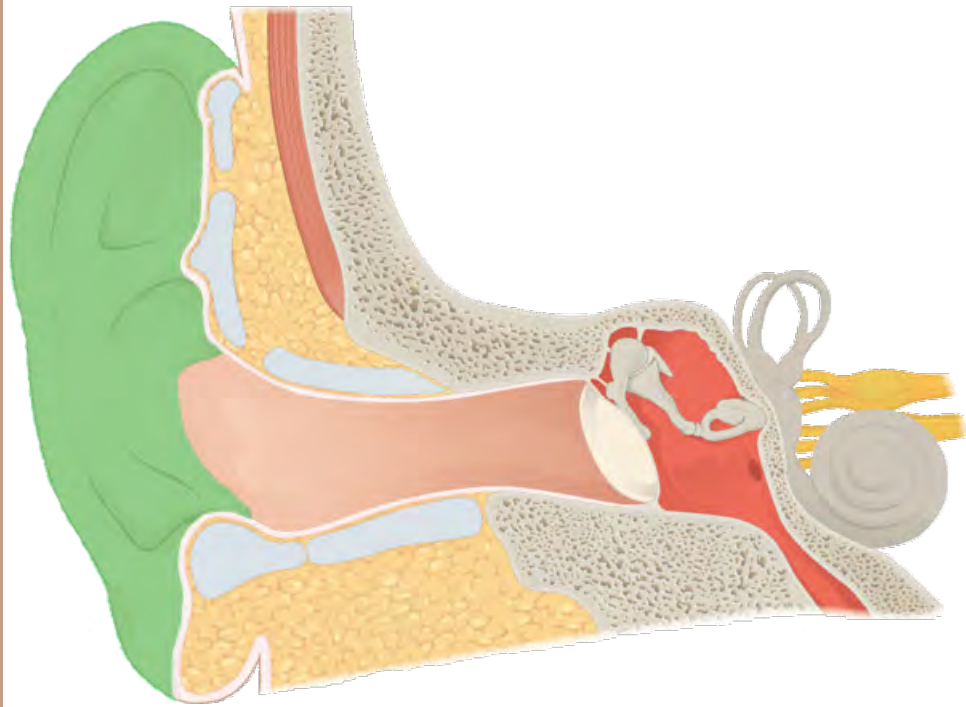


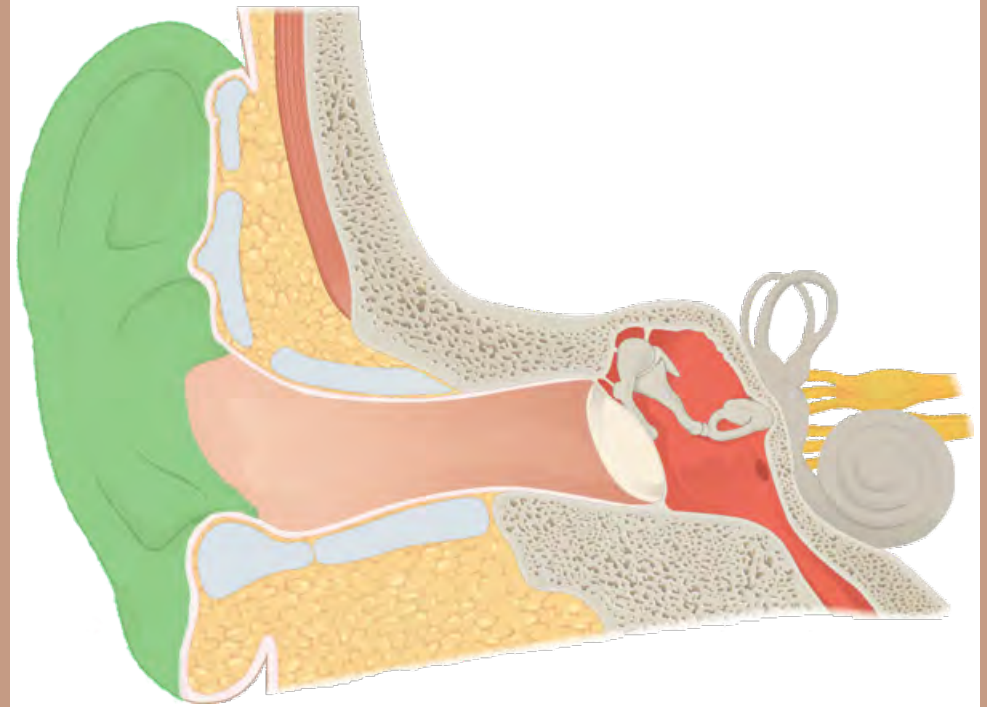
das Ohr



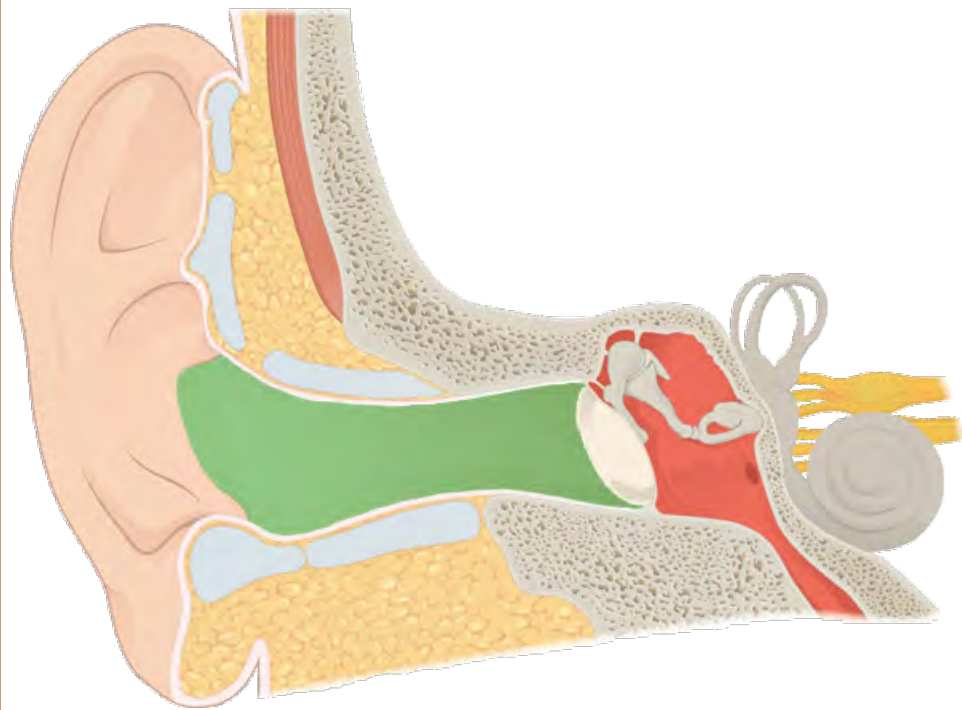
das Ohr



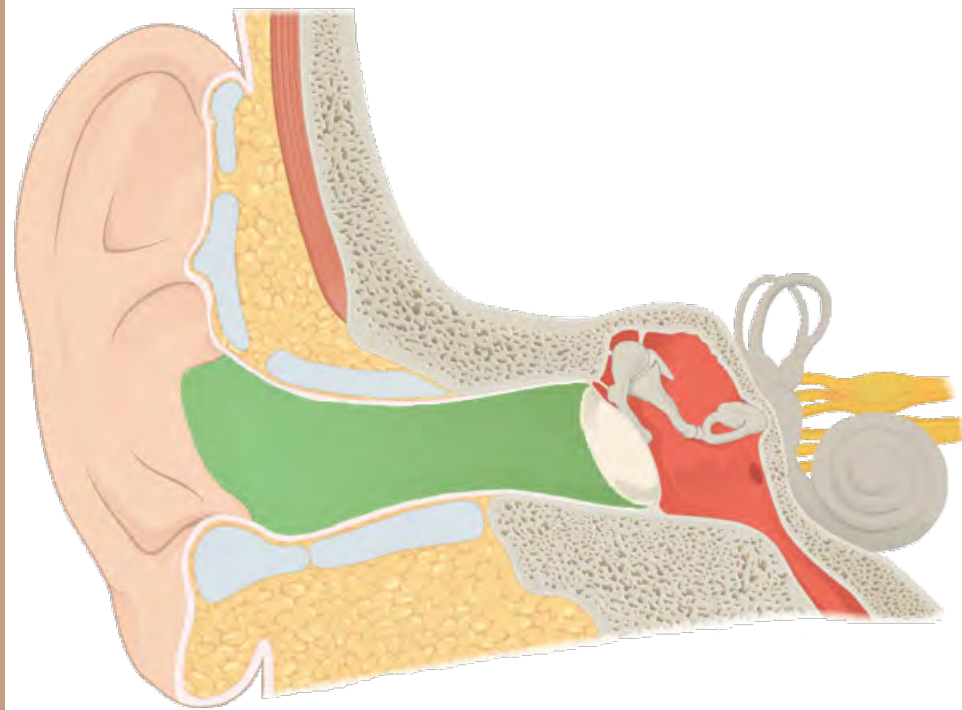
die Ohrmuschel



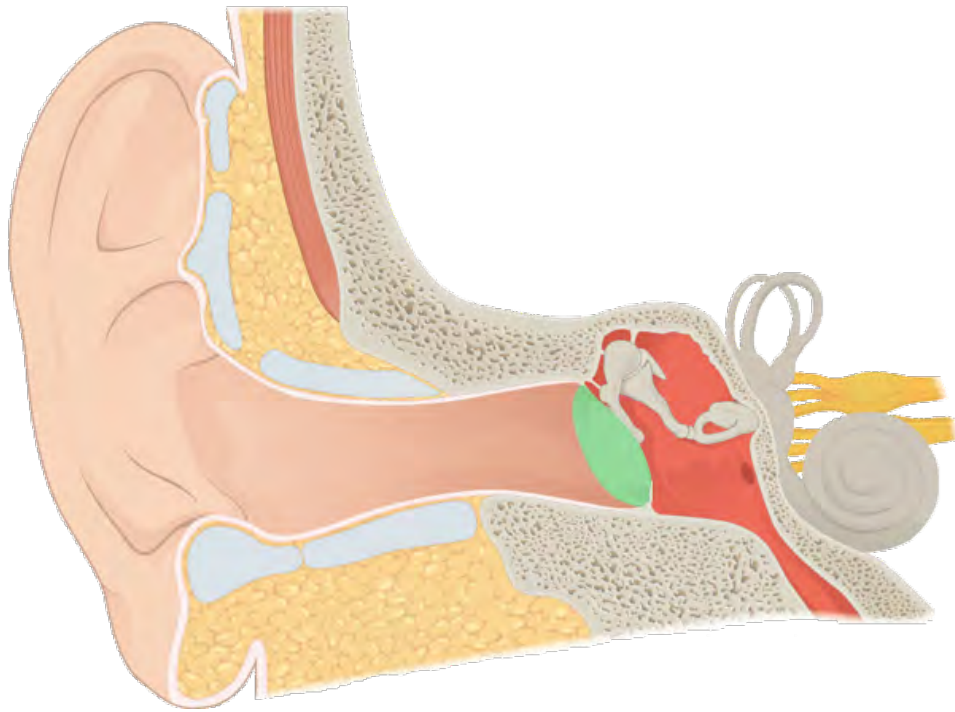
die Ohrmuschel



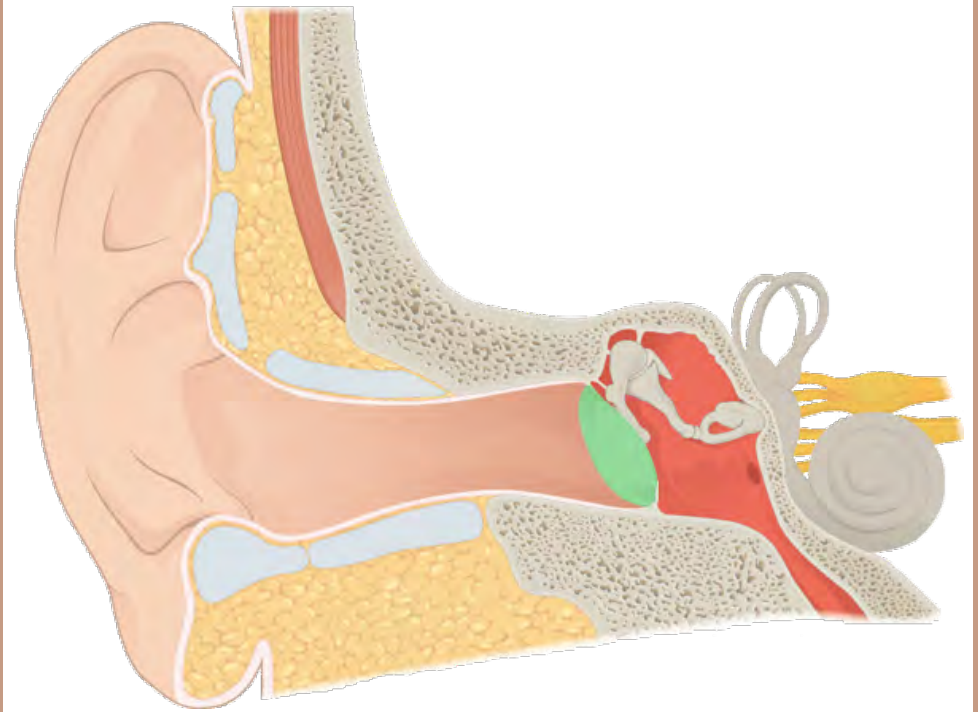
äußerer Gehörgang



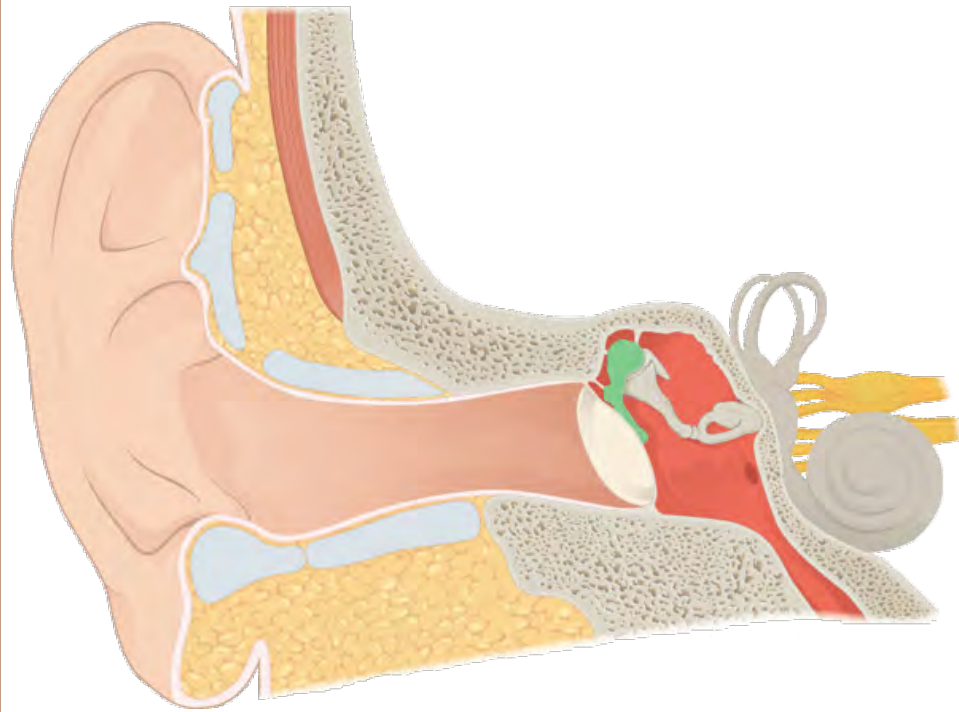
äußerer Gehörgang



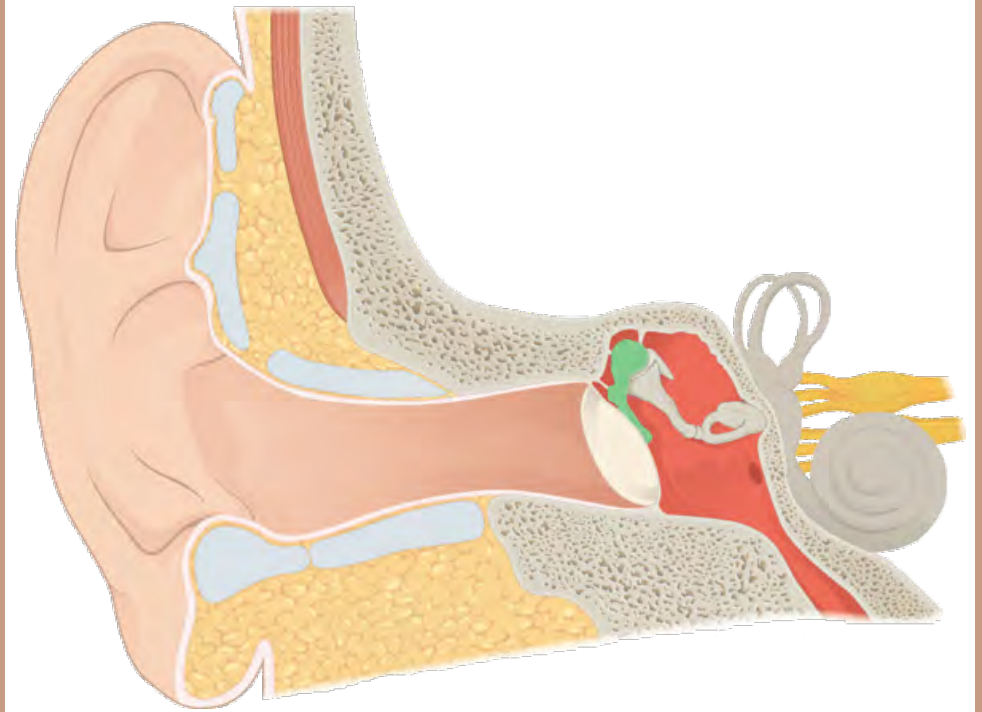
das Trommelfell



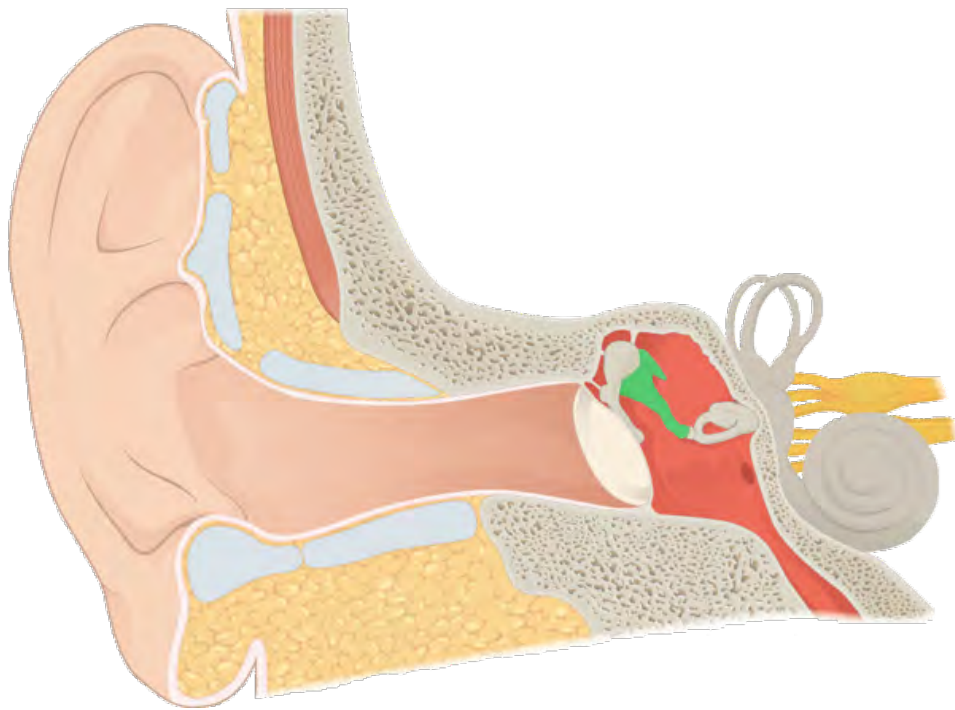
das Trommelfell



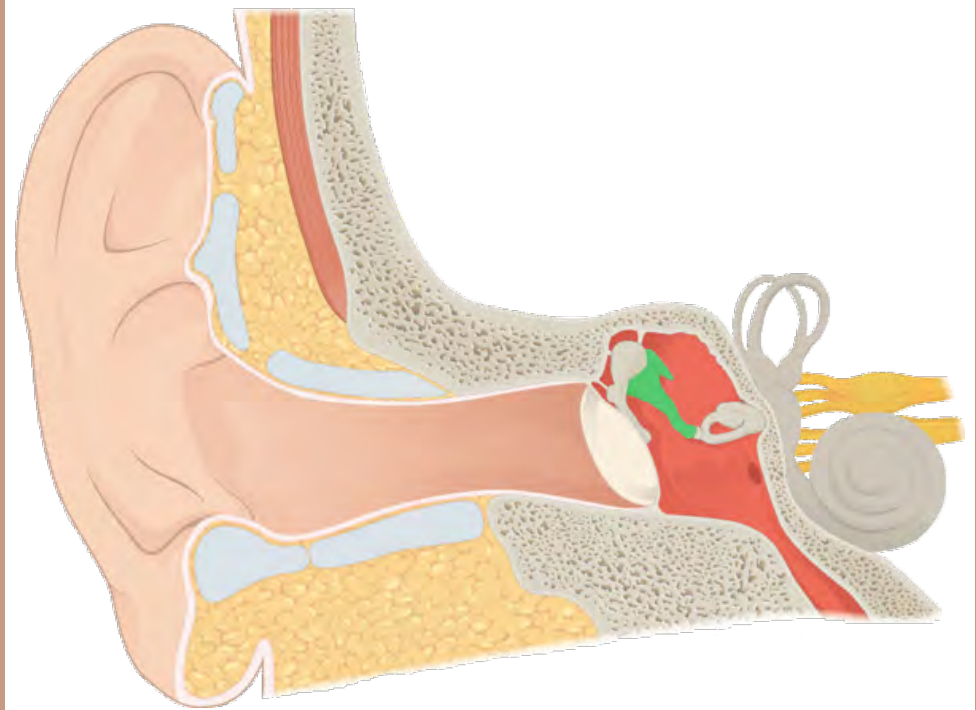
der Hammer



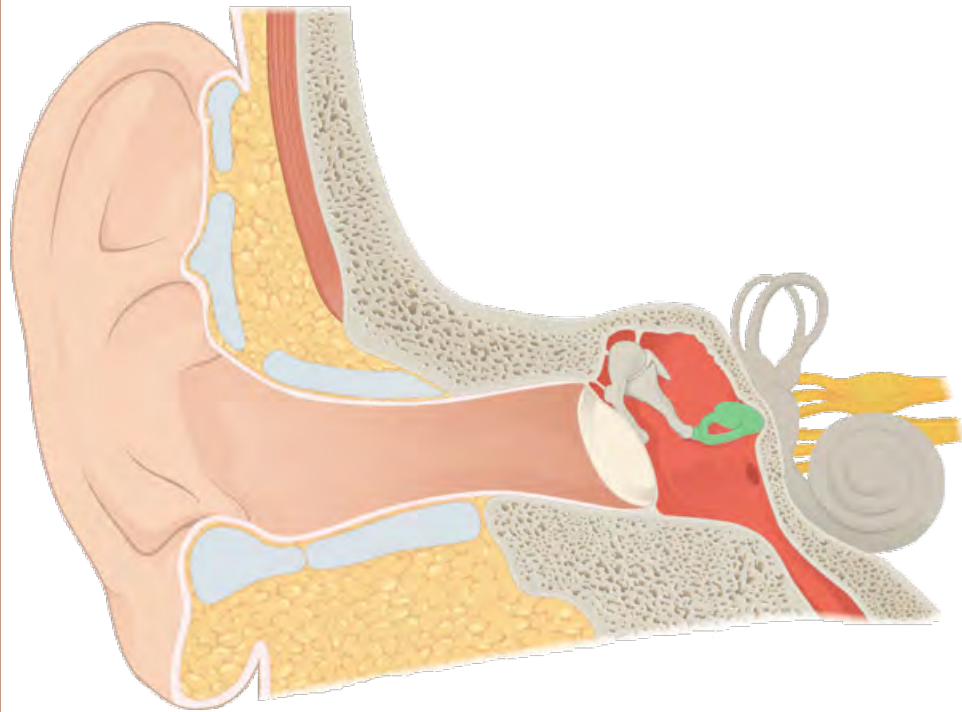
der Hammer



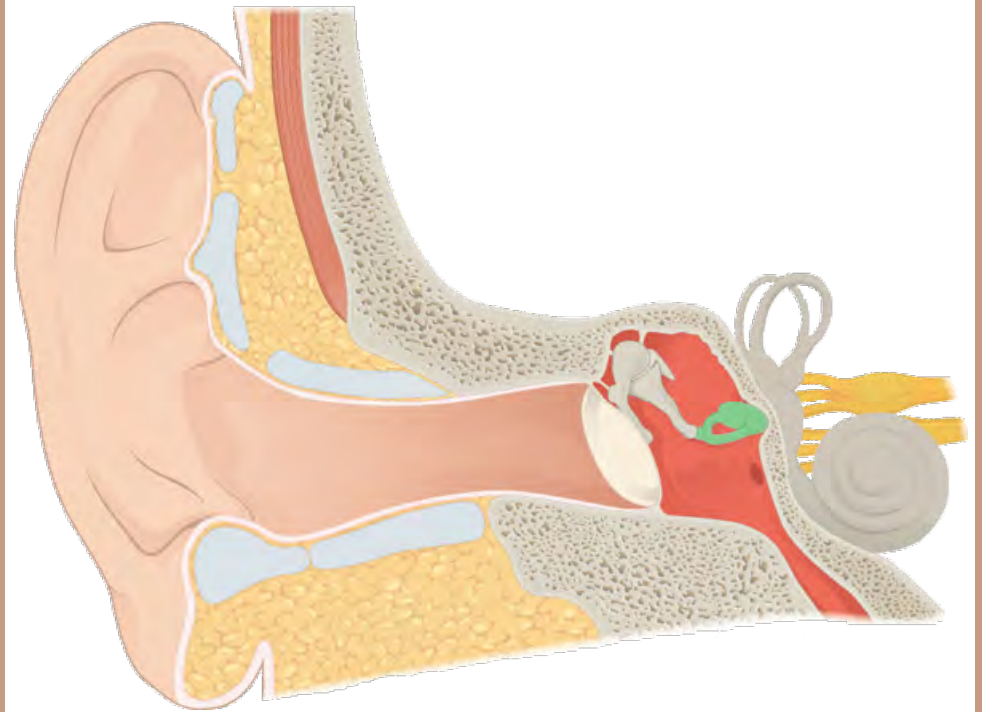
der Amboss



der Amboss

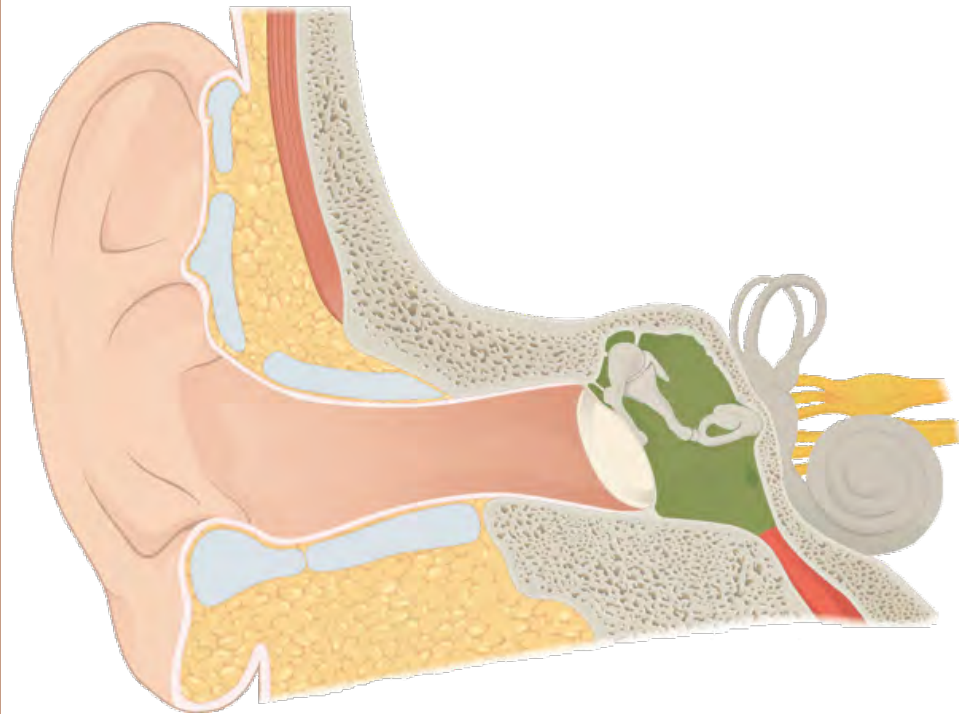


der Steigbügel

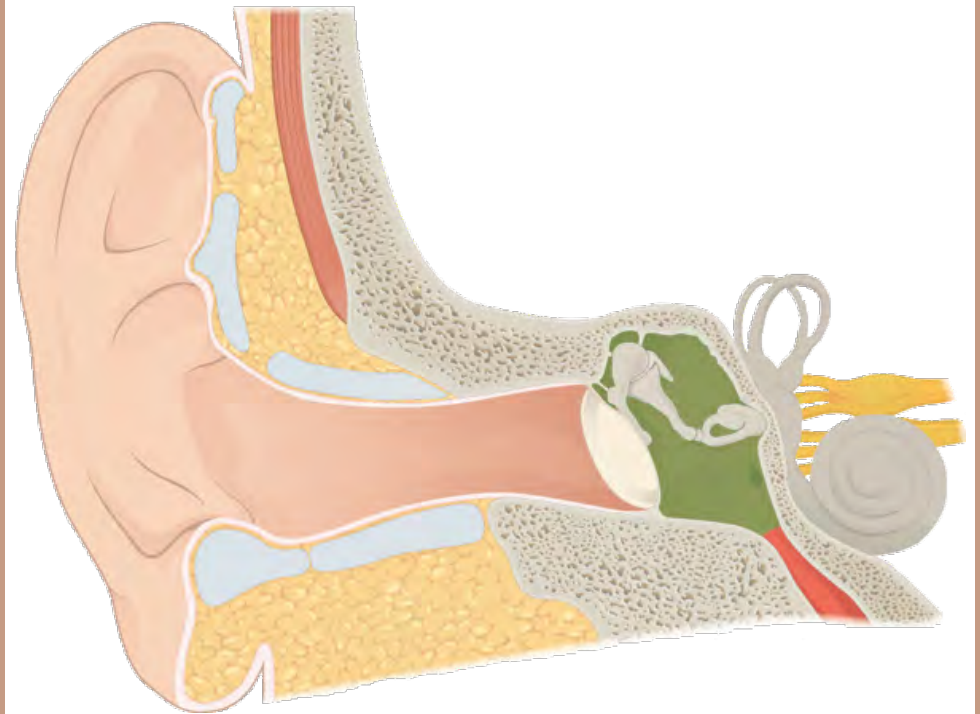


der Steigbügel



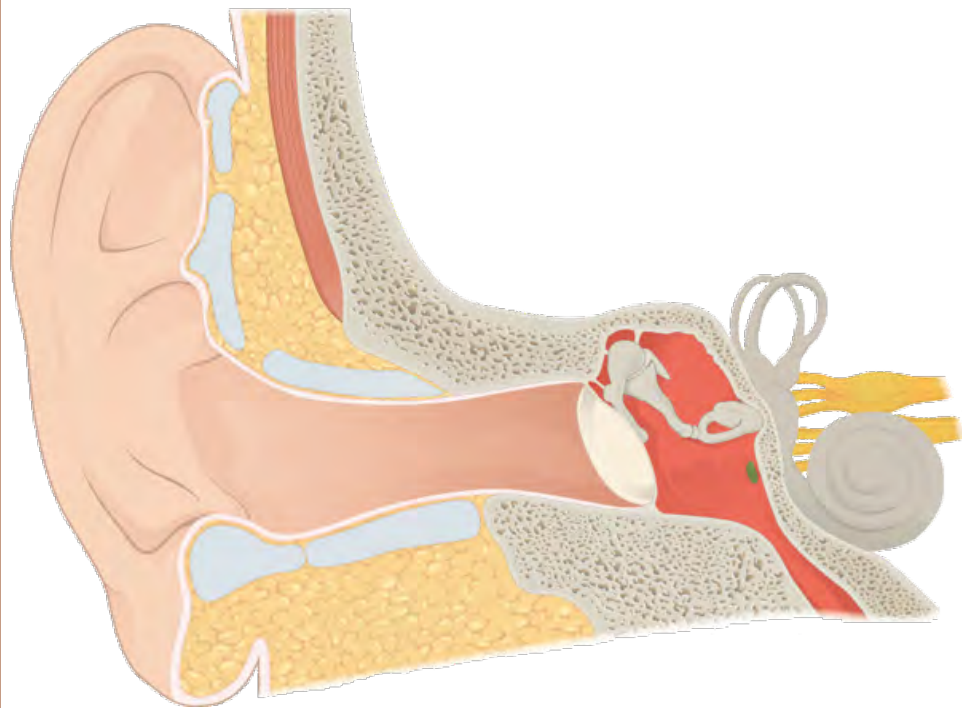


die Paukenhöhle

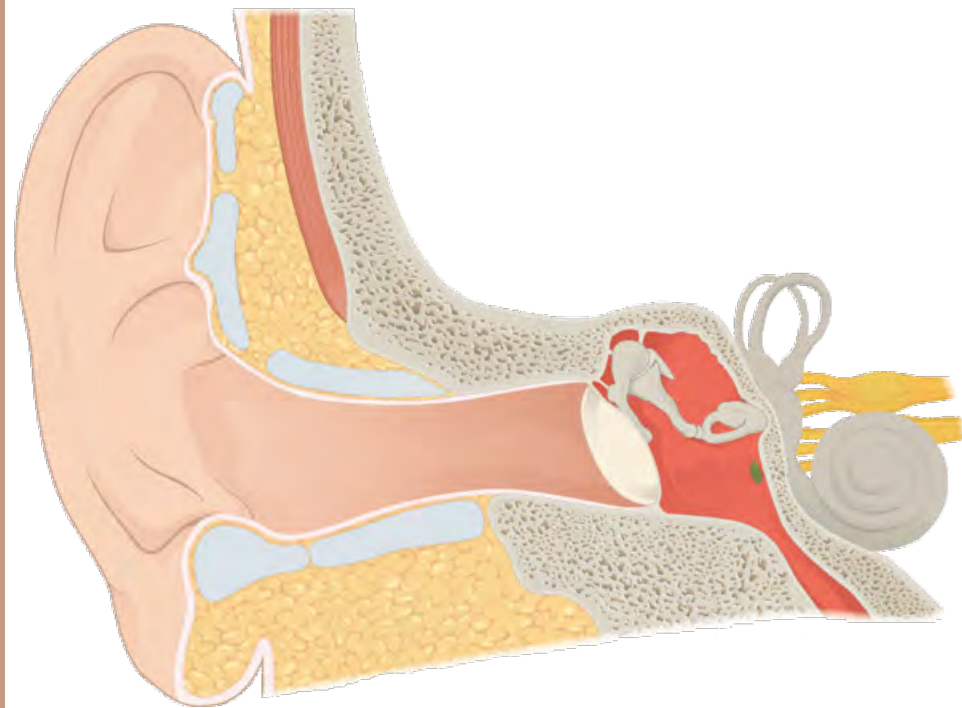


die Paukenhöhle

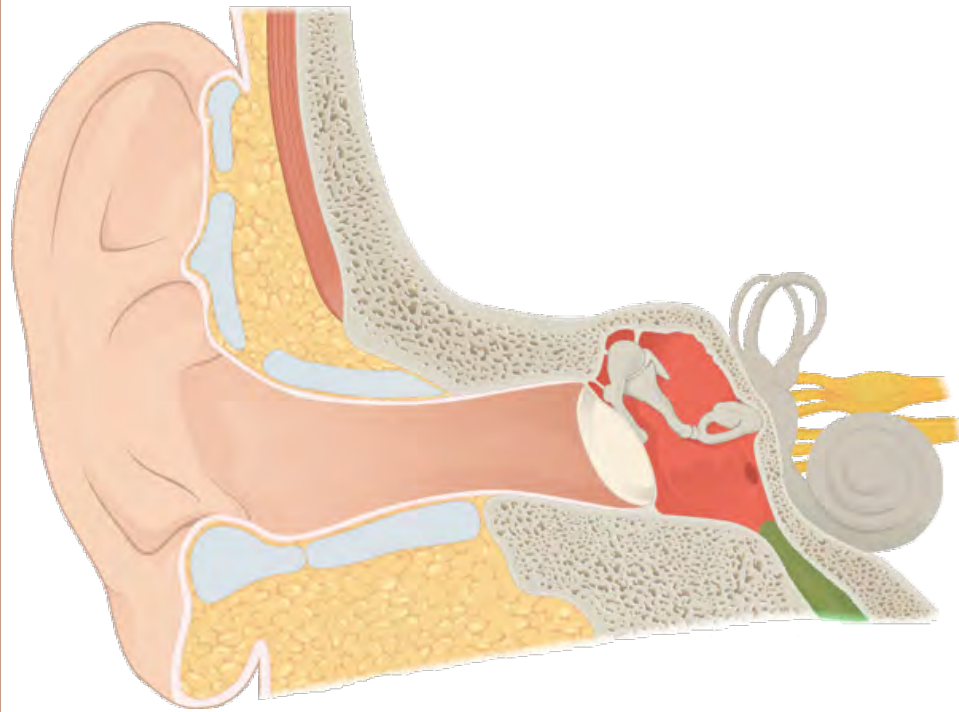




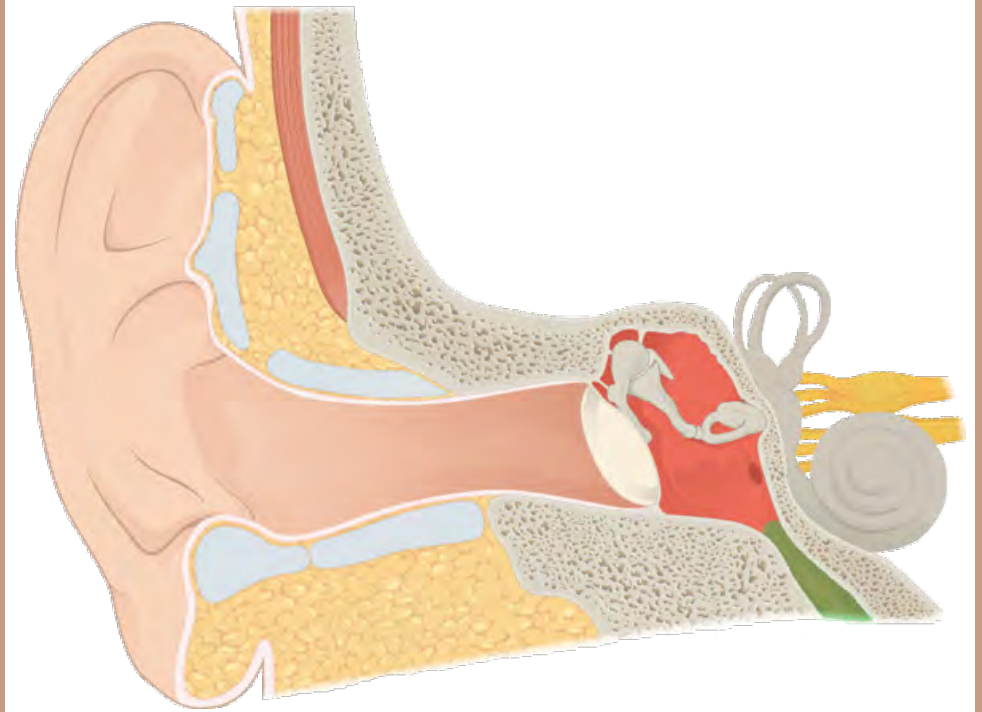
das runde Fenster



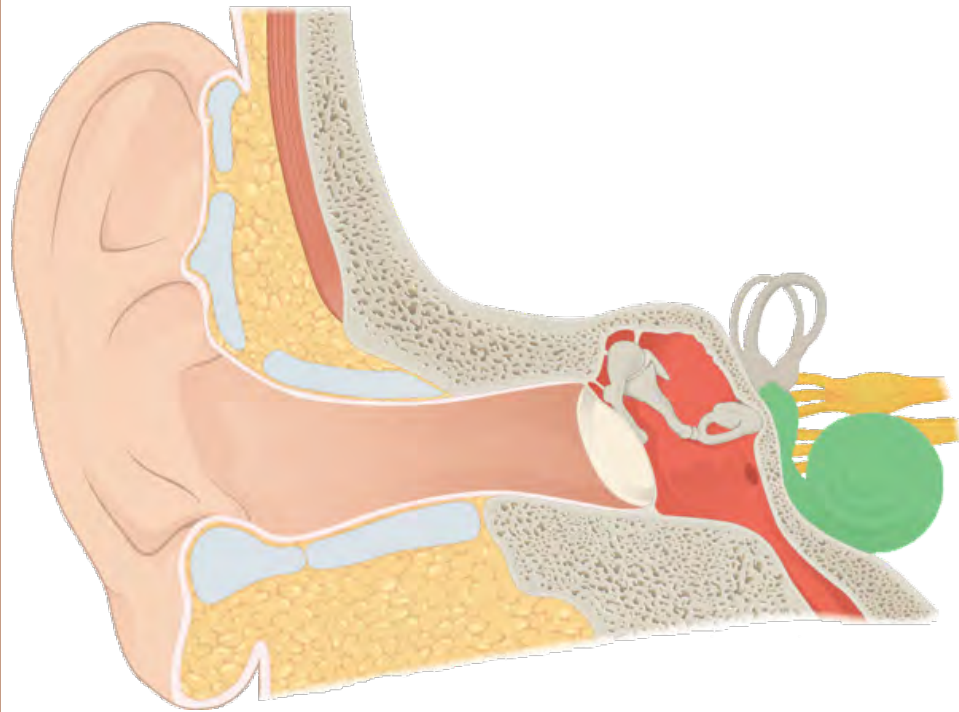
das runde Fenster



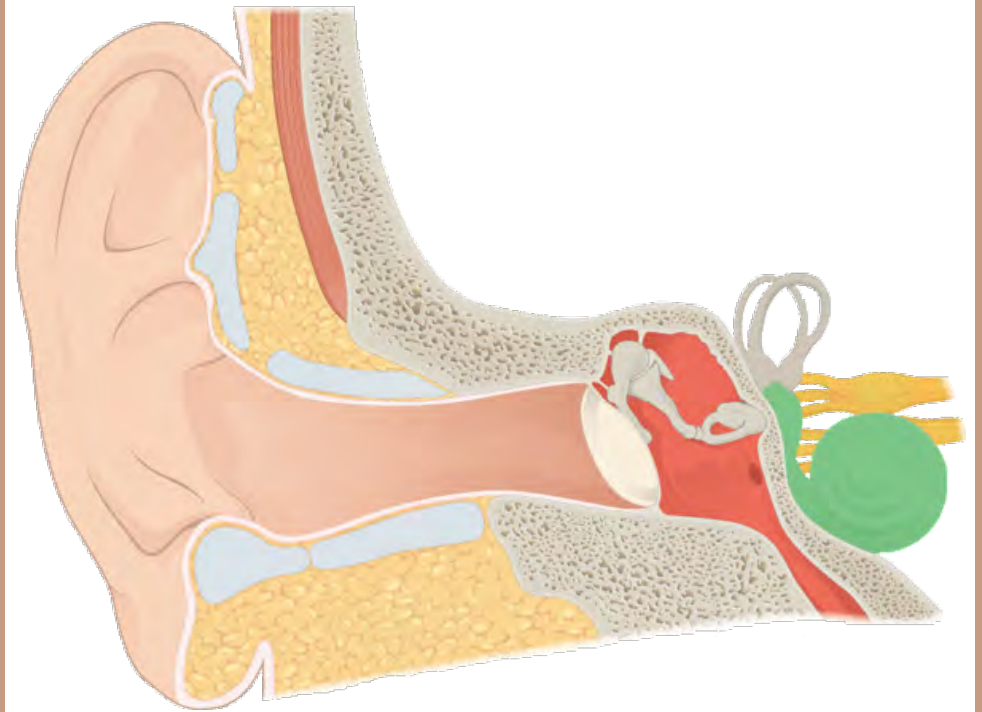
eustachische Röhre



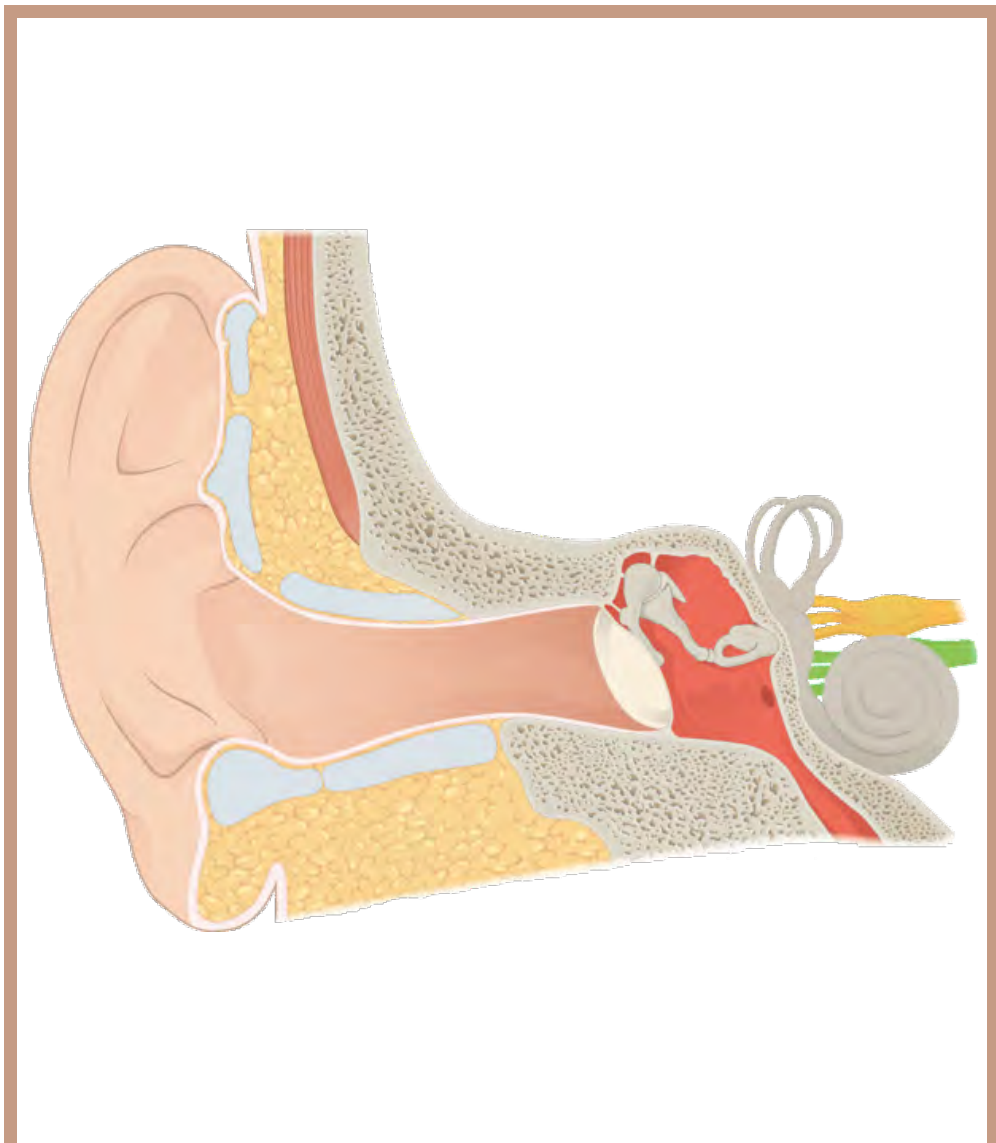
eustachische Röhre



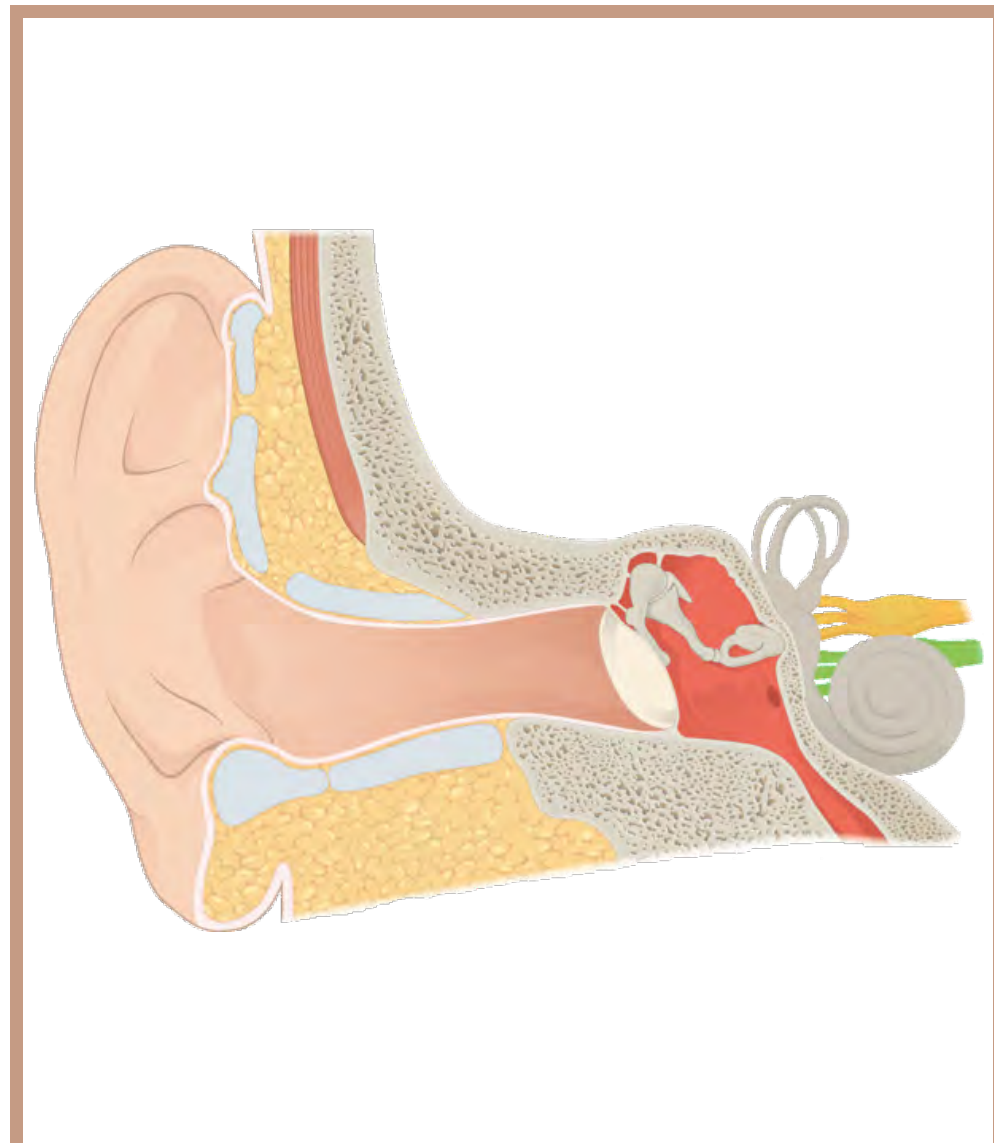
die Hörschnecke



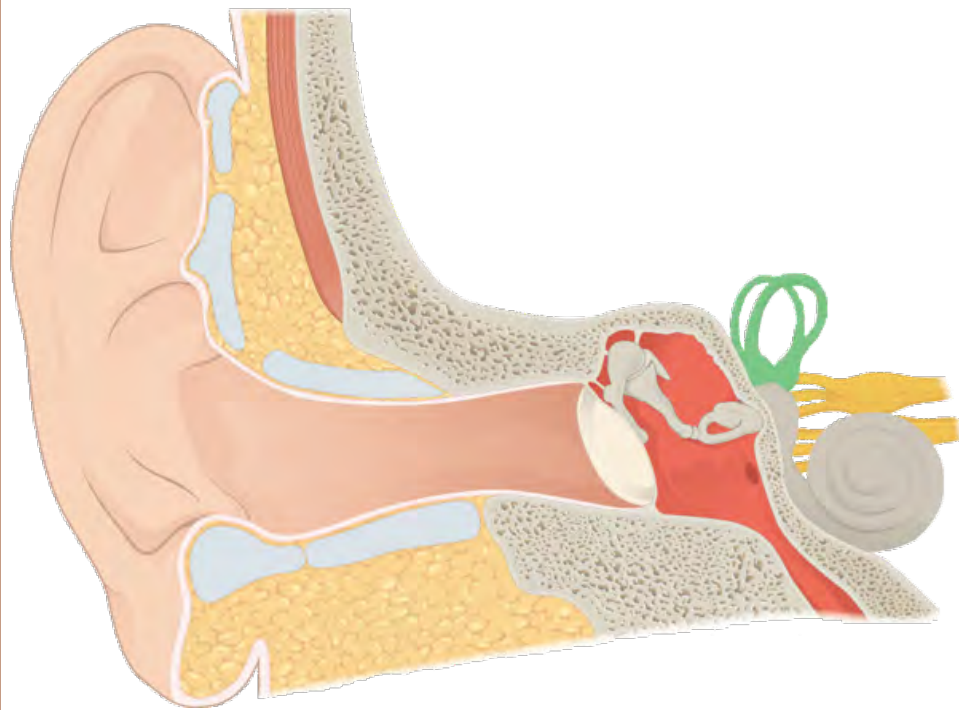
die Hörschnecke



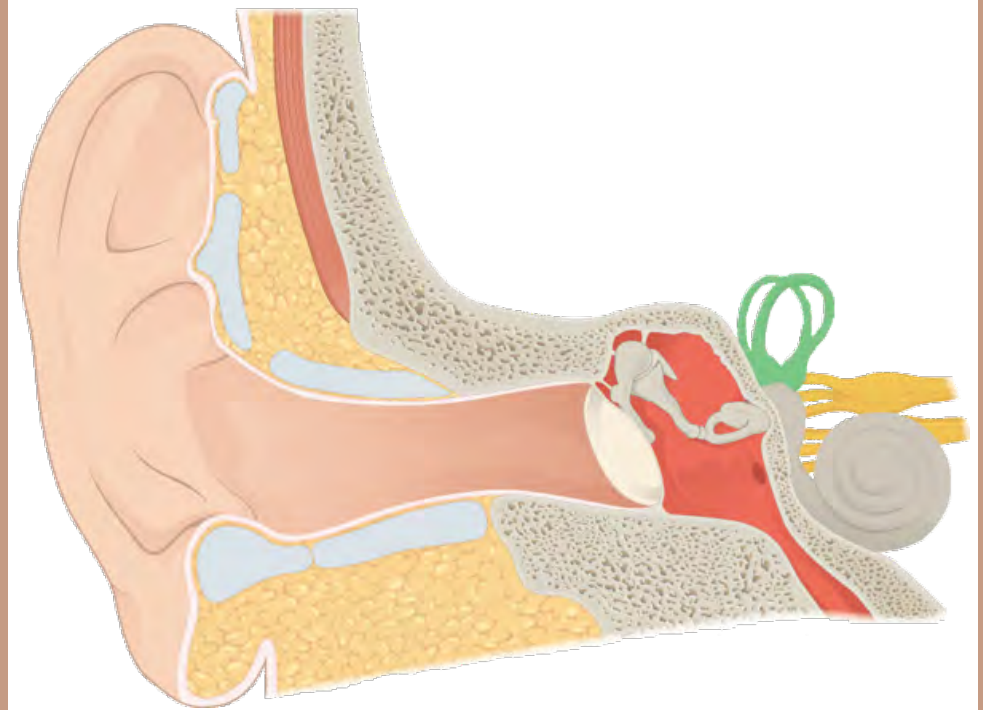
der Hörnerv



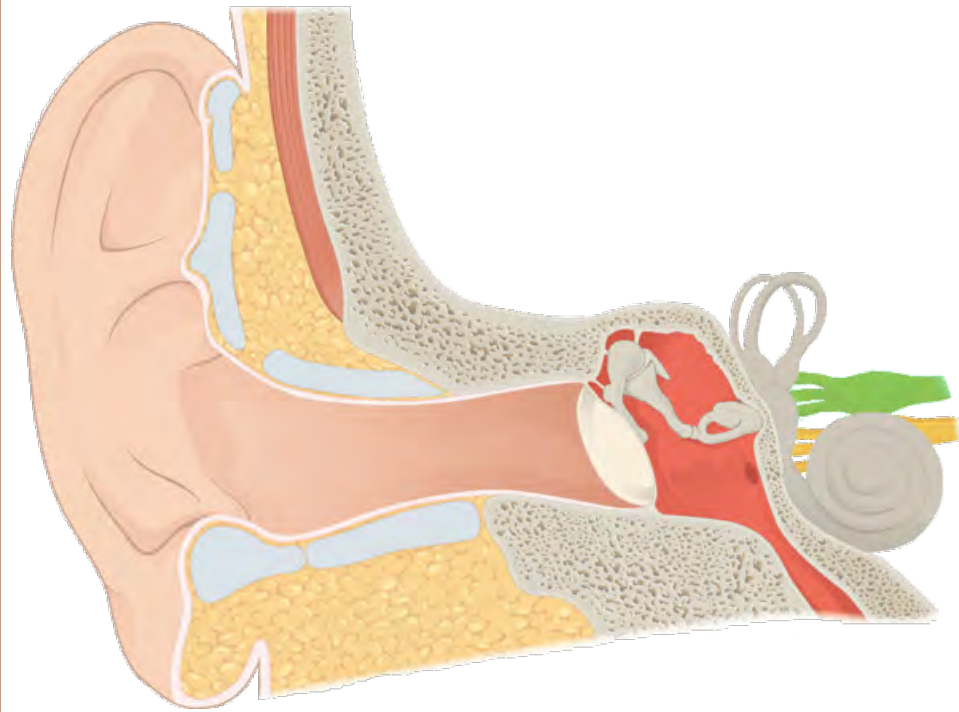
der Hörnerv



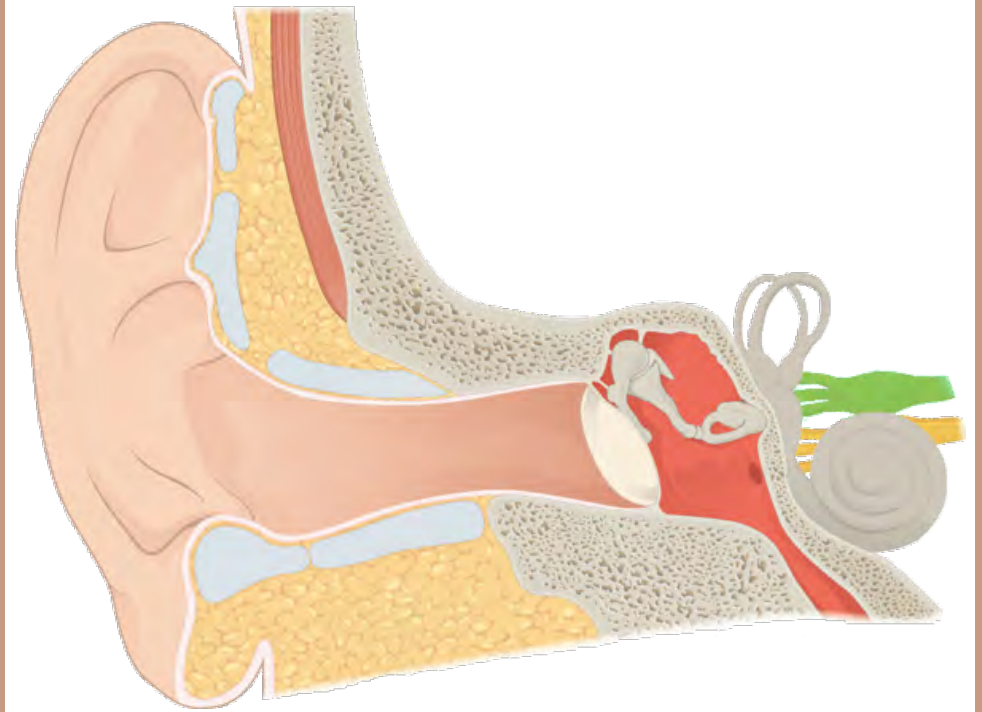
die Bogengänge



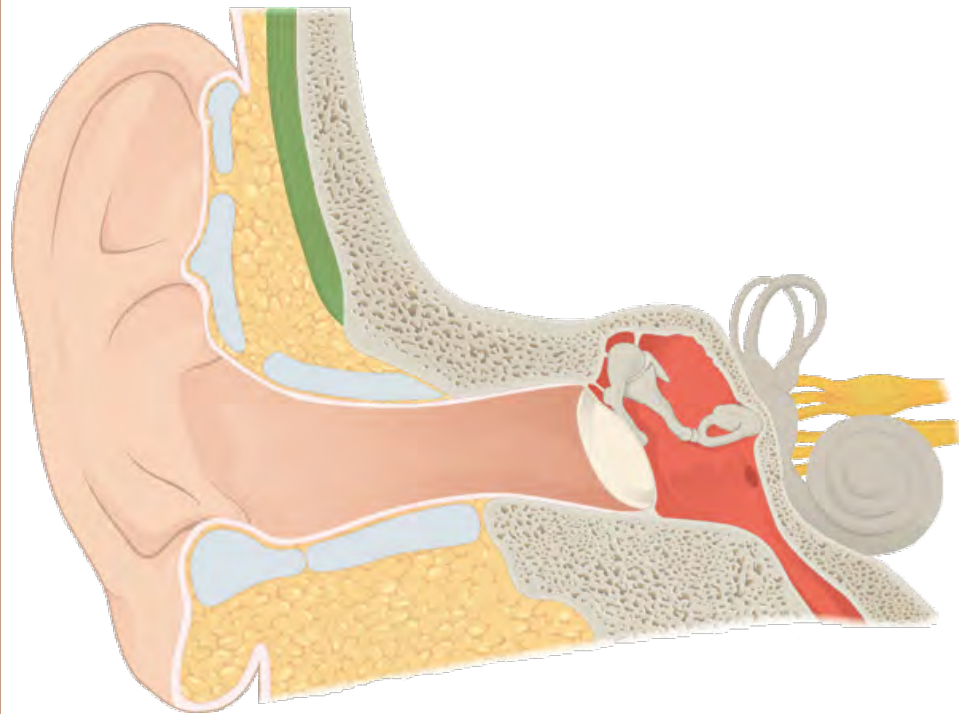
die Bogengänge



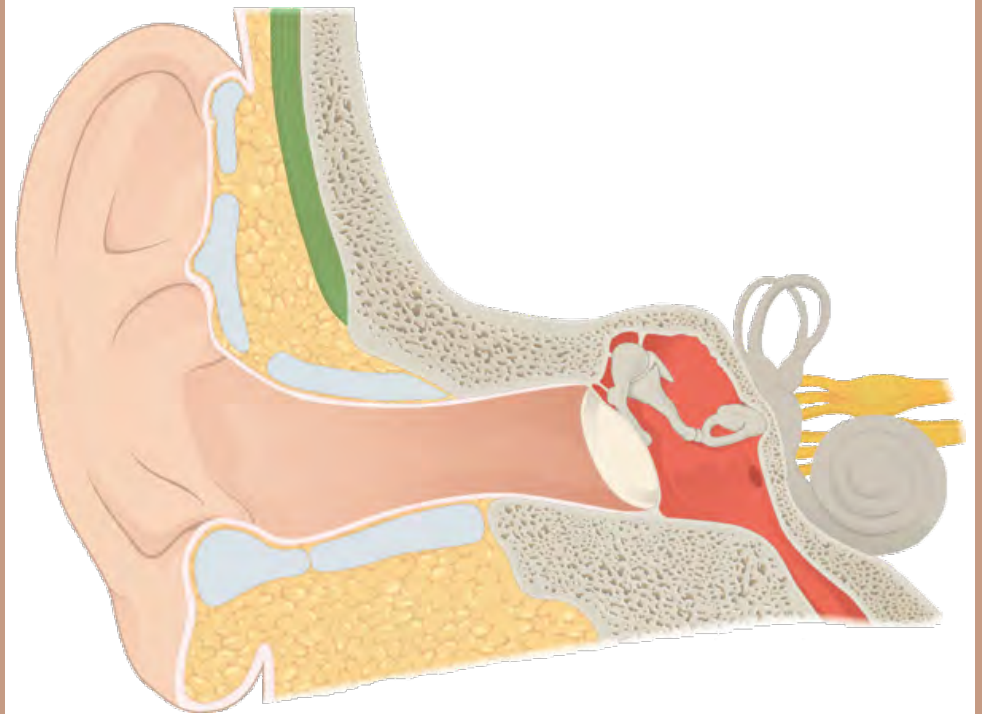
Gleichgewichtsnerv



Gleichgewichtsnerv

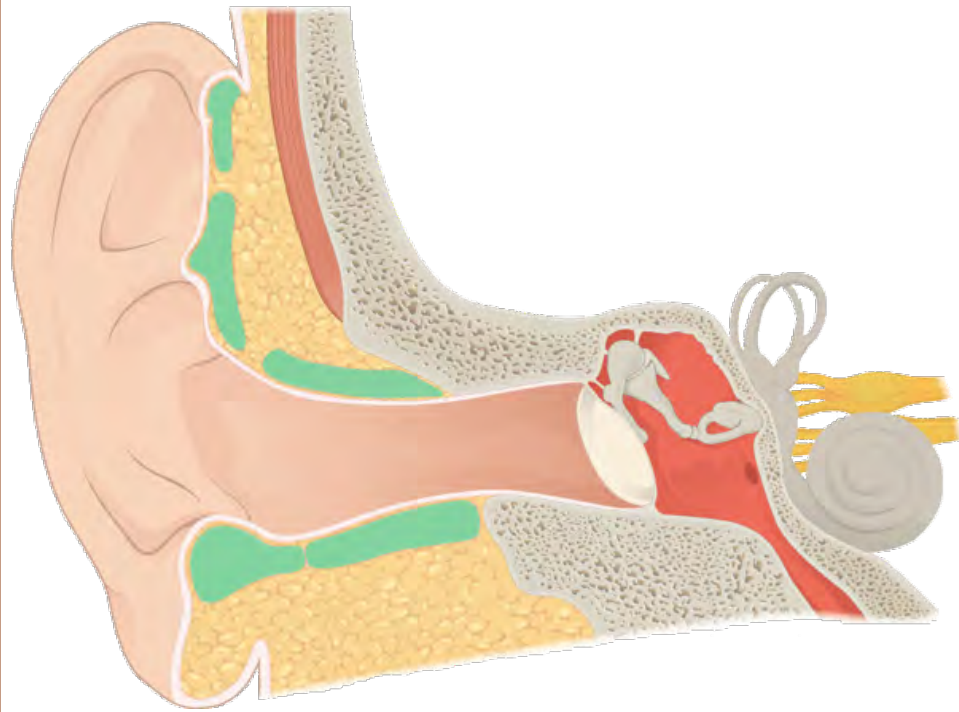


der Schläfenmuskel

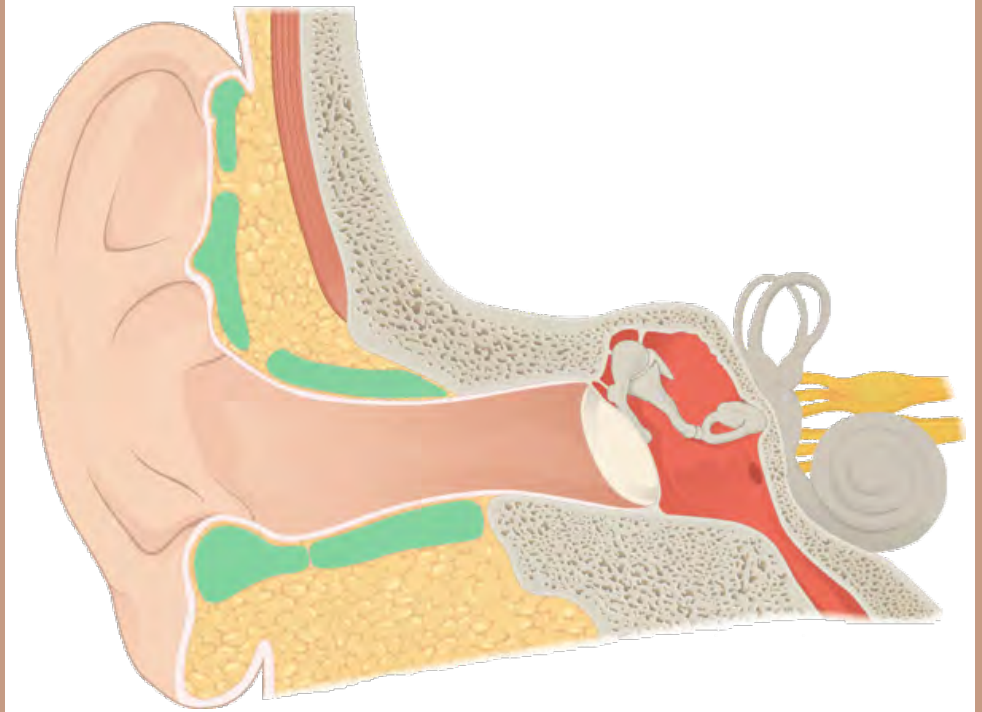


der Schläfenmuskel





elastischer Knorpel



elastischer Knorpel

Bild: <https://commons.wikimedia.org/wiki/Hauptseite>

Schrift: KG Primary Penmanship 2

bearbeitet mit: Adobe Photoshop