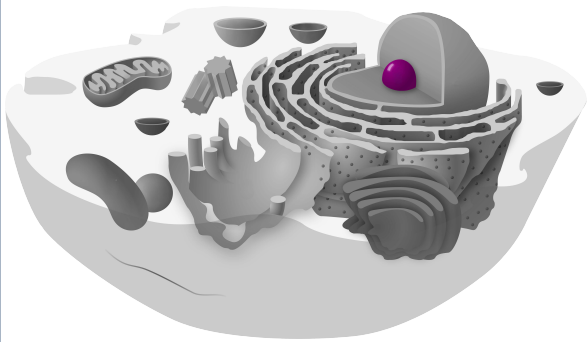




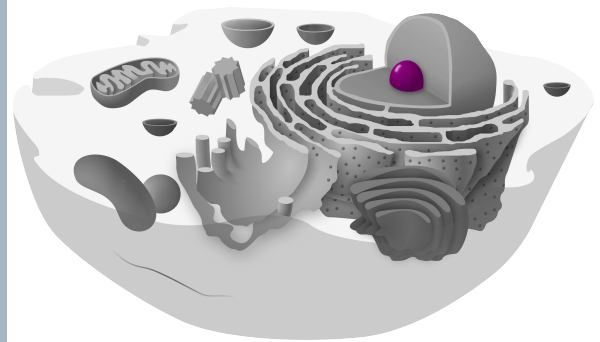
tierische Zelle



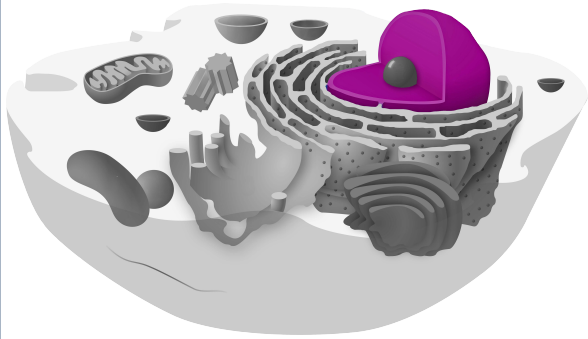
tierische Zelle



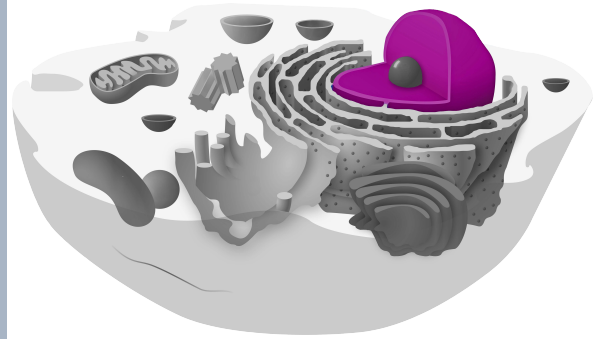
Kernkörperchen



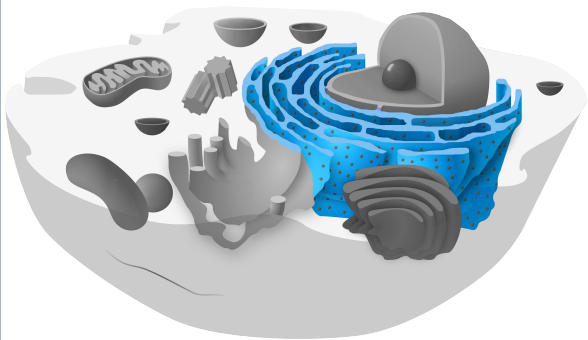
Kernkörperchen



Zellkern



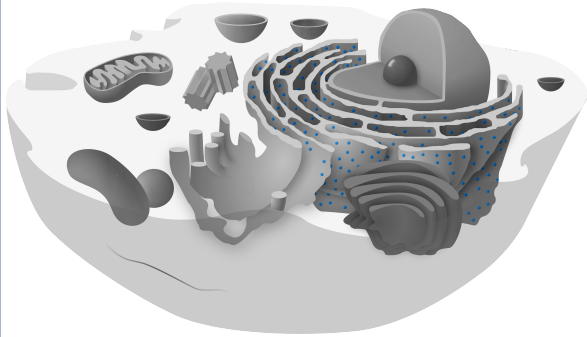
Zellkern



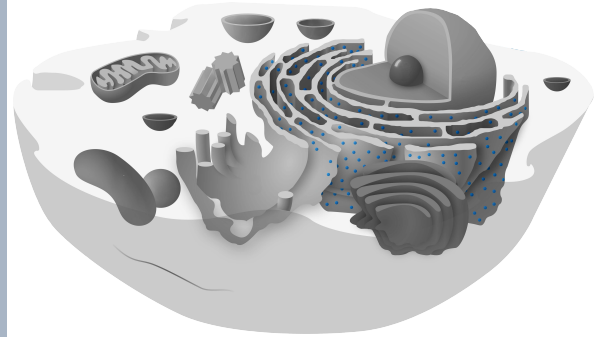
raues endoplasmatisches
Retikulum



raues endoplasmatisches
Retikulum



Ribosomen



Ribosomen



glattes endoplasmatische
Retikulum



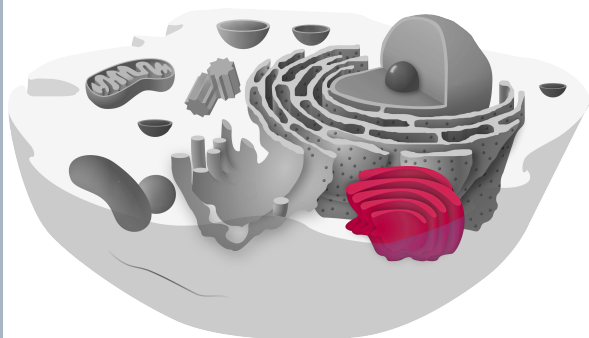
glattes endoplasmatische
Retikulum



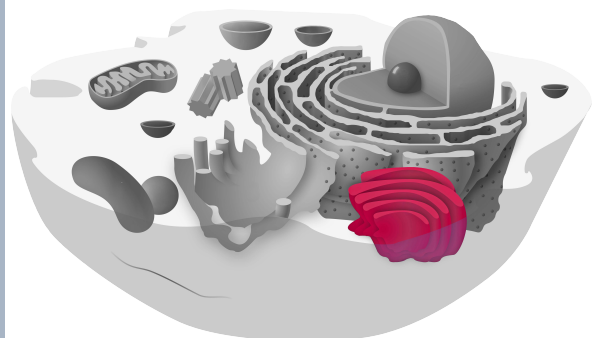
Vesikel



Vesikel



Golgi-Apparat



Golgi-Apparat



Zytoskelett



Zytoskelett



Mitochondrien



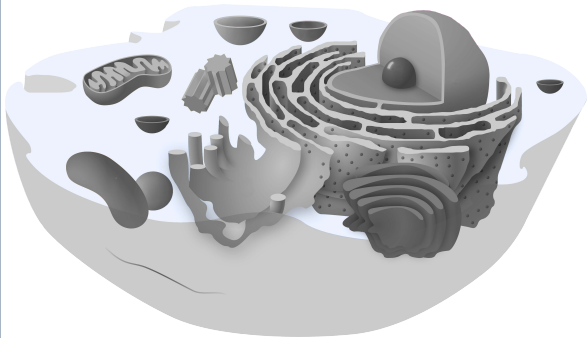
Mitochondrien



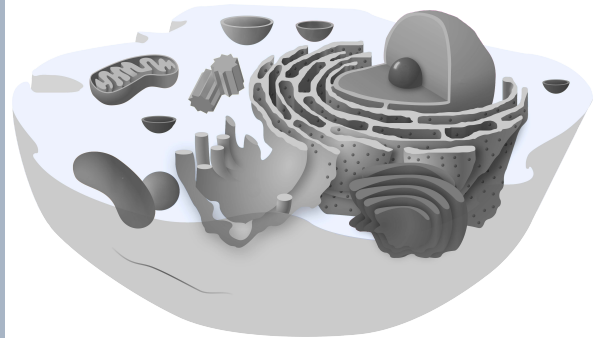
Lysosomen



Lysosomen



Zytosol



Zytosol



Peroxisom



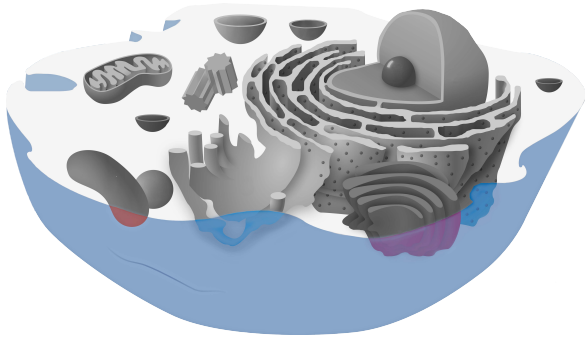
Peroxisom



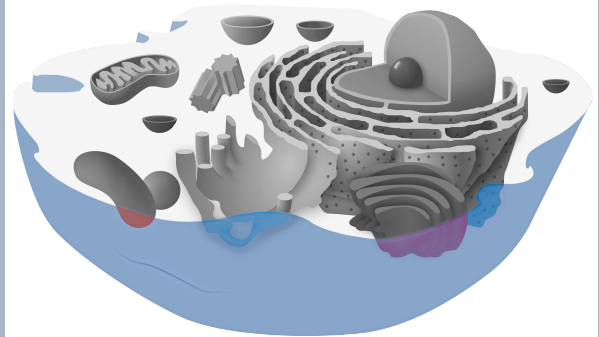
Zentriolen



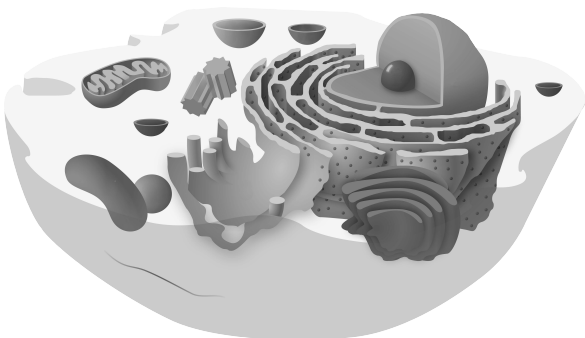
Zentriolen



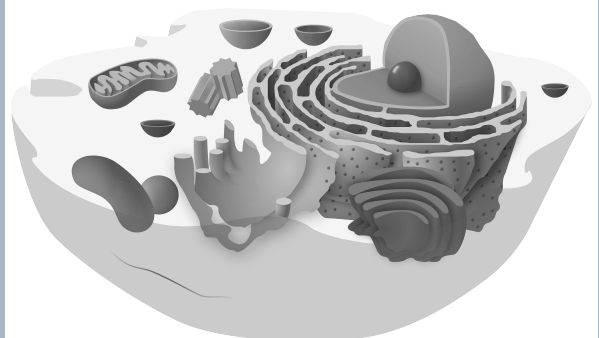
Zellmembran



Zellmembran



tierische Zelle
schwarz/weiß



tierische Zelle
schwarz/weiß

Quellen

[Kelvinsong](#), [Animal Cell](#), Beschriftung entfernt, , [CC0 1.0](#)

[Kelvinsong](#), [Animal Cell](#), Beschriftung entfernt, Zelle schwarz/weiß eingefärbt, einzelne Teile der Zelle farbig darauf gelegt, [CC0 1.0](#)

[Kelvinsong](#), [Animal Cell](#), Beschriftung entfernt, Zelle schwarz/weiß eingefärbt, [CC0 1.0](#)