



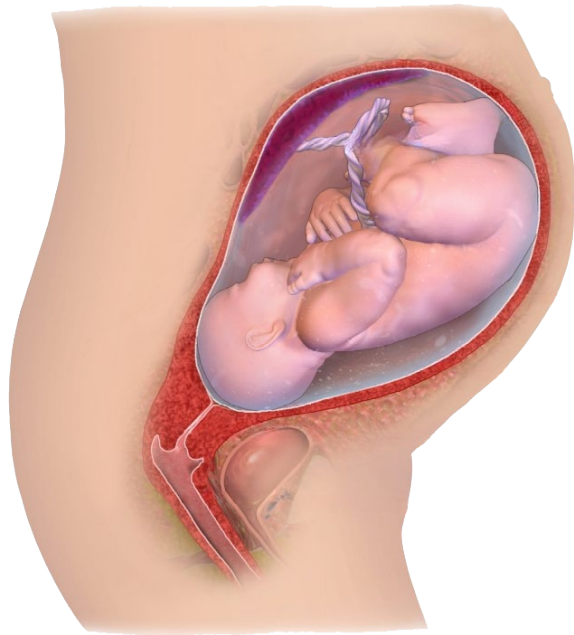
pregnant woman



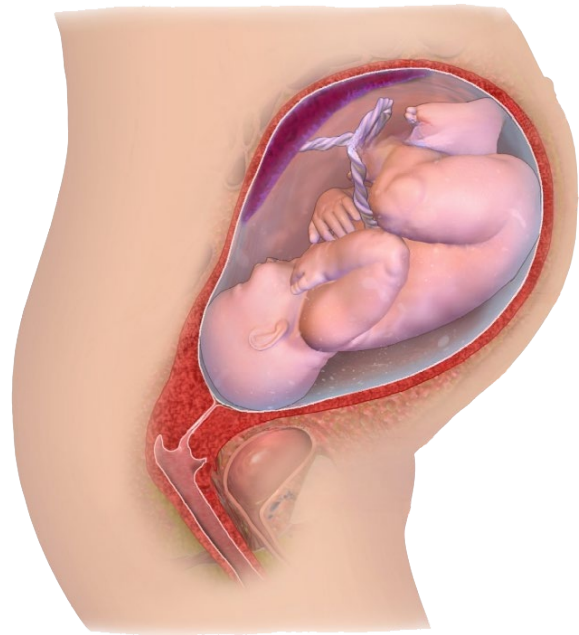
pregnant woman

pregnant woman

A woman is pregnant for an average of 38 weeks and then the child is born. During this time, many things change in a woman. Especially at the beginning of pregnancy, many women suffer from nausea, they gain weight and towards the end of pregnancy they are less able to perform.



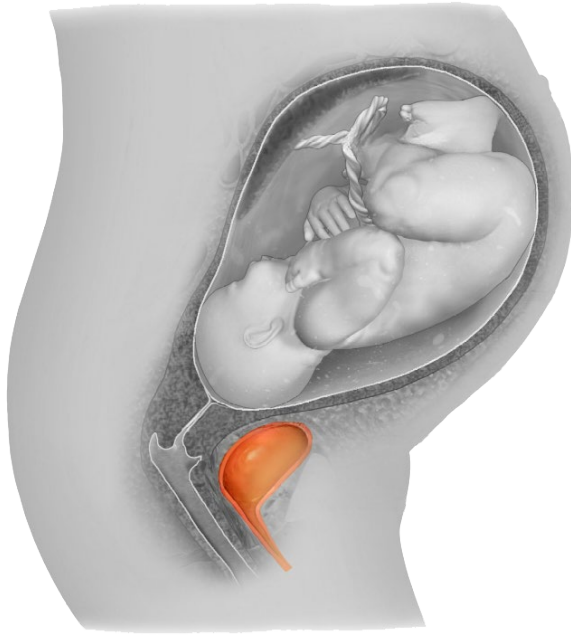
fetus in the uterus



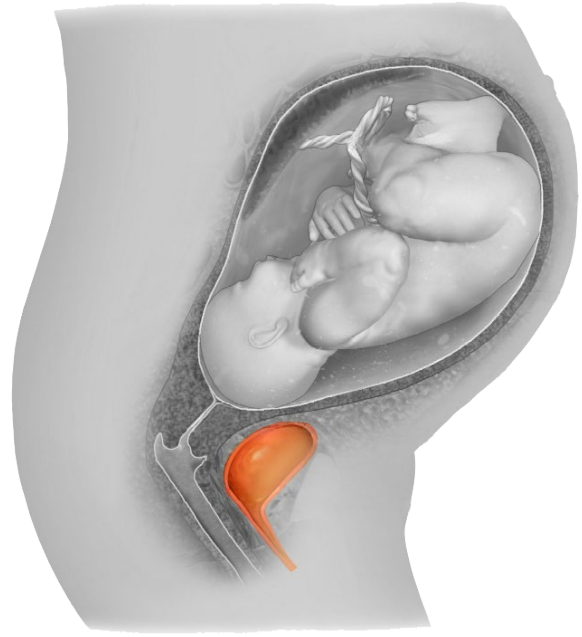
fetus in the uterus

fetus in the uterus

During the first eight weeks, the maturing child is called an embryo, after which it is called a fetus. In the last few weeks before birth, the unborn child again gains a lot of weight. The bones of the skull have not yet grown together, so that the fetus fits better through the birth canal. Only in the course of the first two years do they grow together completely.



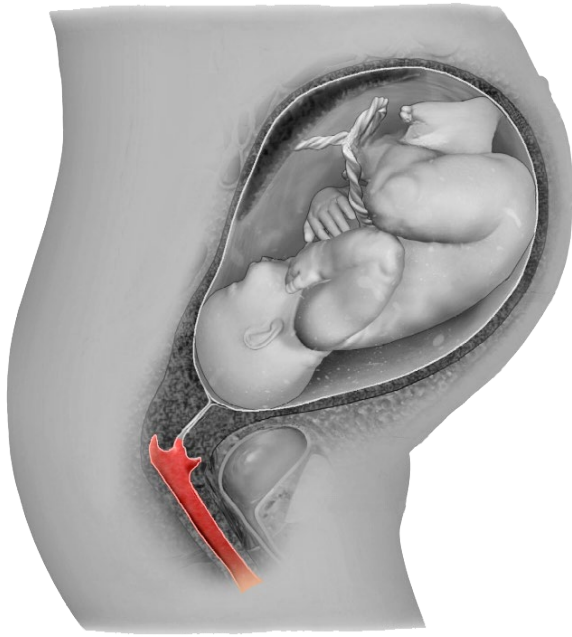
urinary bladder and
urethra



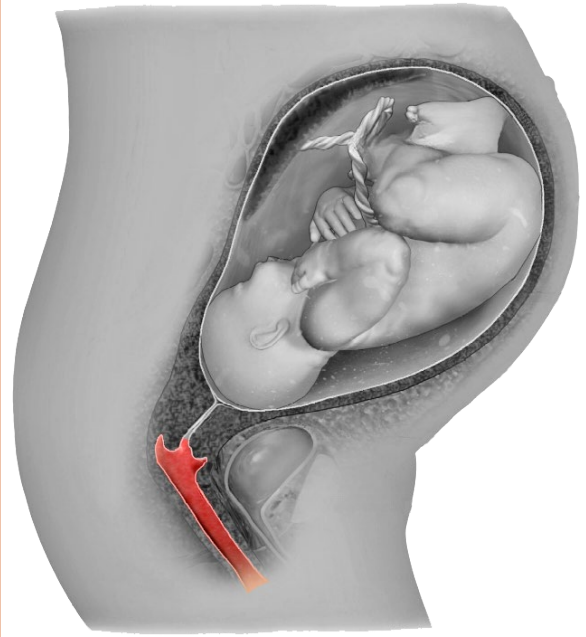
urinary bladder and
urethra

urinary bladder and urethra

The uterus lies over the urinary bladder. The fetus thus presses on the urinary bladder and the pregnant woman therefore has to go to the toilet more often.



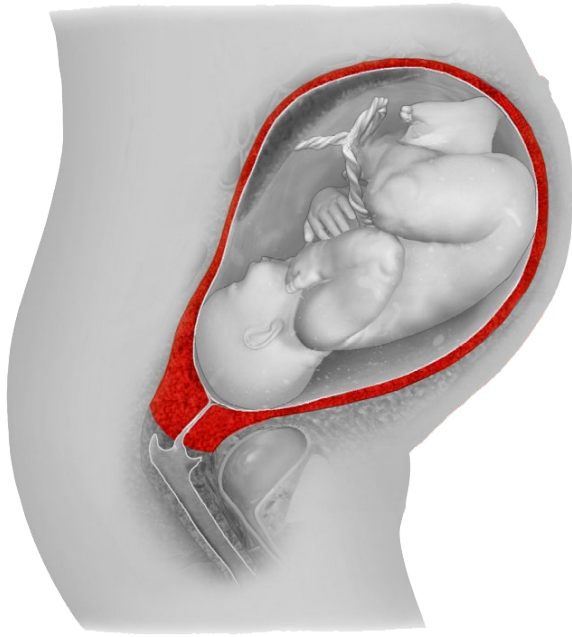
vagina



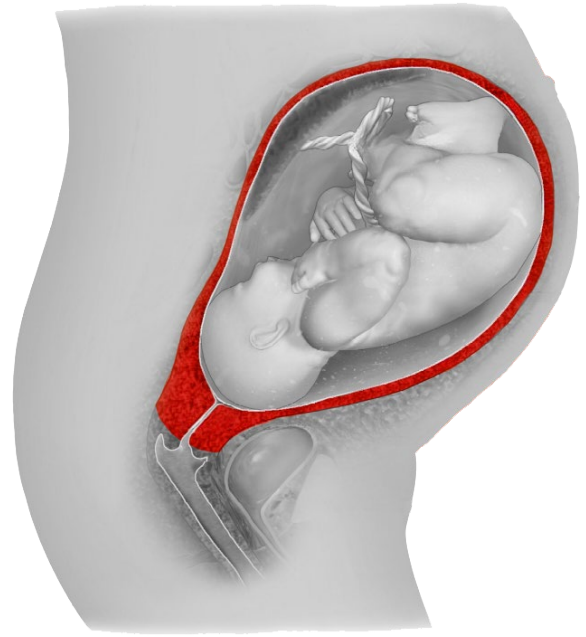
vagina

vagina

During pregnancy, the entire intimate area is better supplied with blood, including the vagina. At birth, the vagina forms the birth canal and expands.



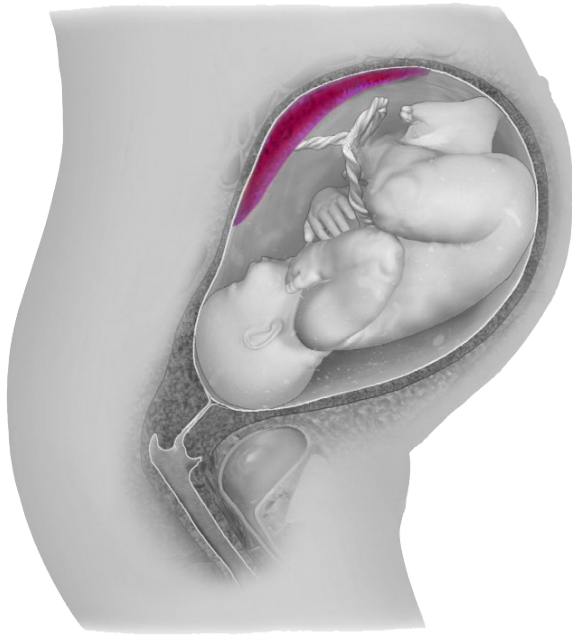
uterus



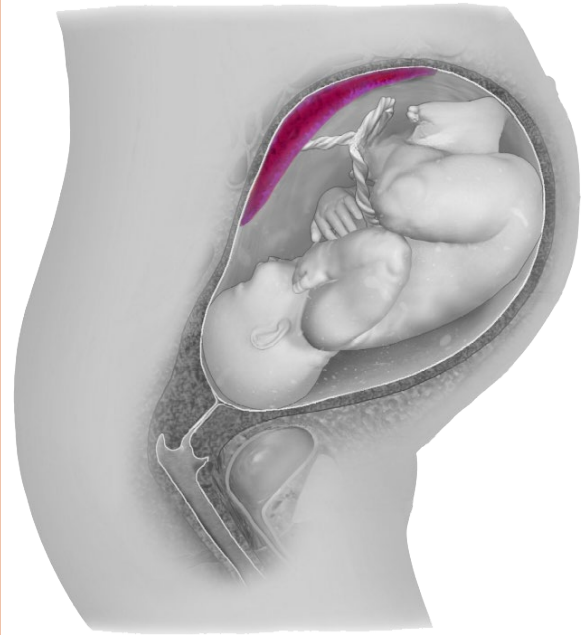
uterus

uterus

The uterus looks like an upside down pear. It gets bigger and bigger as the pregnancy progresses. Shortly before birth, it reaches below the costal arch.



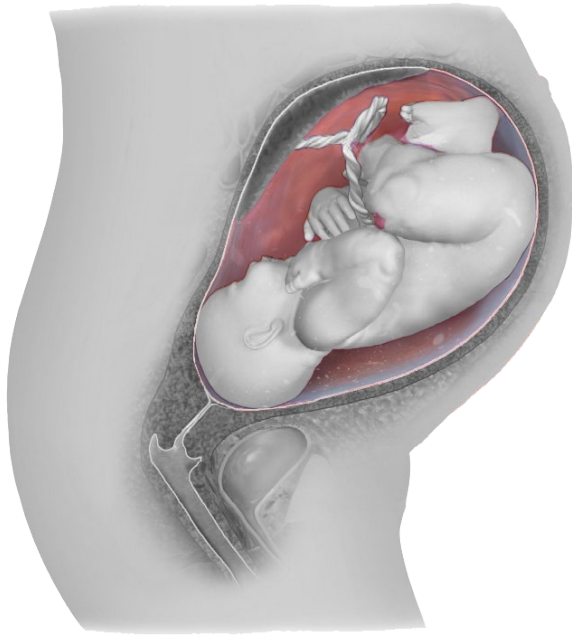
placenta



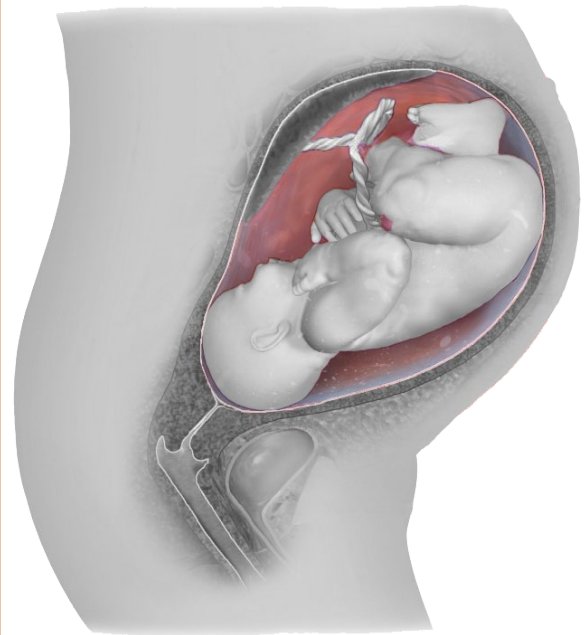
placenta

placenta

The placenta is formed only when a woman is pregnant. It is located on the wall of the uterus. The placenta is expelled after the baby is born. At the end of pregnancy, the placenta weighs approximately 500 - 600 grams and has a diameter of 15 - 20 cm.



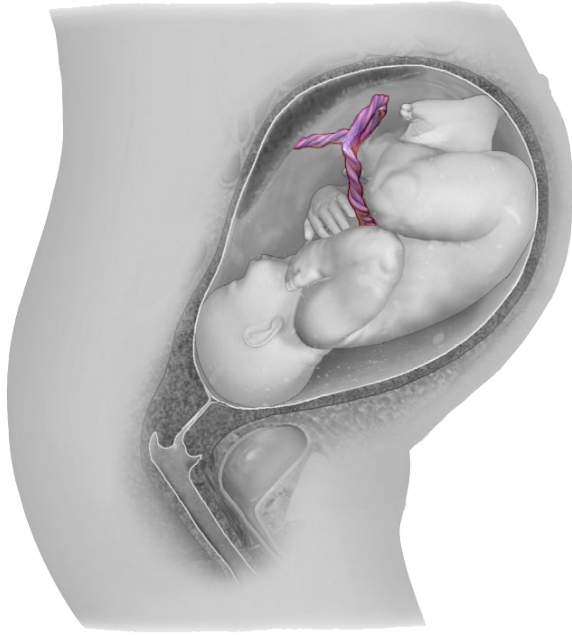
amniotic sac with
amniotic fluid



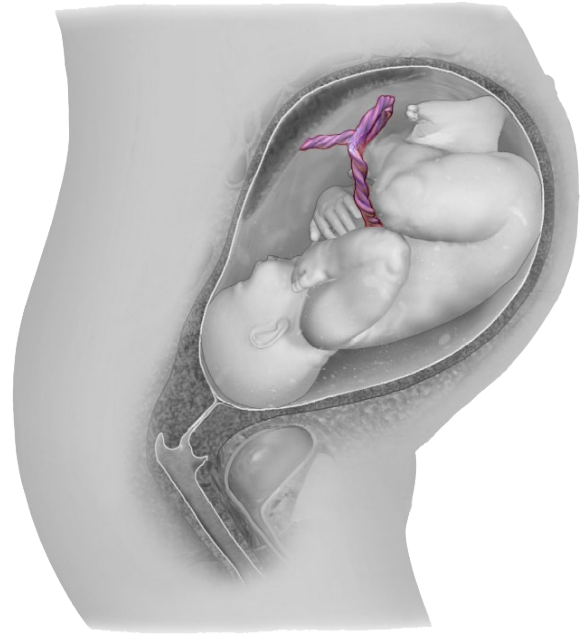
amniotic sac with
amniotic fluid

amniotic sac with amniotic fluid

The amniotic sac is filled with amniotic fluid. The growing child can swim around freely in the amniotic sac. However, it is still connected to the mother with the umbilical cord. This allows the little creature to build up its muscles and skeleton evenly. The unborn child is also protected from bumps.



umbilical cord



umbilical cord

umbilical cord

At birth, the umbilical cord is about 50 - 60 cm long and 1.5 - 2 cm in diameter. The umbilical cord supplies the unborn baby with oxygen and all vital nutrients. It also transports waste products such as carbon dioxide to the placenta.



fetus



fetus

fetus

In the 33rd - 34th week of pregnancy, an unborn child should turn over so that it lies head down. Head first makes it easier for the baby to be born. If the baby has not turned by the time it is born, an attempt will be made to turn the growing child or a cesarean section will be considered.



newborn



newborn

newborn

A baby after birth is called a newborn. A newborn weighs around 3 kilos. Girls are often a little lighter than boys. Now the baby is no longer supplied by the umbilical cord. This is cut through. The baby unfolds its lungs and has to breathe on its own. It is best nourished with breast milk. The first breast milk produced is called colostrum and is important for the child's immune system.



slightly older baby



slightly older baby

slightly older baby

In the first few weeks, the newborn baby recovers from the exhausting birth. It now experiences the world into which it was born with all its senses. At close range (about 30 cm), the child's vision is relatively sharp. But the distance vision is still blurred. Every two to three hours, the baby asks for food.

Quellen

Texte

[Schwangerschaft – Wikipedia](#)

[Beckenendlage \(hebammenzentrum.at\)](#)

[Gebärmutter – Babys Höhle während der Schwangerschaft | Medela](#)

[Plazenta – Wikipedia](#)

[Fruchtwasser: Aufgaben und Hintergrundwissen - NetDoktor.ch](#)

[Die Nabelschnur | LILLYDOO Magazin](#)

[Entwicklungsstadien des Fötus - Gesundheitsprobleme von Frauen - MSD Manual Ausgabe für Patienten \(msdmanuals.com\)](#)

[Neugeborenes – Wikipedia](#)

[Ihr Baby in der ersten Lebenswoche | Neugeborene | swissmom](#)

Bilder

[A Pregnant Woman in Long Dress Standing on Green Grass Field · Free Stock Photo \(pexels.com\)](#)

[BruceBlaus](#). When using this image in external sources it can be cited as: Blausen.com staff (2014).

"[Medical gallery of Blausen Medical 2014](#)". WikiJournal of Medicine 1

(2). DOI:[10.15347/wjm/2014.010](#). ISSN [2002-4436](#)., [Blausen 0747 Pregnancy](#), Bild gedreht, Beschriftung entfernt, schwarz/weiß eingefärbt, einzelne anatomische Teile farbig draufgelegt, [CC BY 3.0](#)

Ernest F, [HumanNewborn](#), Hintergrund teilweise entfernt, [CC BY-SA 3.0](#)

[Foto zum Thema baby in blauen unterteilen, die auf weißer oberfläche liegen – Kostenloses Bild zu Grau auf Unsplash](#)