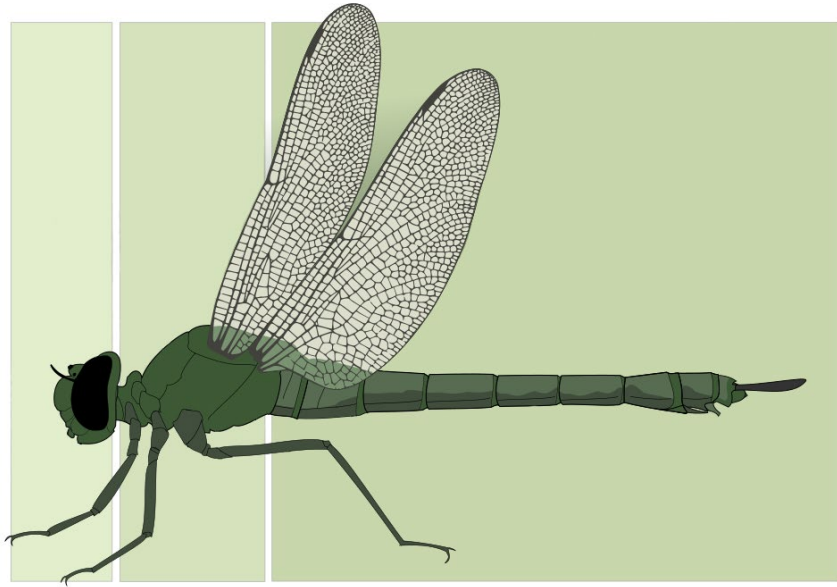




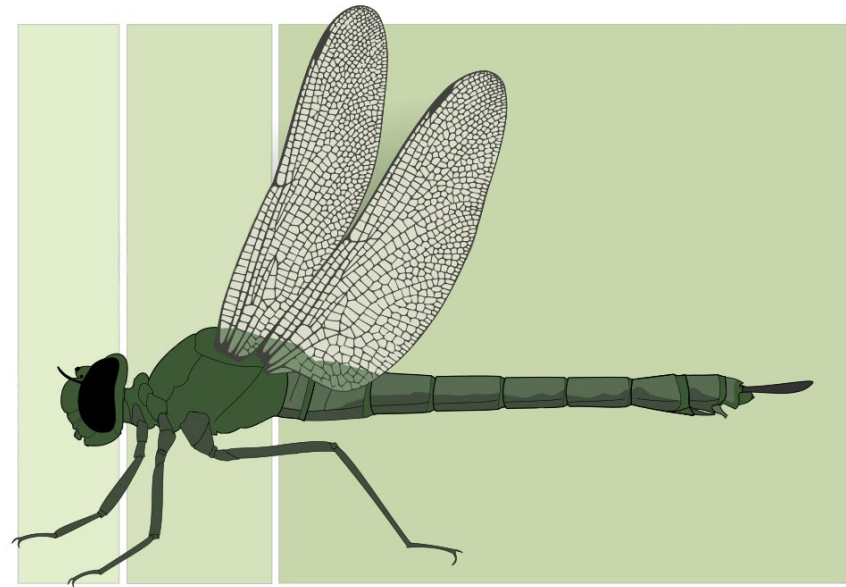
libellula



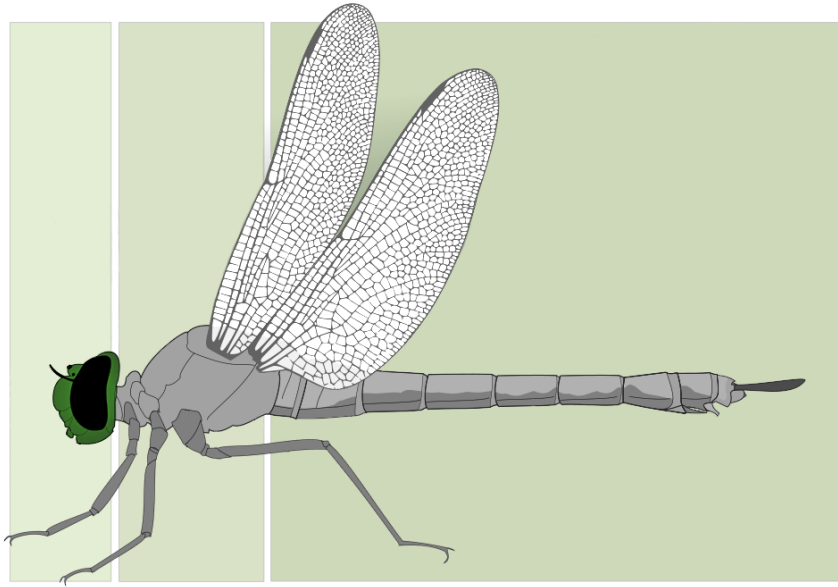
libellula



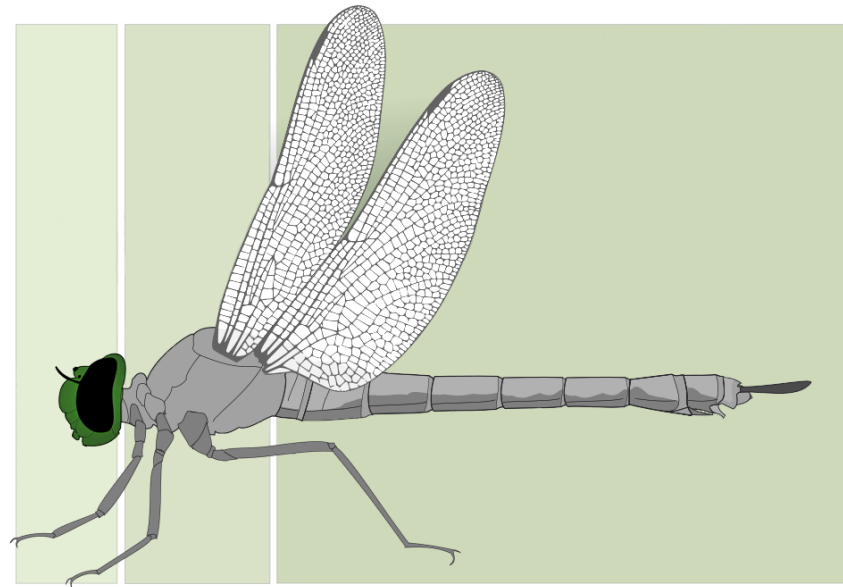
libellula femmina



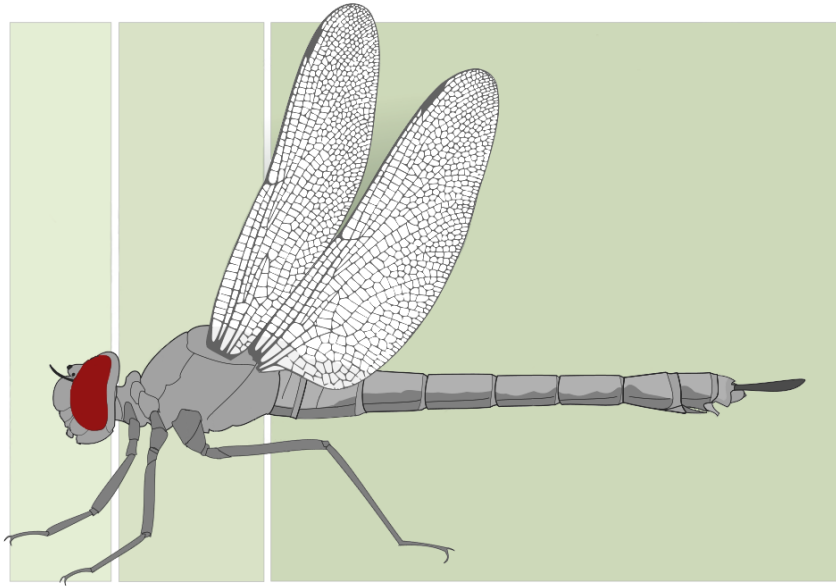
libellula femmina



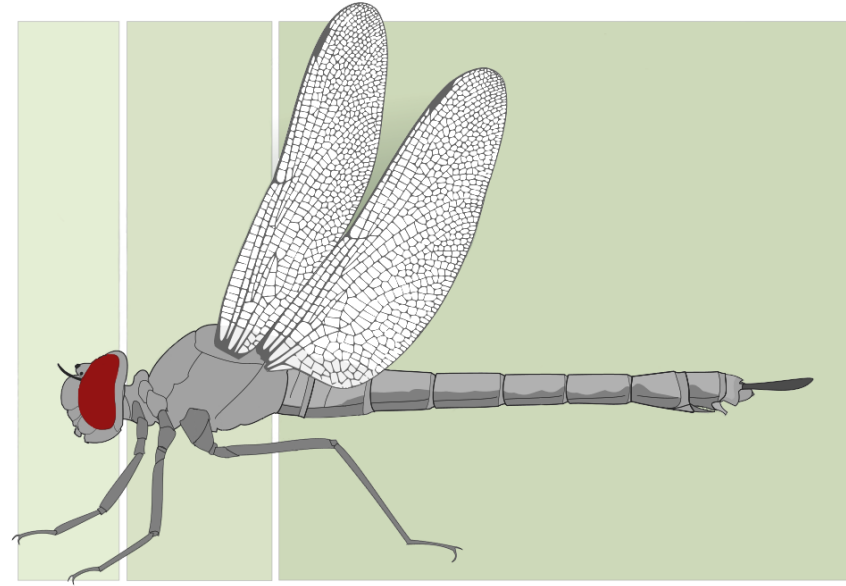
capo



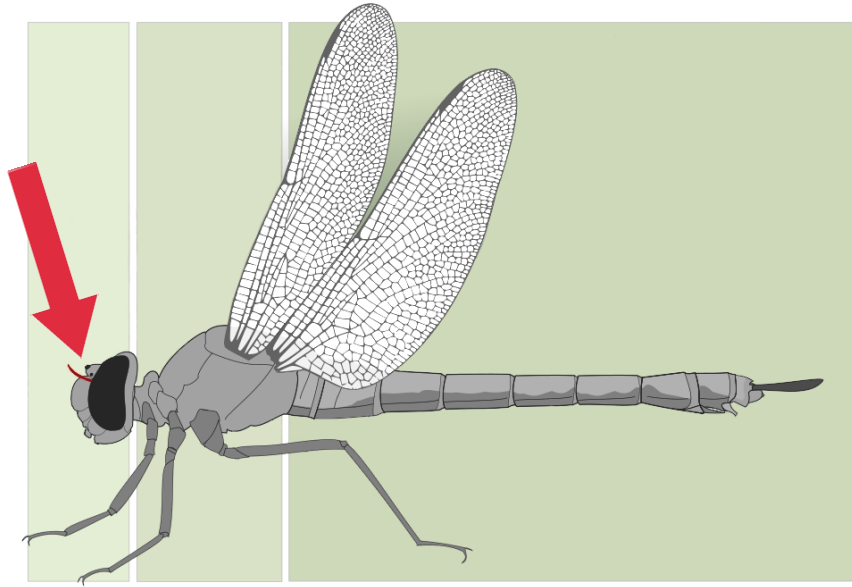
capo



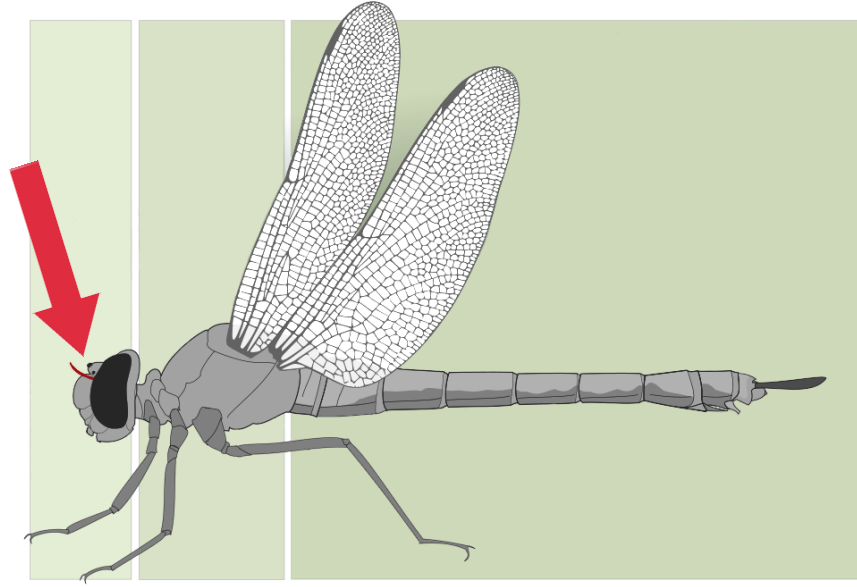
occhio composto



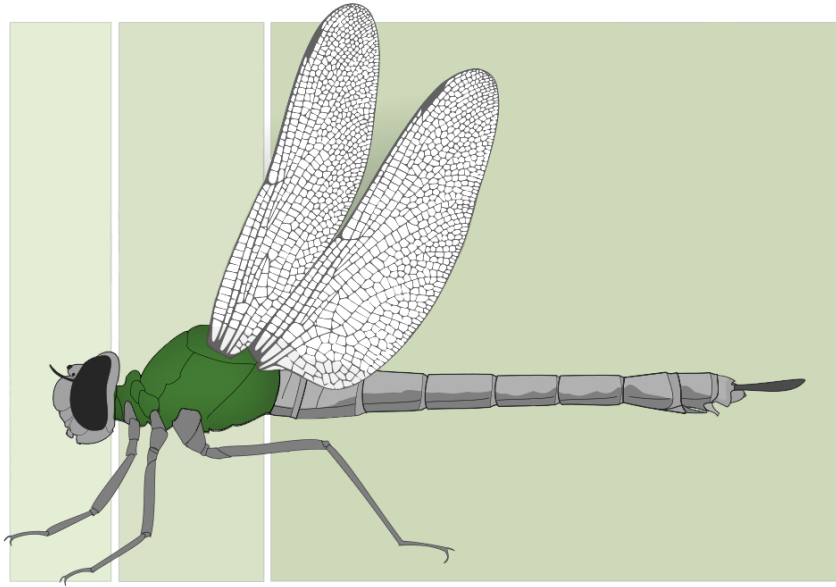
occhio composto



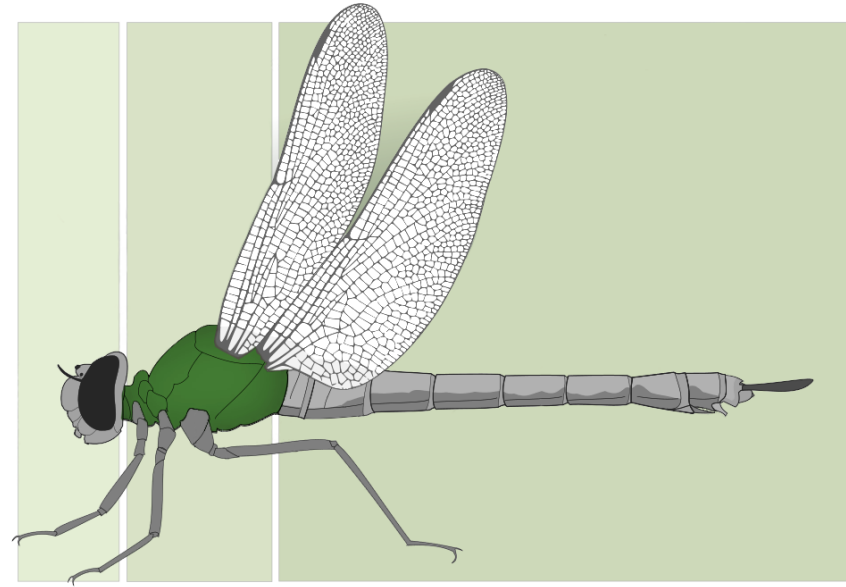
antenna



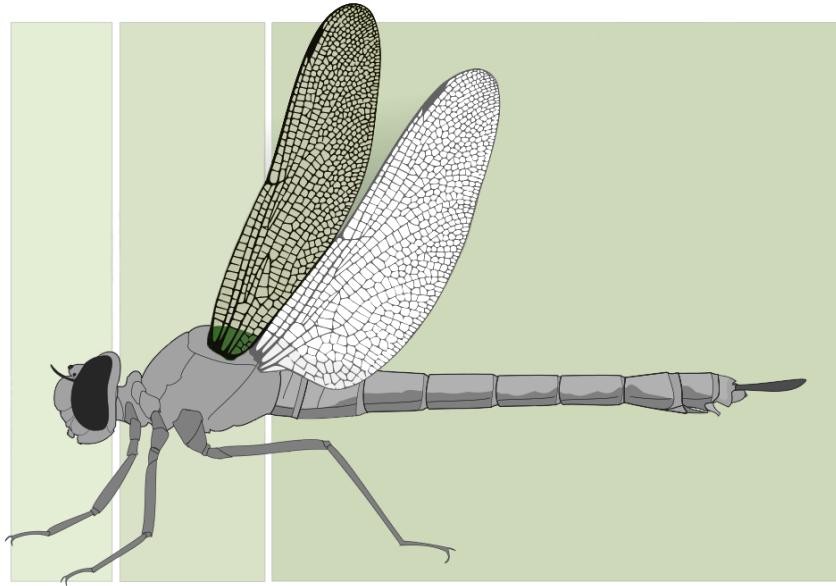
antenna



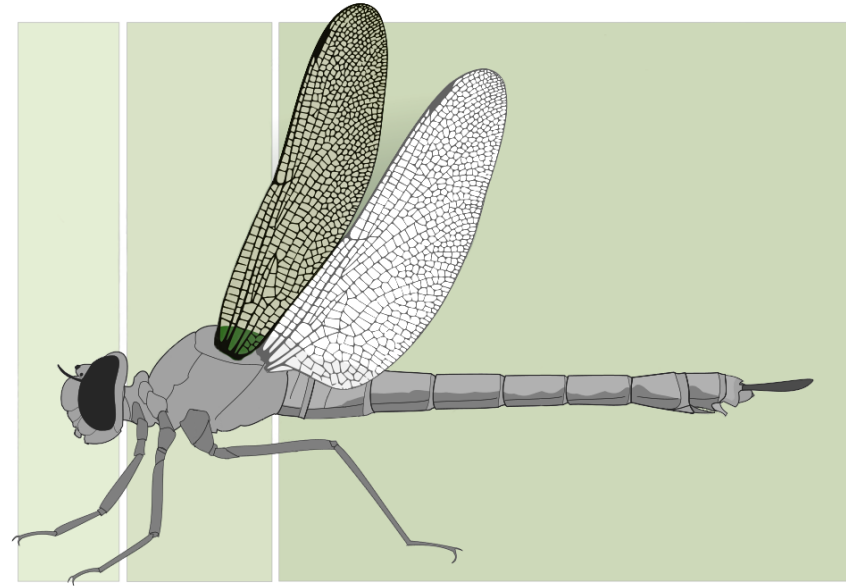
torace



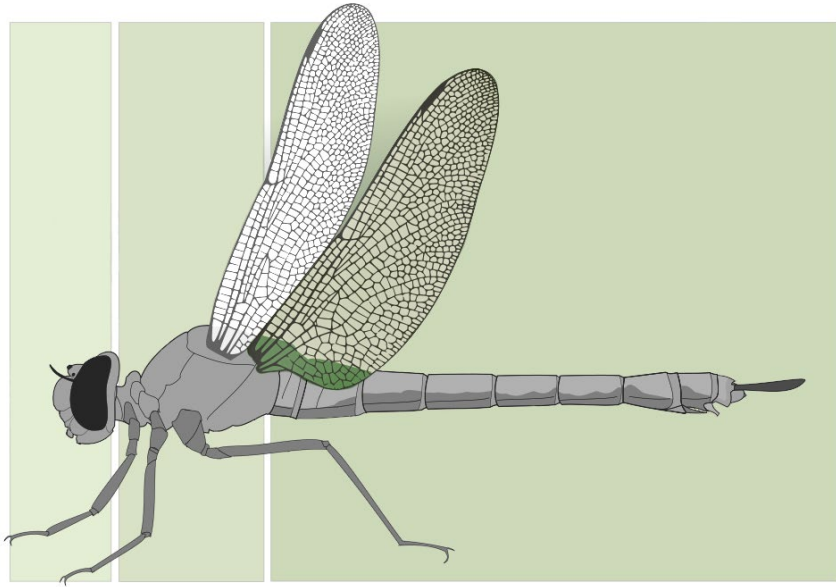
torace



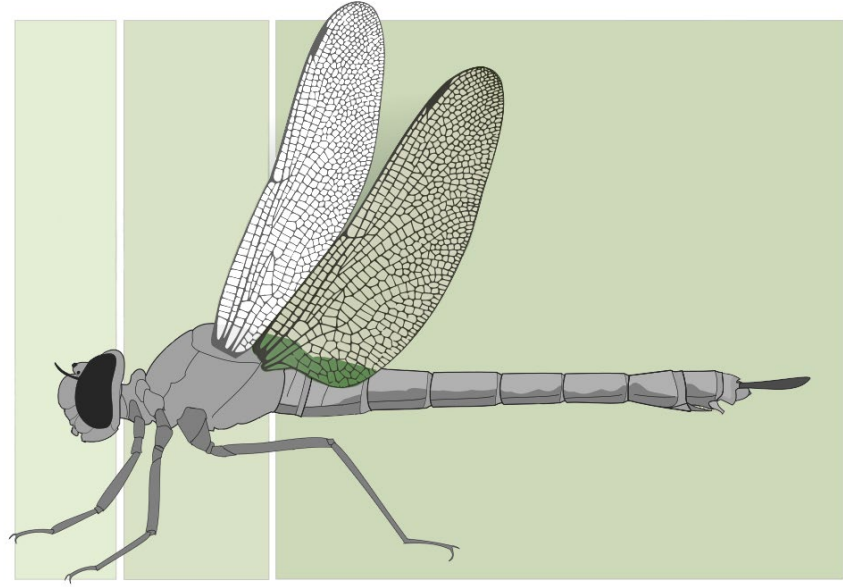
ala anteriore



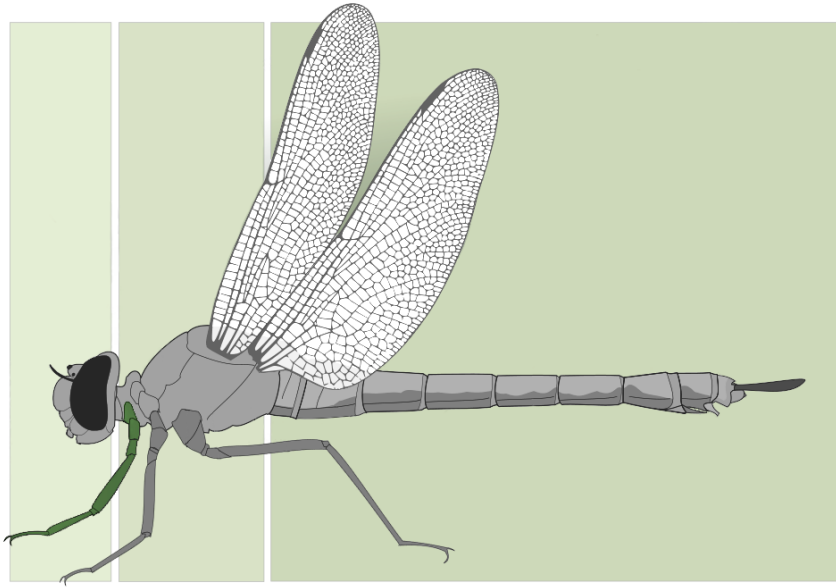
ala anteriore



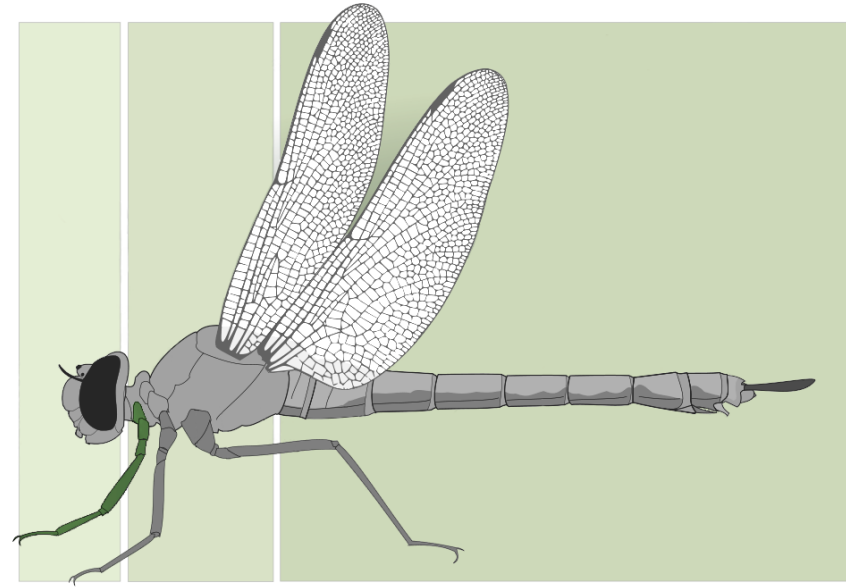
ala posteriore



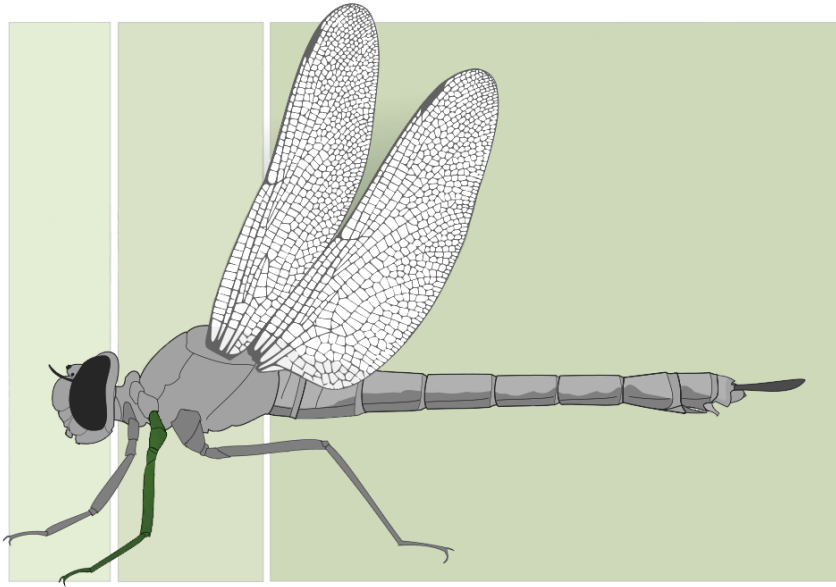
ala posteriore



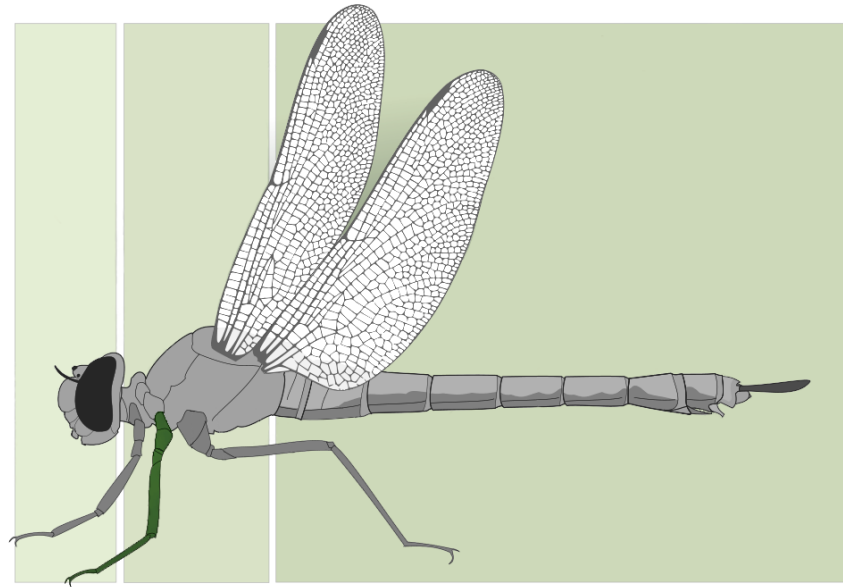
zampa anteriore



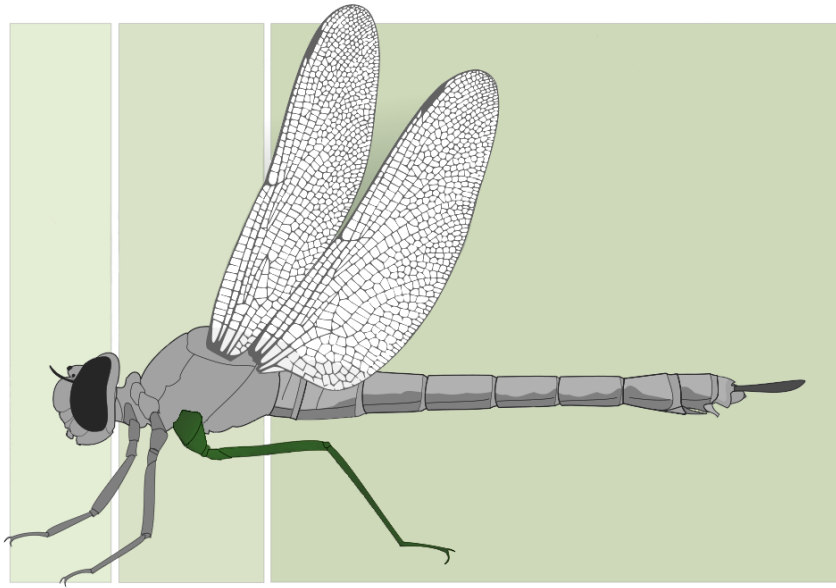
zampa anteriore



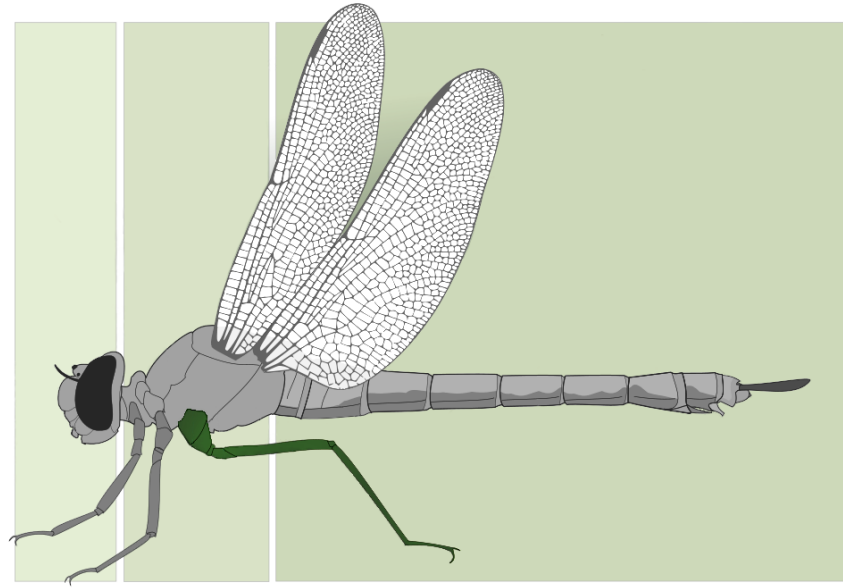
zampa mediana



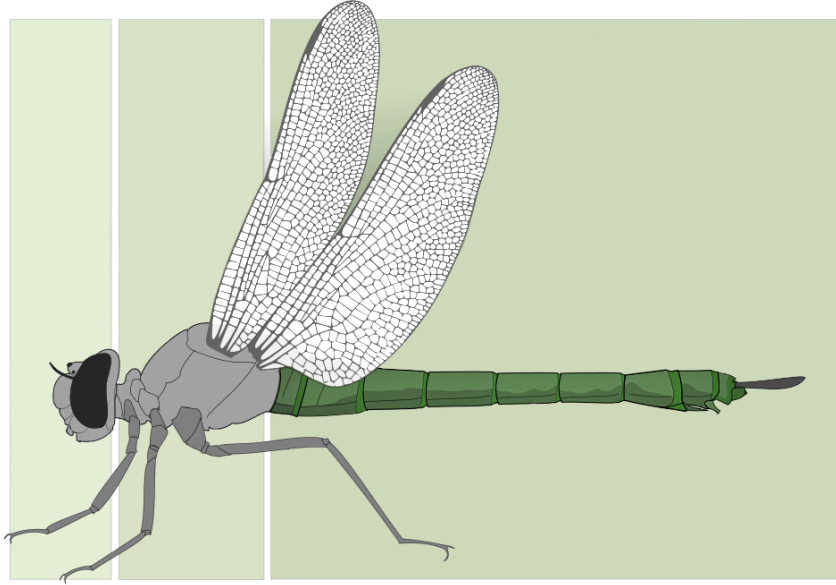
zampa mediana



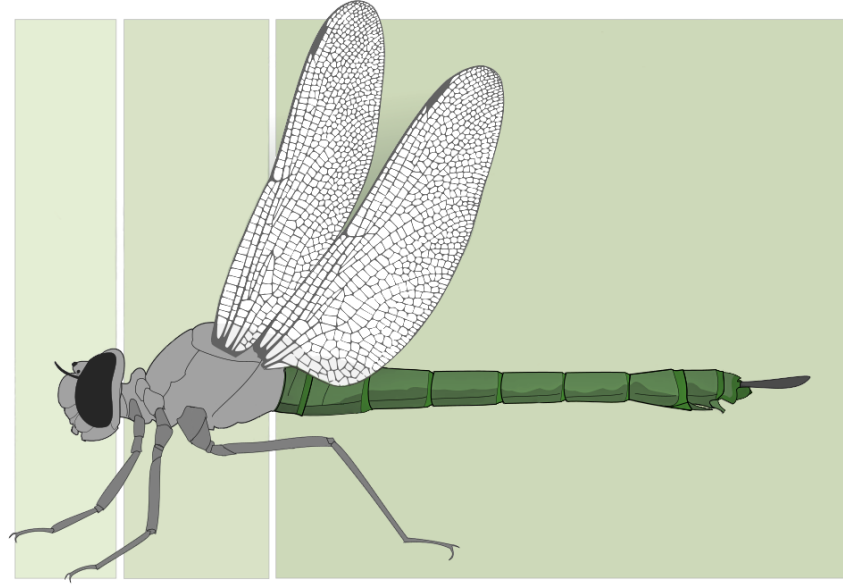
zampa posteriore



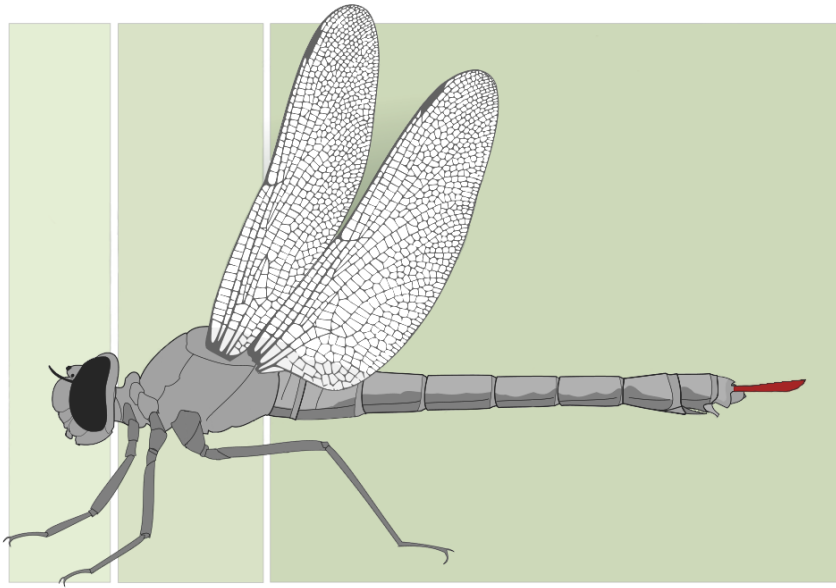
zampa posteriore



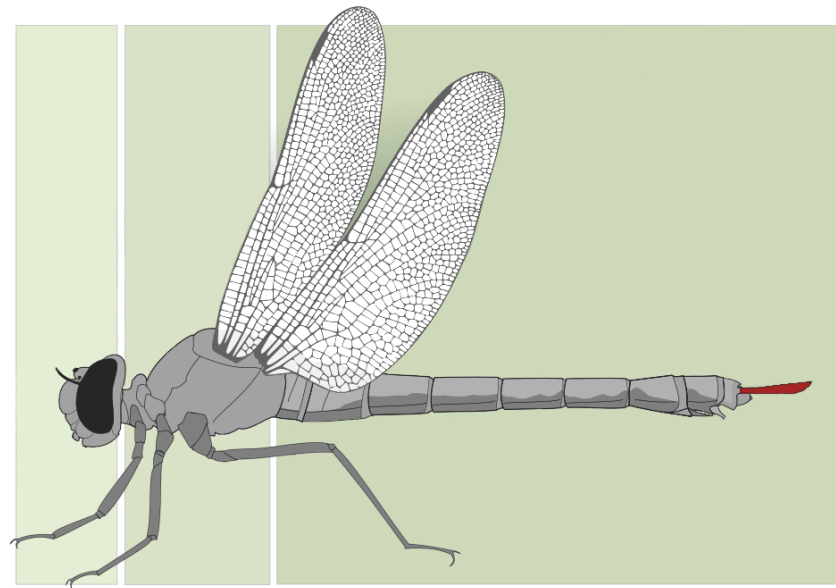
addome



addome



cercus



cercus

Quellen

[Dragonfly Damselfly Green - Free photo on Pixabay](#)

[M. A. Broussard](#), [Dragonfly anatomy](#), Beschriftung entfernt, männliche Libelle entfernt, weibliche Libelle schwarz/weiß eingefärbt und einzelne anatomische Teile farbig draufgelegt, [CC BY-SA 4.0](#)