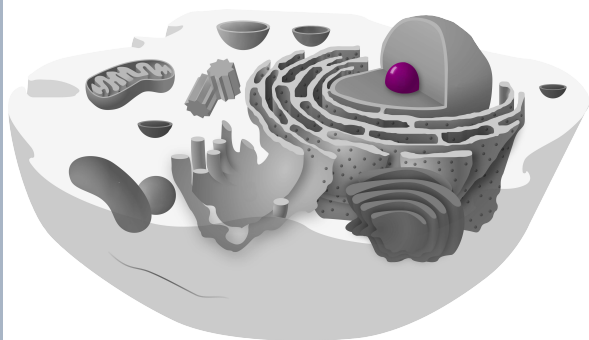




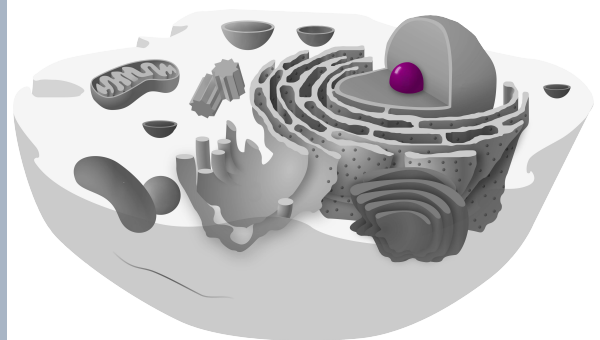
célula animal



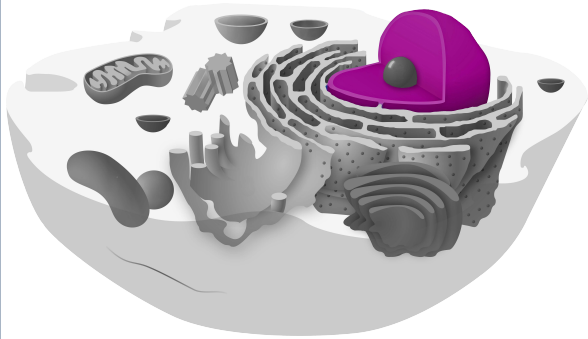
célula animal



nucléolo



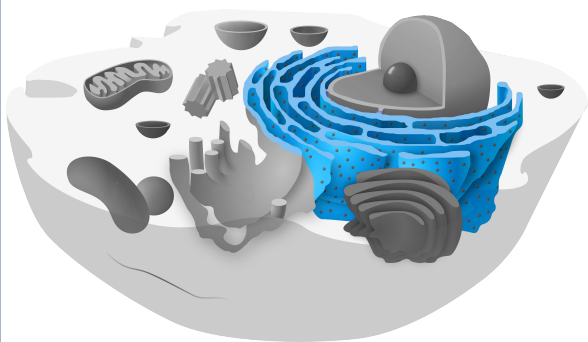
nucléolo



núcleo celular



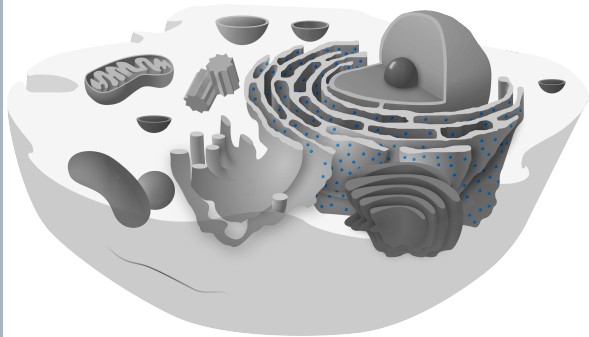
núcleo celular



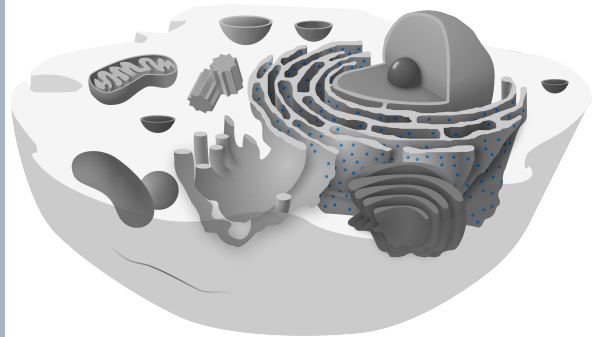
retículo
endoplasmático rugoso



retículo
endoplasmático rugoso



ribosomas



ribosomas



retículo
endoplasmático liso



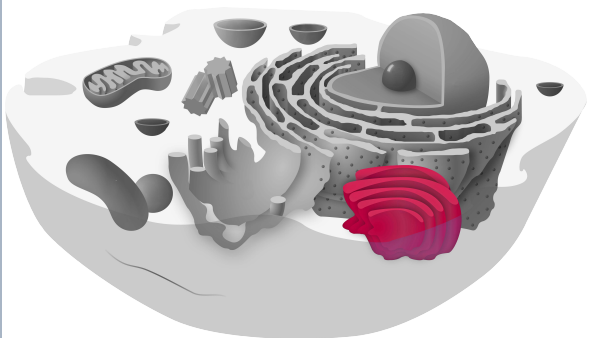
retículo
endoplasmático liso



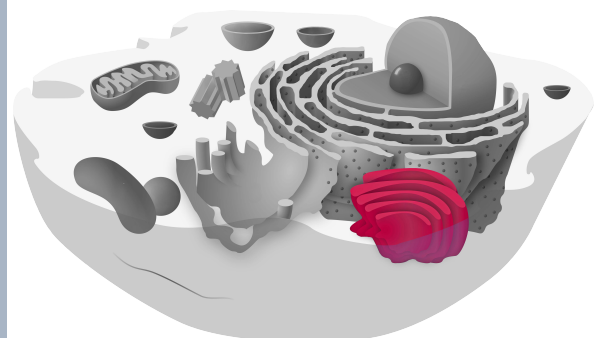
vesículas de secreción



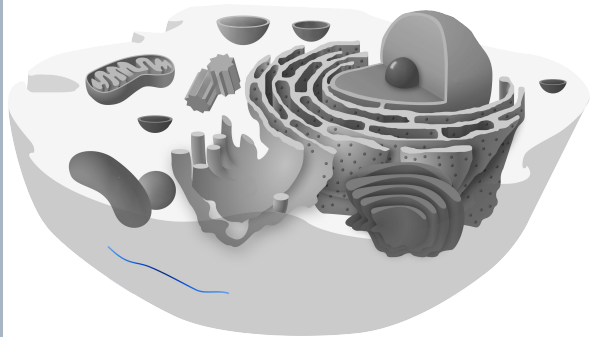
vesículas de secreción



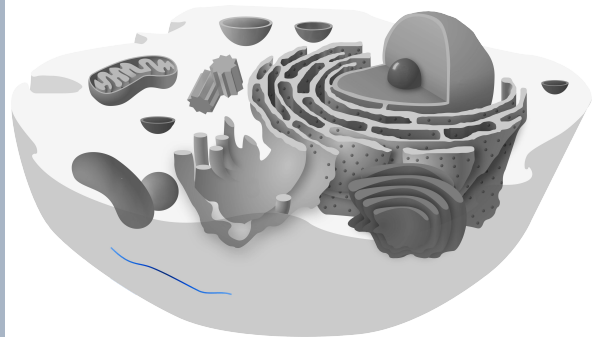
aparato de Golgi



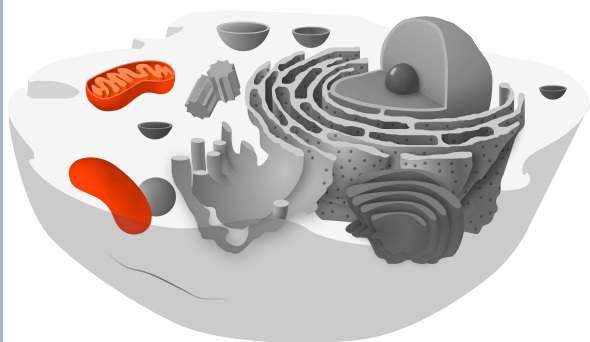
aparato de Golgi



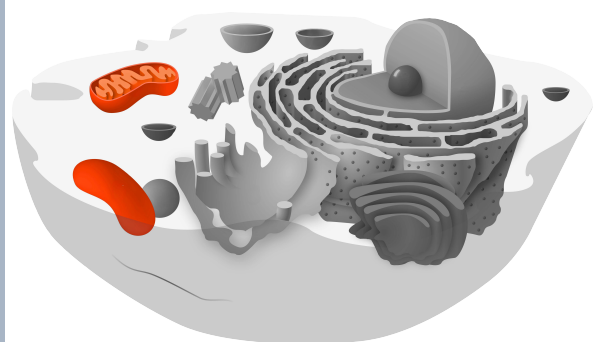
citoesqueleto



citoesqueleto



mitocondrias



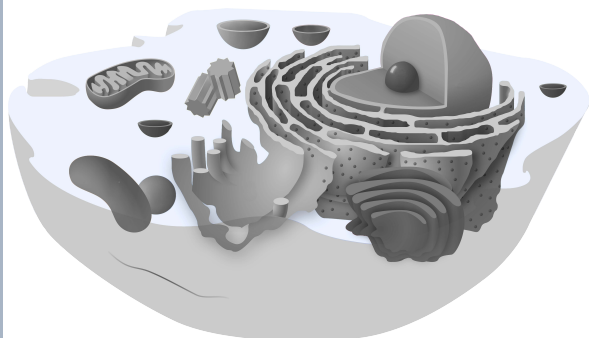
mitocondrias



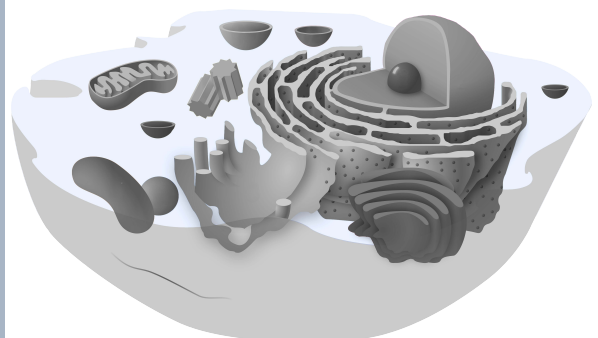
vacuolas



vacuolas



citosol



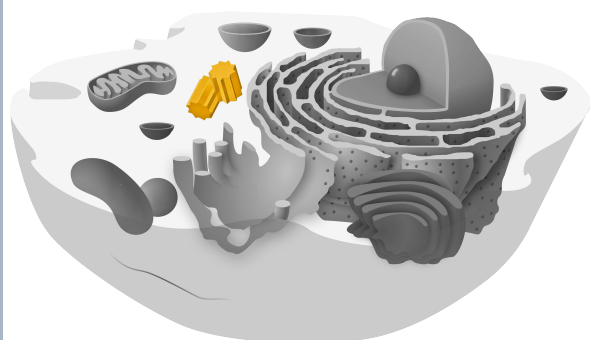
citosol



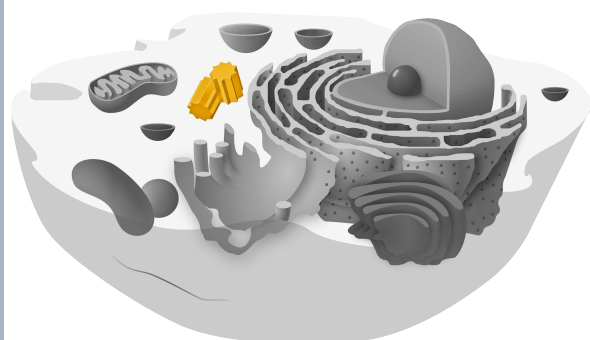
lisosoma



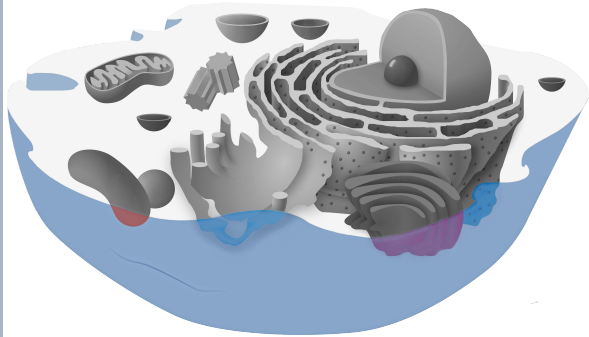
lisosoma



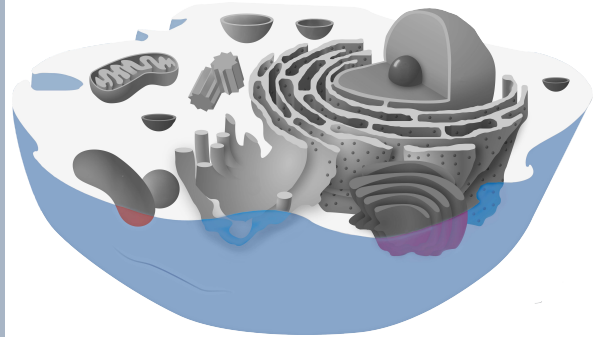
centríolos



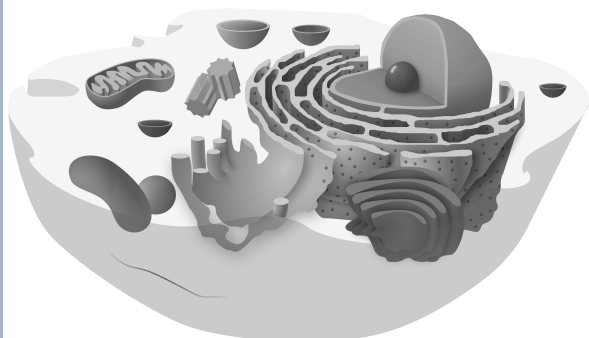
centríolos



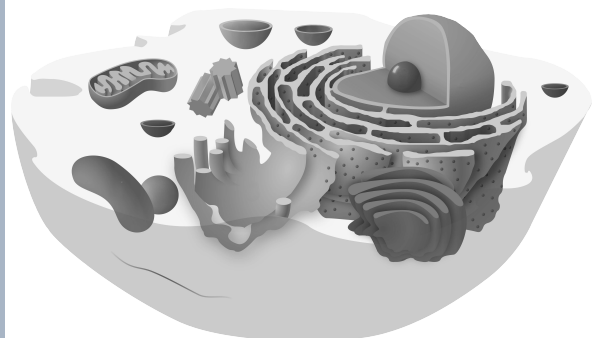
membrana plasmática



membrana plasmática



célula animal
blanco/negro



célula animal
blanco/negro

Quellen

[Kelvinsong](#), [Animal Cell](#), Beschriftung entfernt, , [CC0 1.0](#)

[Kelvinsong](#), [Animal Cell](#), Beschriftung entfernt, Zelle schwarz/weiß eingefärbt, einzelne Teile der Zelle farbig darauf gelegt, [CC0 1.0](#)

[Kelvinsong](#), [Animal Cell](#), Beschriftung entfernt, Zelle schwarz/weiß eingefärbt, [CC0 1.0](#)