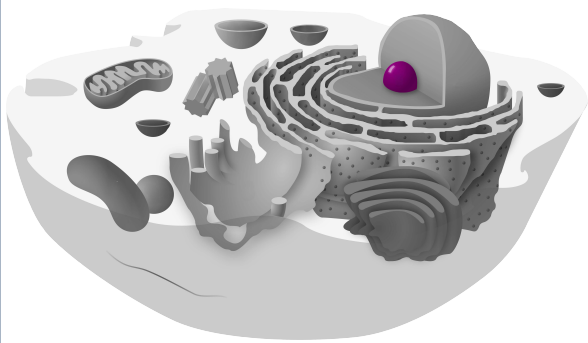




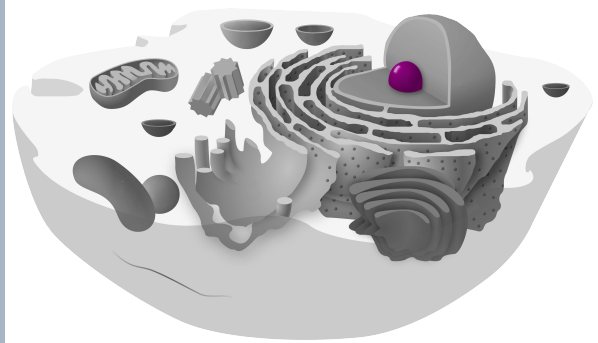
animal cell



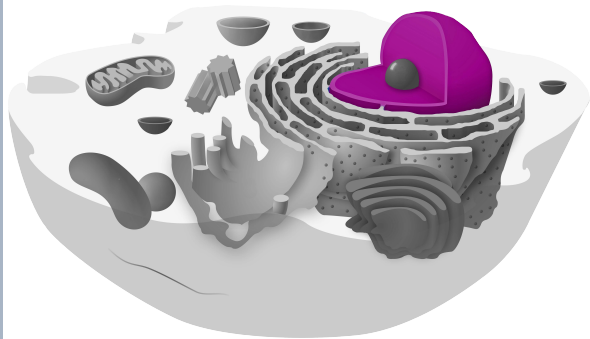
animal cell



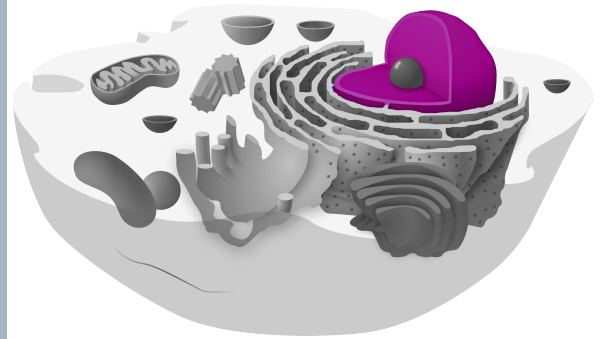
nucleolus



nucleolus



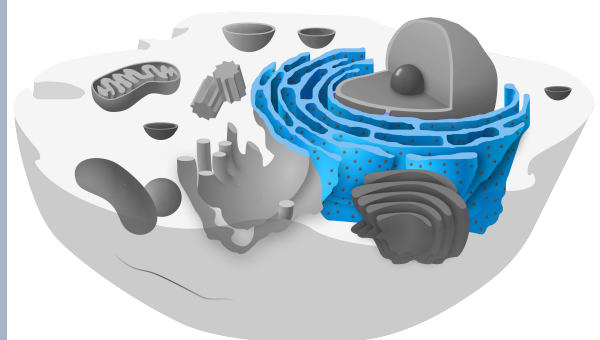
nucleus



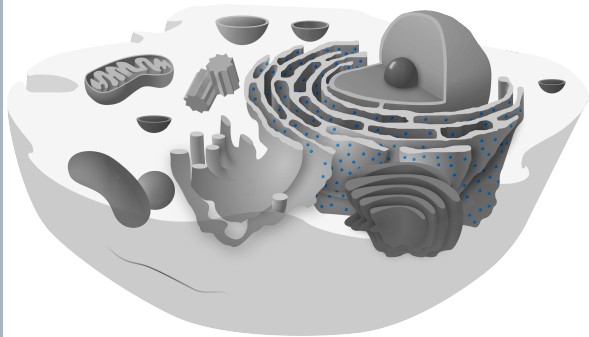
nucleus



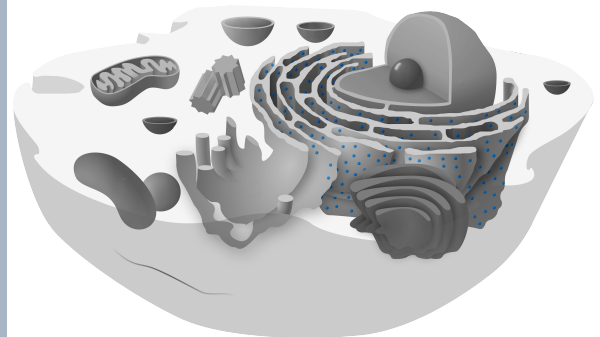
rough endoplasmic
reticulum



rough endoplasmic
reticulum



Ribosomes



ribosomes



smooth endoplasmic
reticulum



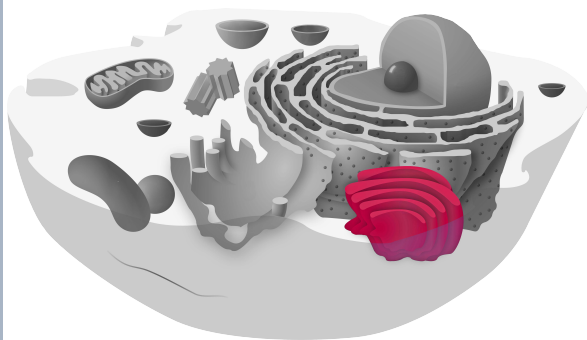
smooth endoplasmic
reticulum



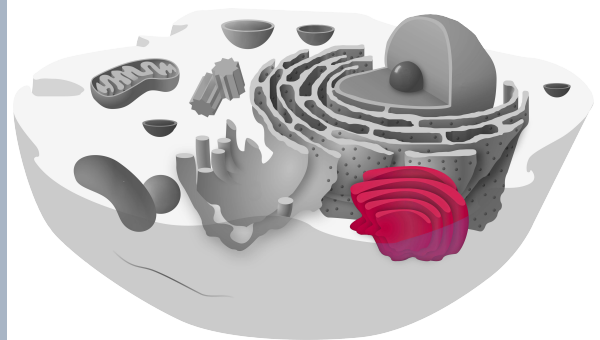
vesicles



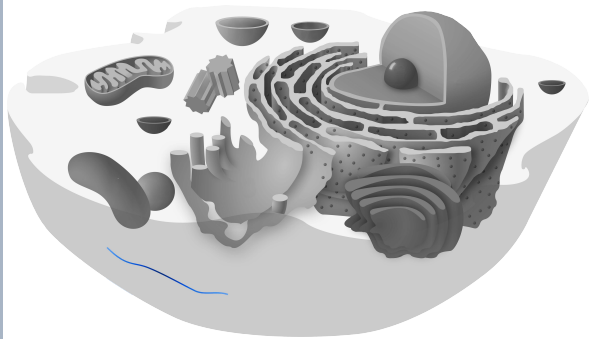
vesicles



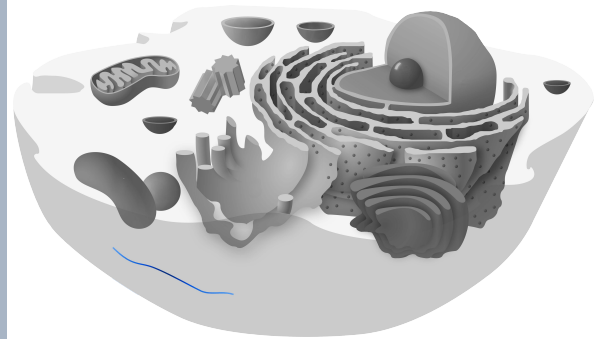
Golgi apparatus



Golgi apparatus



cytoskeleton



cytoskeleton



mitochondrions



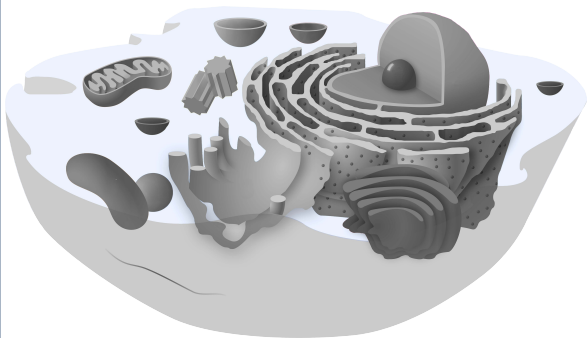
mitochondrions



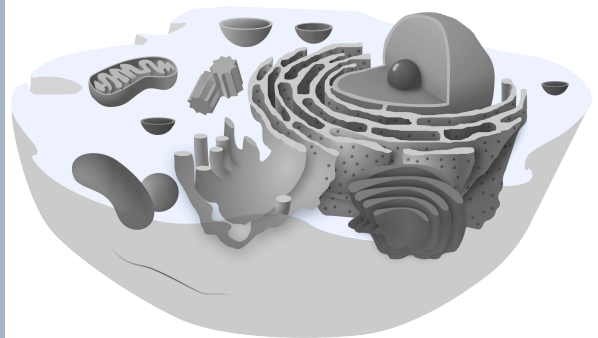
vacuoles



vacuoles



cytosol



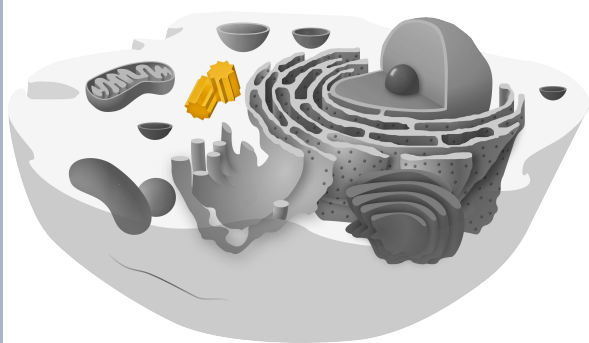
cytosol



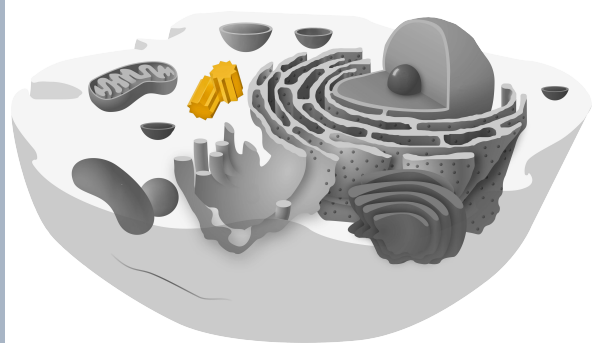
lysosome



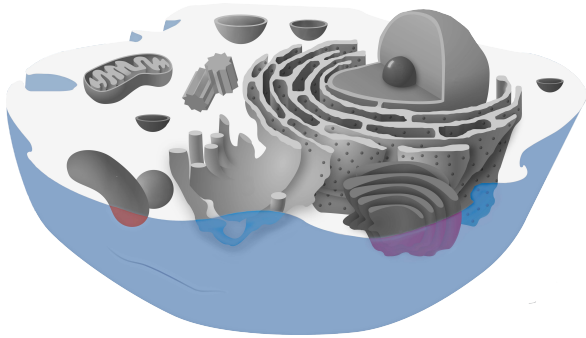
lysosome



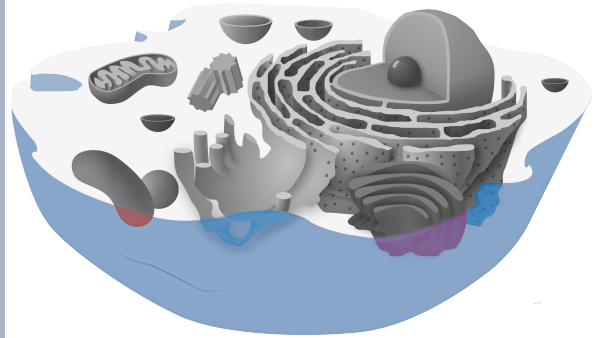
centrioles



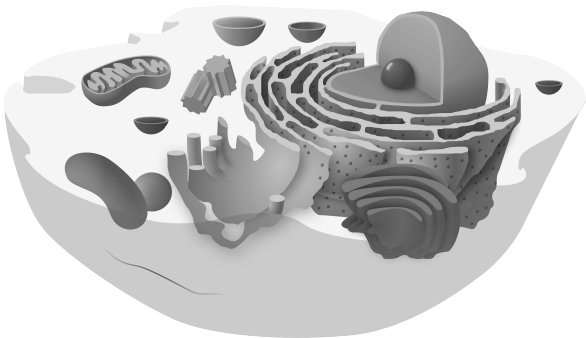
centrioles



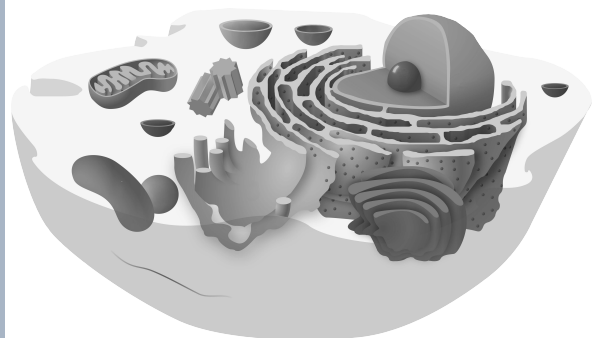
cell membrane



cell membrane



animal cell
black/white



animal cell
black/white

Quellen

[Kelvinsong](#), [Animal Cell](#), Beschriftung entfernt, , [CC0 1.0](#)

[Kelvinsong](#), [Animal Cell](#), Beschriftung entfernt, Zelle schwarz/weiß eingefärbt, einzelne Teile der Zelle farbig darauf gelegt, [CC0 1.0](#)

[Kelvinsong](#), [Animal Cell](#), Beschriftung entfernt, Zelle schwarz/weiß eingefärbt, [CC0 1.0](#)