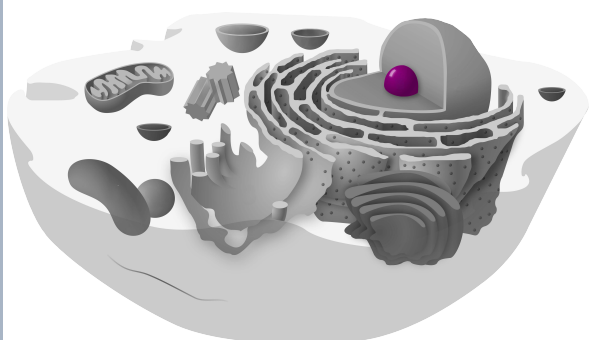




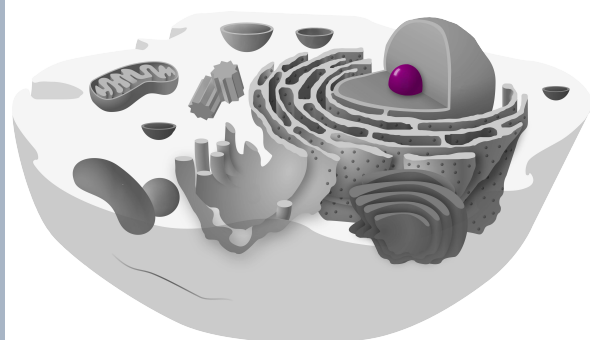
cellule animale



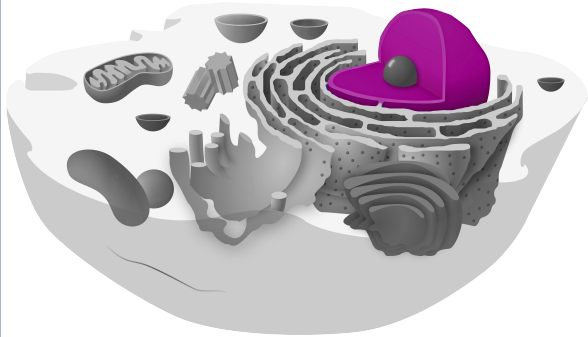
cellule animale



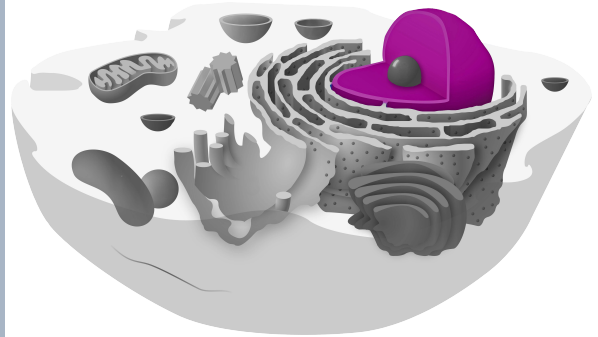
nucléole



nucléole



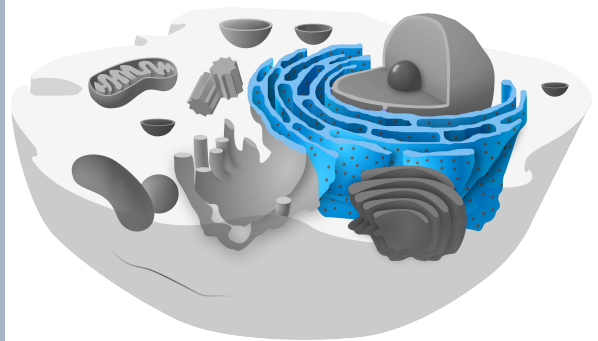
noyau



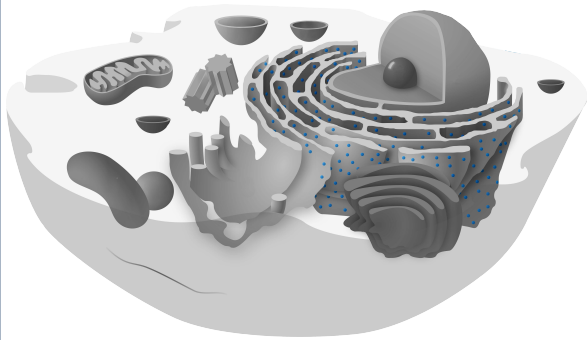
noyau



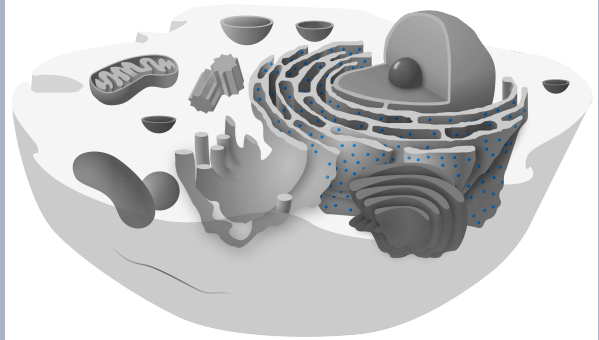
réticulum endoplasmique
rugueux



réticulum endoplasmique
rugueux



ribosomes



ribosomes



réticulum endoplasmique
lisse



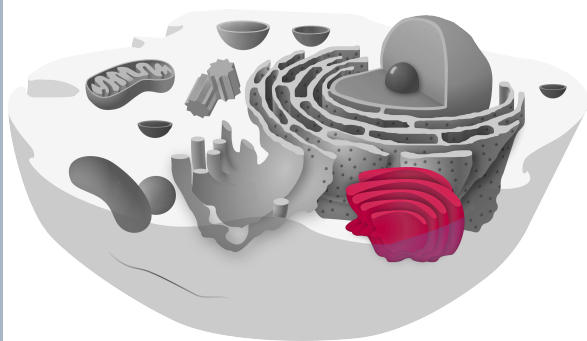
réticulum endoplasmique
lisse



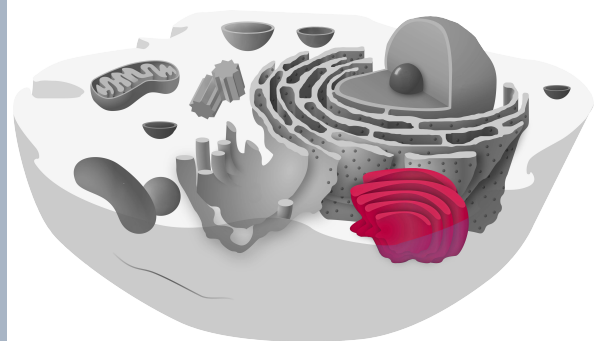
vésicules



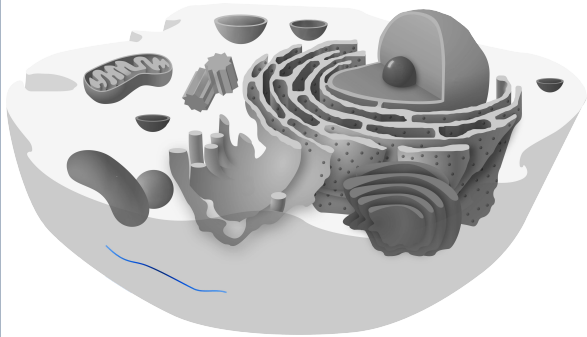
vésicules



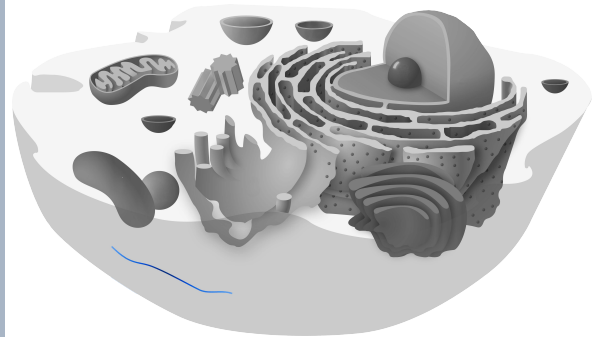
appareil de Golgi



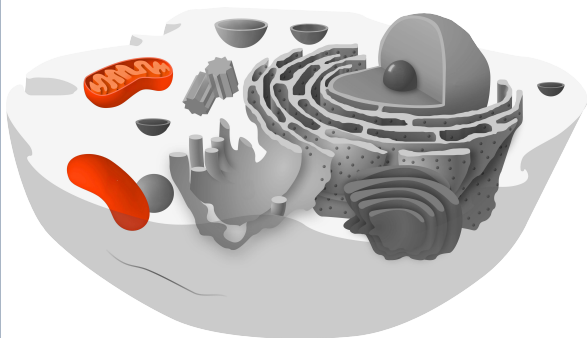
appareil de Golgi



cytosquelette



cytosquelette



mitochondries



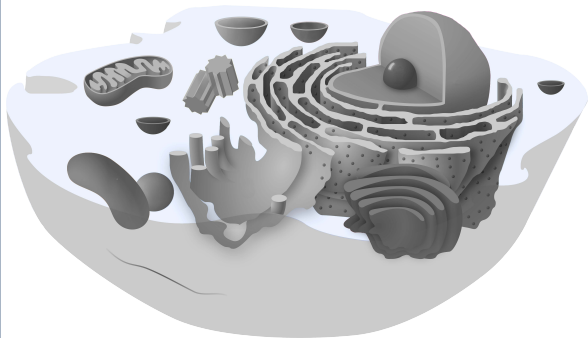
mitochondries



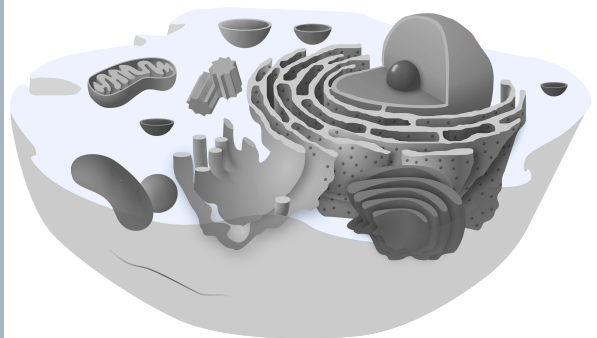
lysosomes



lysosomes



cytosol



cytosol



vacuole



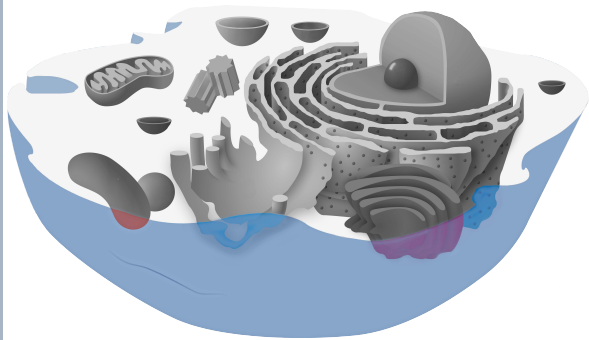
vacuole



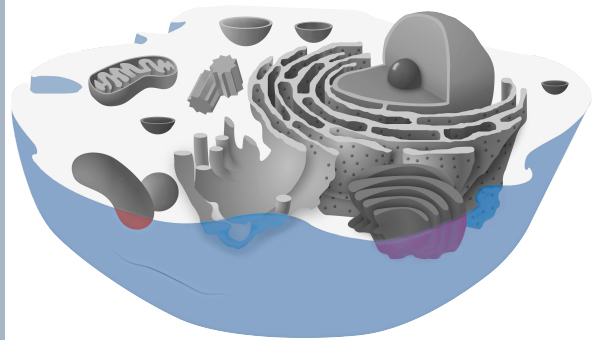
centrioles



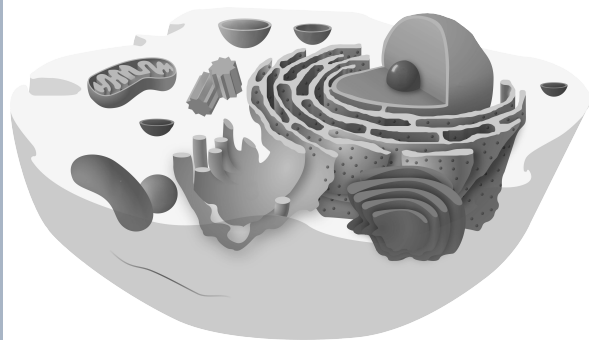
centrioles



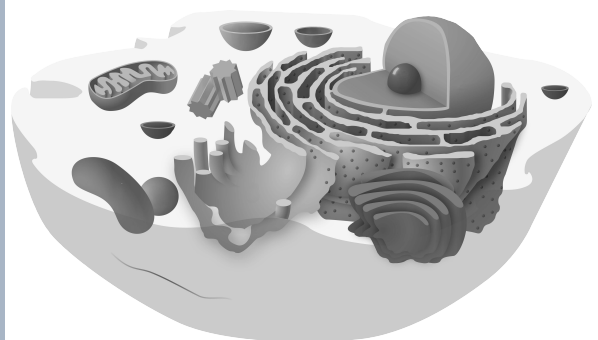
membrane plasmique



membrane plasmique



cellule animale
noir et blanc



cellule animale
noir et blanc

Quellen

[Kelvinsong](#), [Animal Cell](#), Beschriftung entfernt, , [CC0 1.0](#)

[Kelvinsong](#), [Animal Cell](#), Beschriftung entfernt, Zelle schwarz/weiß eingefärbt, einzelne Teile der Zelle farbig darauf gelegt, [CC0 1.0](#)

[Kelvinsong](#), [Animal Cell](#), Beschriftung entfernt, Zelle schwarz/weiß eingefärbt, [CC0 1.0](#)