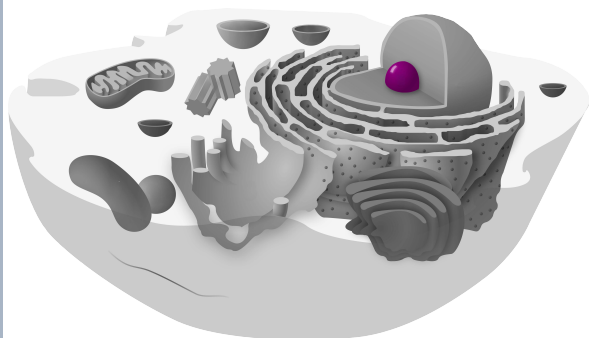




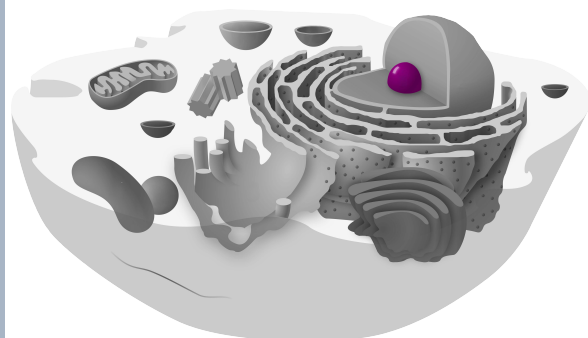
cellula animale



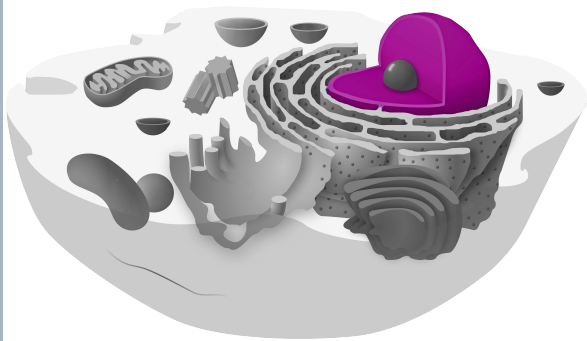
cellula animale



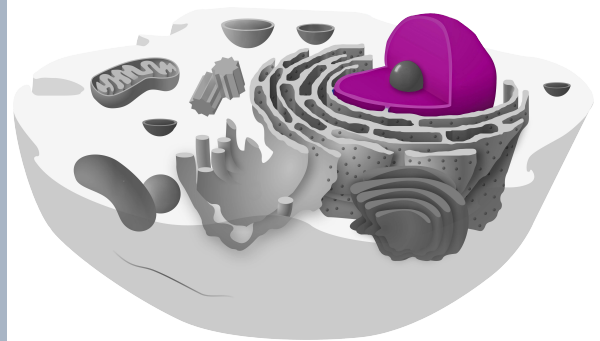
nucleolo



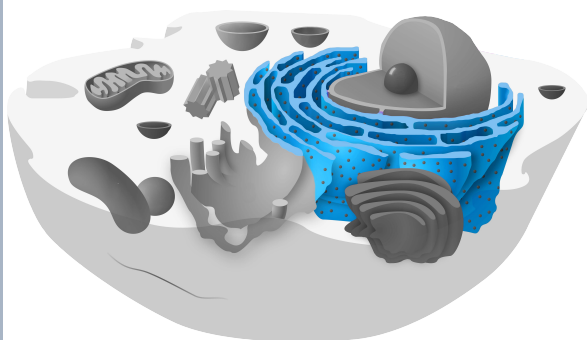
nucleolo



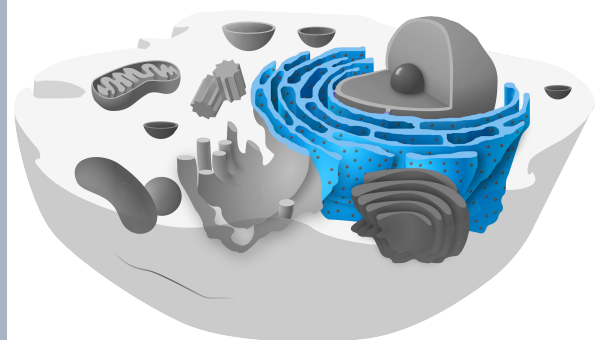
nucleo



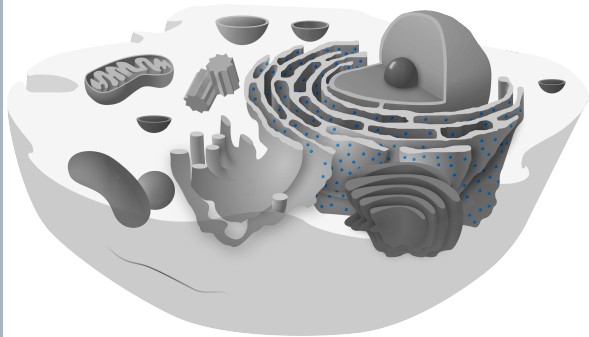
nucleo



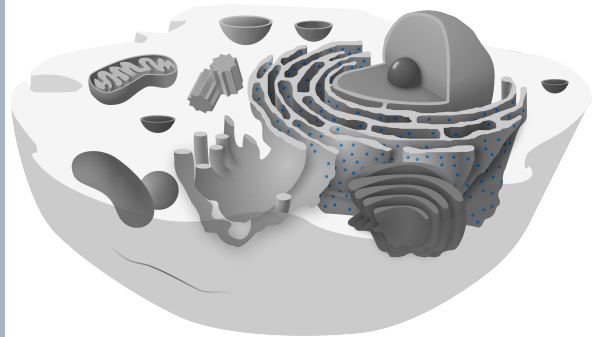
reticolo endoplasmatico
rugoso



reticolo endoplasmatico
rugoso



ribosomi



ribosomi



reticolo endoplasmatico
liscio



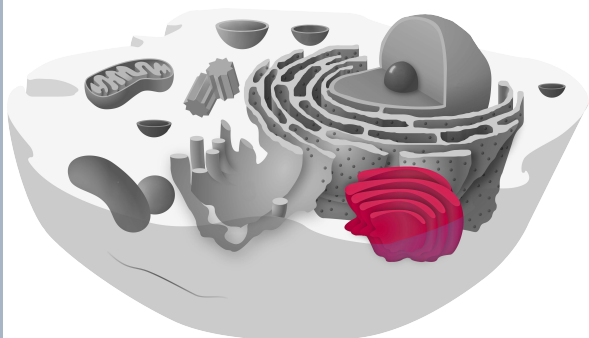
reticolo endoplasmatico
liscio



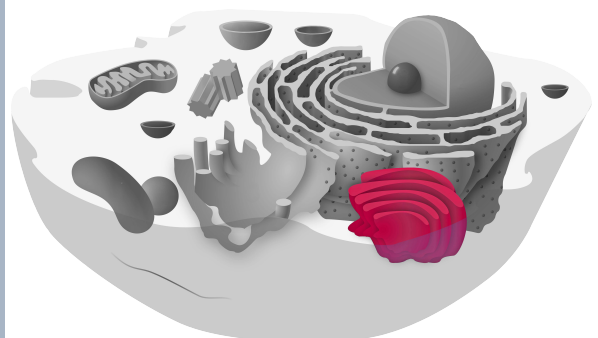
vescicole



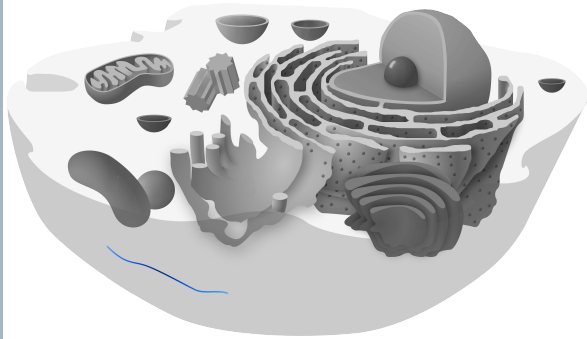
vescicole



apparato del Golgi



apparato del Golgi



citoscheletro



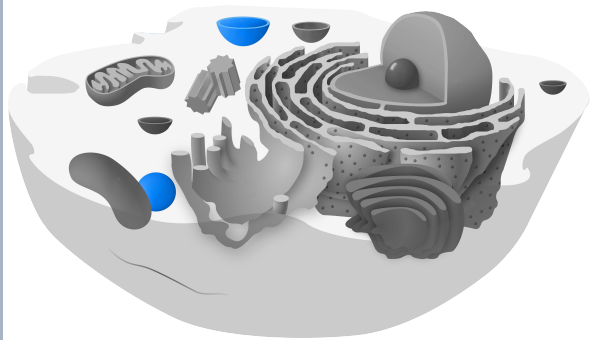
citoscheletro



mitocondri



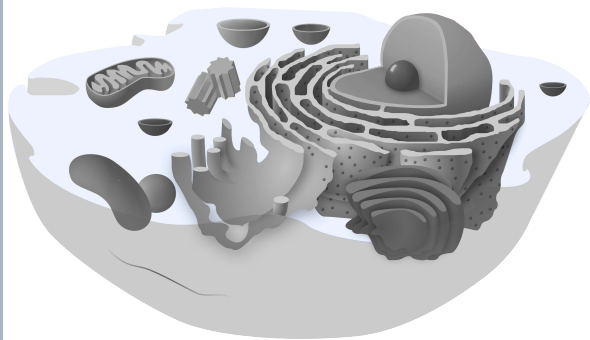
mitocondri



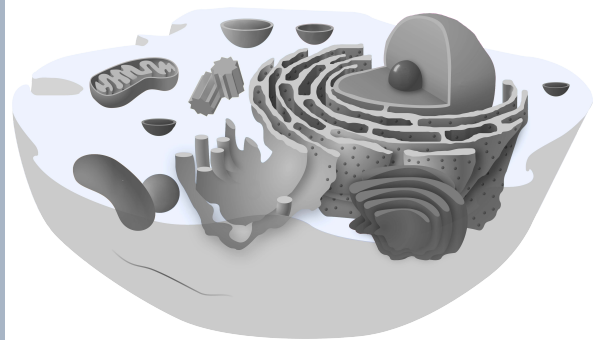
lisosomi



lisosomi



citosol



citosol



vacuolo



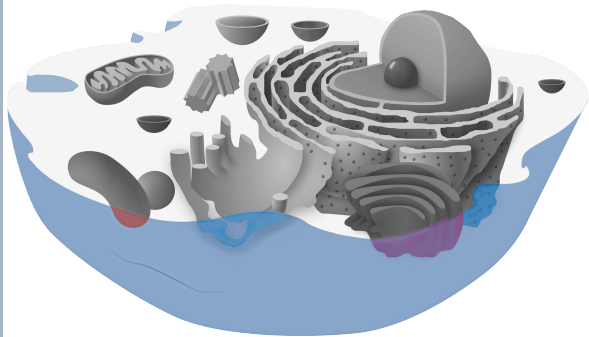
vacuolo



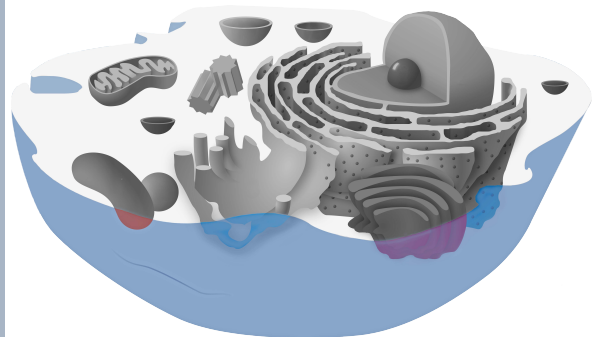
centrioli



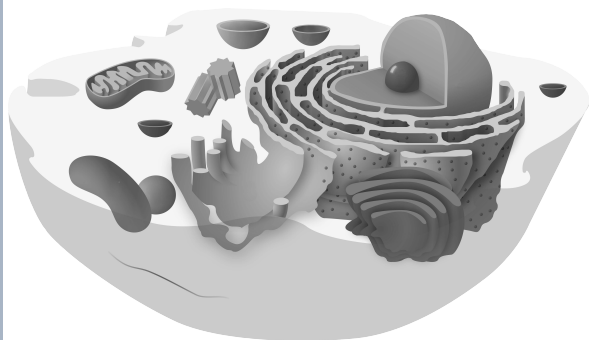
centrioli



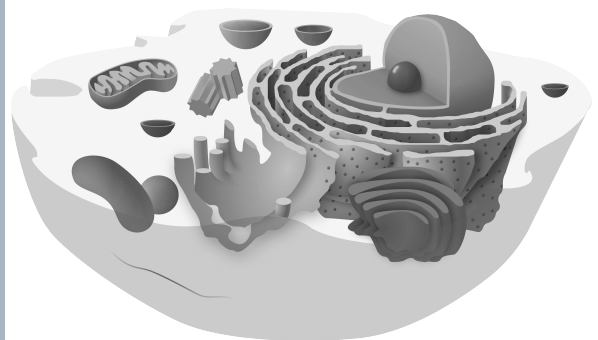
membrana cellulare



membrana cellulare



cellula animale
bianco/nero



cellula animale
bianco/nero

Quellen

[Kelvinsong](#), [Animal Cell](#), Beschriftung entfernt, , [CC0 1.0](#)

[Kelvinsong](#), [Animal Cell](#), Beschriftung entfernt, Zelle schwarz/weiß eingefärbt, einzelne Teile der Zelle farbig darauf gelegt, [CC0 1.0](#)

[Kelvinsong](#), [Animal Cell](#), Beschriftung entfernt, Zelle schwarz/weiß eingefärbt, [CC0 1.0](#)