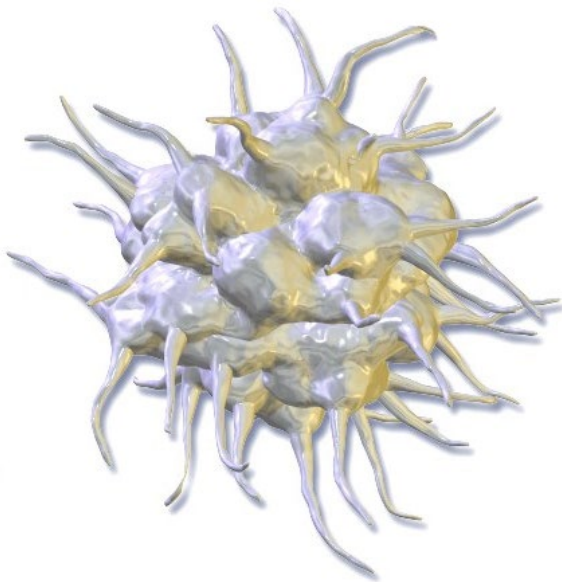




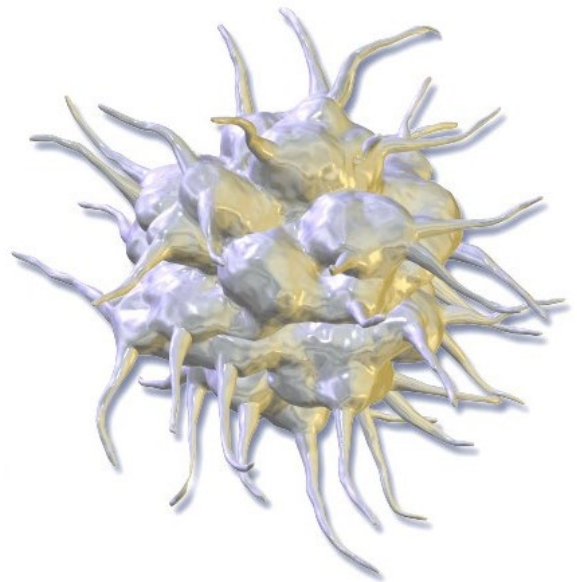
érythrocyte



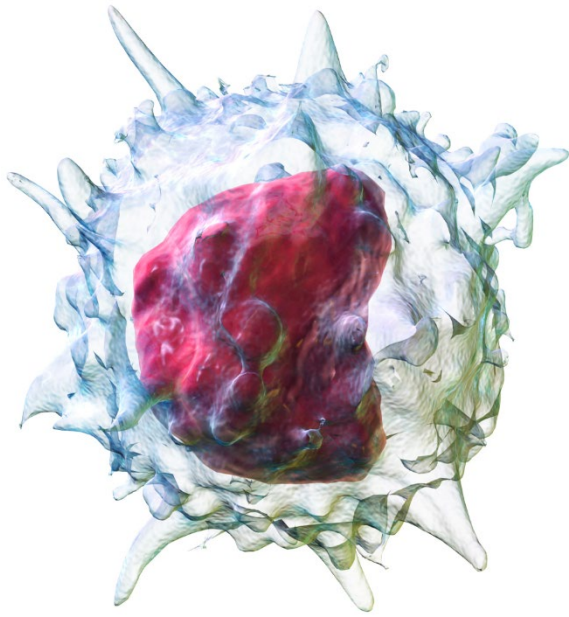
érythrocyte



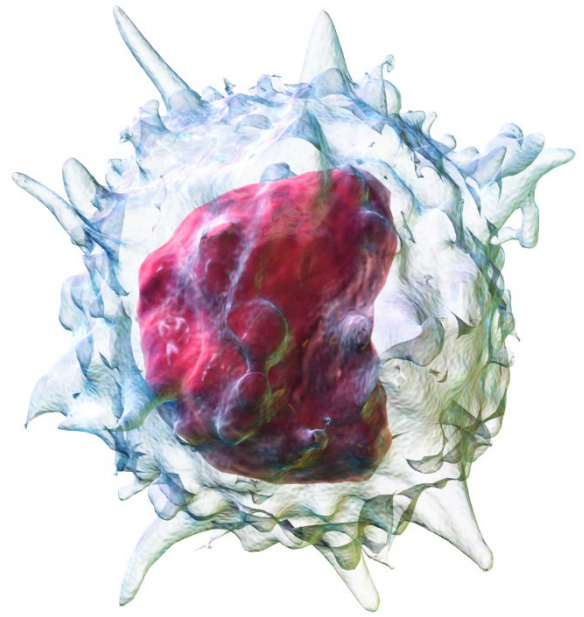
plaquette



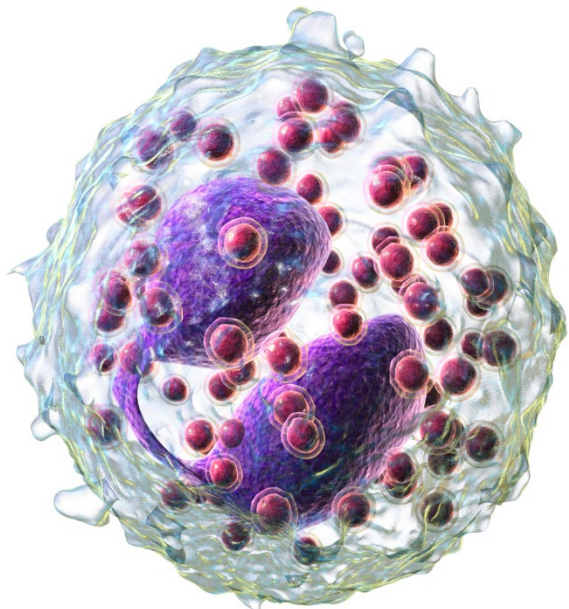
plaquette



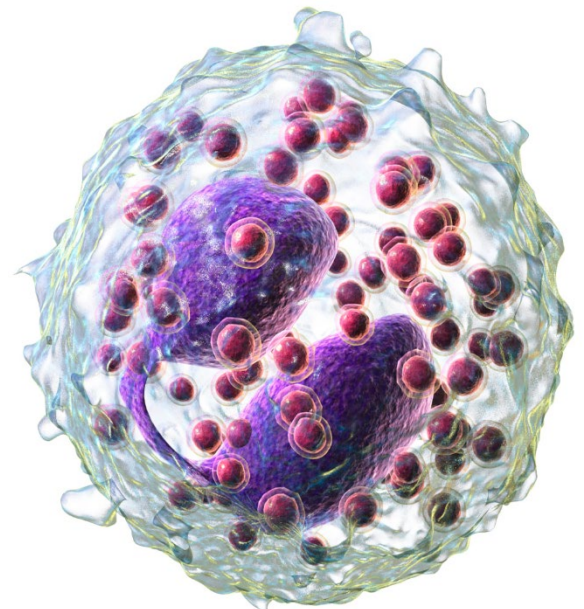
monocyte



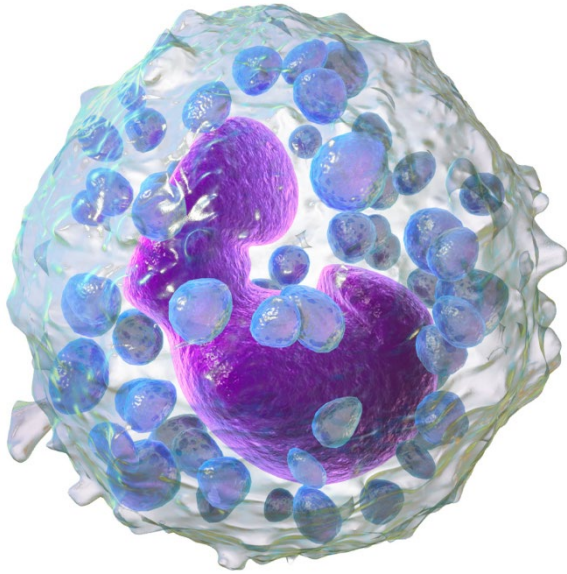
monocyte



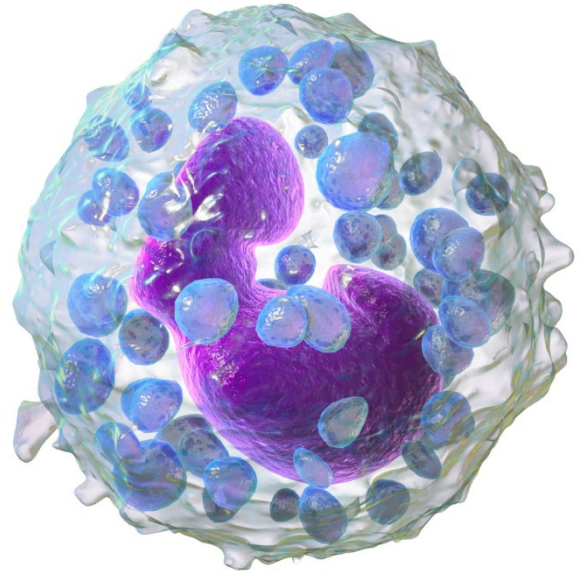
granulocyte  
éosinophile



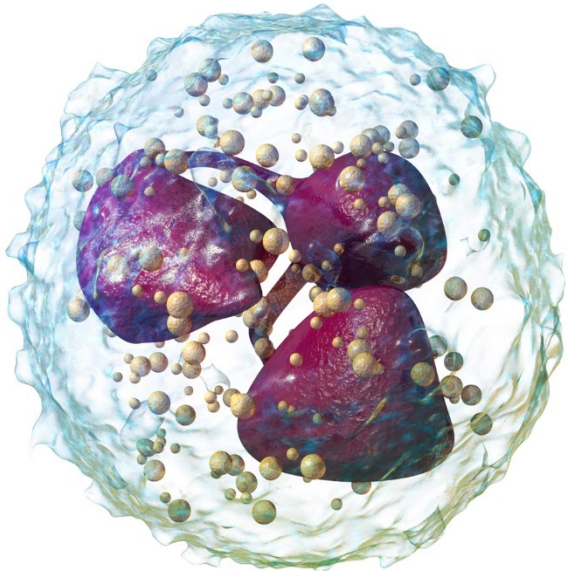
granulocyte  
éosinophile



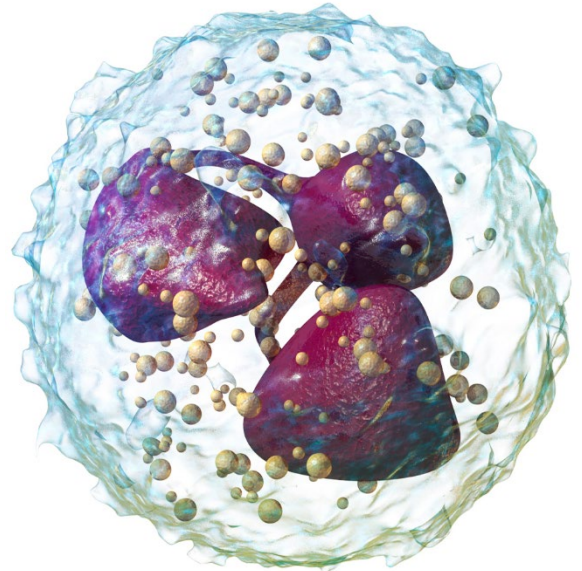
granulocyte basophile



granulocyte basophile

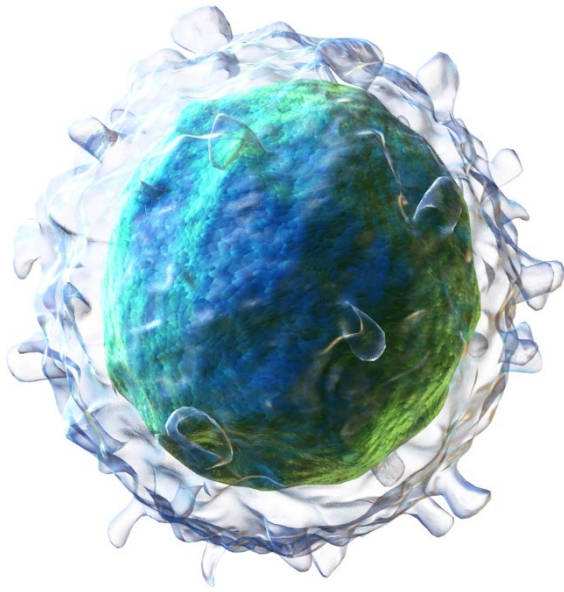


granulocyte  
neutrophile

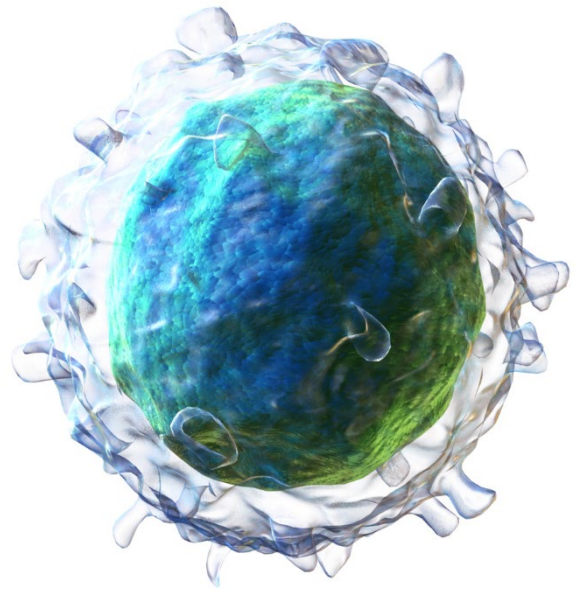


granulocyte  
neutrophile

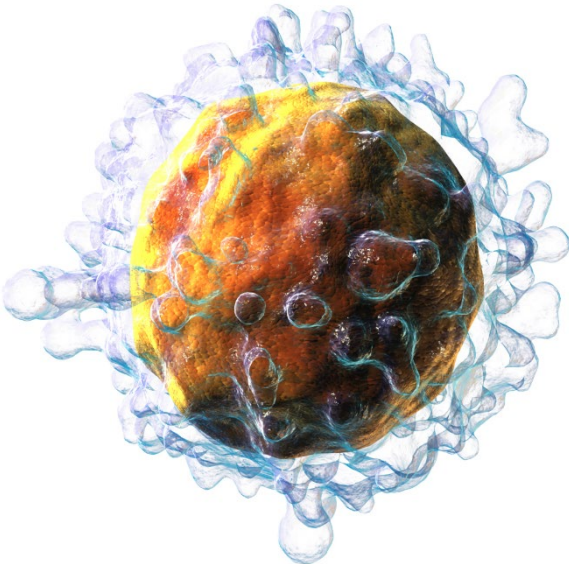




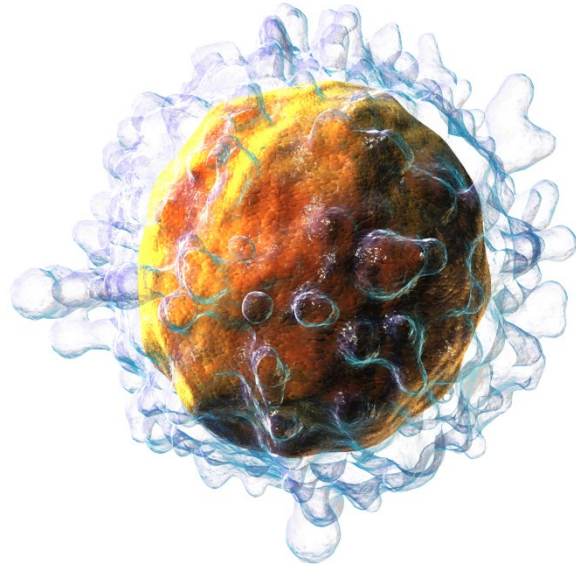
lymphocyte B



lymphocyte B



lymphocyte T



lymphocyte T

## Quellen

[Rogeriopfm](#), [Red blood cell on glass](#), Hintergrund entfernt, Sättigung verstärkt, [CC BY-SA 3.0](#)

[BruceBlaus](#). When using this image in external sources it can be cited as: Blausen.com staff (2014). "[Medical gallery of Blausen Medical 2014](#)". WikiJournal of Medicine 1 (2). DOI:[10.15347/wjm/2014.010](#). ISSN [2002-4436](#)., [Blausen 0740 Platelets](#), Bild zugeschnitten, [CC BY 3.0](#)

Blausen Medical, [Blausen 0649 Monocyte \(crop\)](#), Bild zugeschnitten, [CC BY-SA 4.0](#)

Blausen Medical, [Blausen 0352 Eosinophil \(crop\)](#), Bild zugeschnitten, [CC BY-SA 4.0](#)

Blausen Medical, [Blausen 0077 Basophil \(crop\)](#), Bild zugeschnitten, [CC BY-SA 4.0](#)

Blausen Medical, [Blausen 0676 Neutrophil \(crop\)](#), Bild zugeschnitten, [CC BY-SA 4.0](#)

Blausen Medical, [Blausen 0624 Lymphocyte B cell \(crop\)](#), Bild zugeschnitten, [CC BY-SA 4.0](#)

Blausen Medical, [Blausen 0625 Lymphocyte T cell \(crop\)](#), Bild zugeschnitten, [CC BY 3.0](#)